

MODULAR THROTTLE AND CHECK VALVE MT-04 SERIES

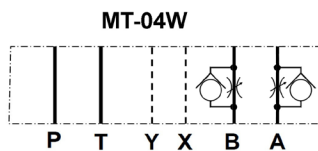


FEATURES

- The modular adjustable flow control valve functions as a needle valve flow restrictor in one direction in a branch of a circuit, with free flow in the opposite direction. It operates on the A & B ports in the “meter-out” configuration. Adjustment is made with a calibrated knob, standard with the valve.

As a modular valve, this valve mounts between an NFPA D07 size directional control valve and the sub-plate. A longer than standard bolt kit is required when mounting modular valves in a stack. Refer to bolt kits.

Symbol



Model Code

MT - 04 W - K - **

1 2 3 4 5

1 **Series**
MT: Modular Throttle and
Check Valve (Flow Control)

2 **Mounting Style**
04: NFPA Size D07

3 **Function Port**
W: A & B Ports

4 **Adjustment Style**
K: Adjusting Knob

5 **Design Number**

MODULAR THROTTLE AND CHECK VALVE

MT-04 SERIES

SPECIFICATIONS

MAX. OPERATING PRESSURE	250 BAR (3675 PSI)
MAX. FLOW CAPACITY	190 LPM (50 GPM)

DIMENSIONS

