

## MODULAR THROTTLE AND CHECK VALVE MT-06 SERIES

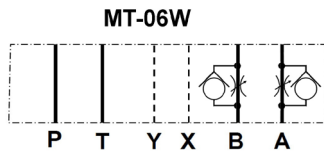


### FEATURES

- The modular adjustable flow control valve functions as a needle valve flow restrictor in one direction in a branch of a circuit, with free flow in the opposite direction. It operates on the A & B ports in the “meter-out” configuration. Adjustment is made with a calibrated knob, standard with the valve.

As a modular valve, this valve mounts between an NFPA D08 size directional control valve and the subplate. A longer than standard bolt kit is required when mounting modular valves in a stack. Refer to bolt kits.

### Symbol



### Model Code

**MT – 06 W – K – \*\***

1 2 3 4 5

1 **Series**

**MT:** Modular Throttle and Check Valve (Flow Control)

2 **Mounting Style**

**06:** NFPA Size D08

3 **Function Port**

**W:** A & B Ports

4 **Adjustment Style**

**K:** Adjusting Knob

5 **Design Number**

Note: Inquire for availability of other port and function options.

# MODULAR THROTTLE AND CHECK VALVE

## MT-06 SERIES

### SPECIFICATIONS

MAX. OPERATING PRESSURE	250 BAR (3675 PSI)
MAX. FLOW CAPACITY	300 LPM (79 GPM)

### DIMENSIONS

#### ● MT-06W-K

in (mm)

