

Technical Information

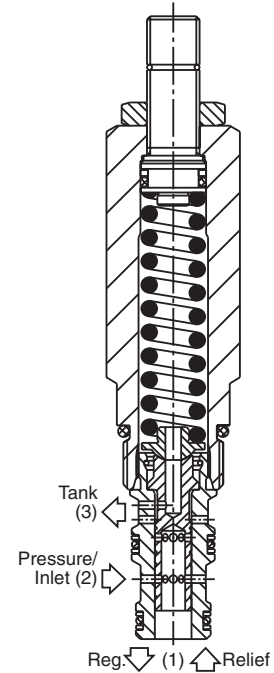
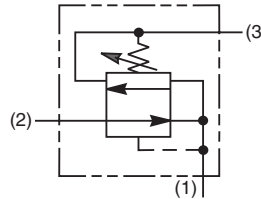
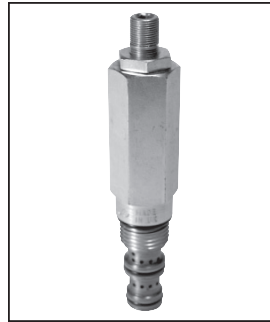
- CV** Check Valves
- SH** Shuttle Valves
- LM** Load/Motor Controls
- FC** Flow Controls
- PC** Pressure Controls
- LE** Logic Elements
- DC** Directional Controls
- MV** Manual Valves
- SV** Solenoid Valves
- PV** Proportional Valves
- CE** Coils & Electronics
- BC** Bodies & Cavities
- TD** Technical Data

General Description

Direct Acting Pressure Reducing/Relieving Valve. For additional information see Technical Tips on pages PC1-PC6.

Features

- Maximum pressure setting up to 150 Bar, 2175 PSI
- Three pressure ranges available for more accurate pressure control
- Partial reverse flow capability
- Hardened working parts for maximum durability
- Adjustable and tamperproof versions available
- All external parts zinc plated



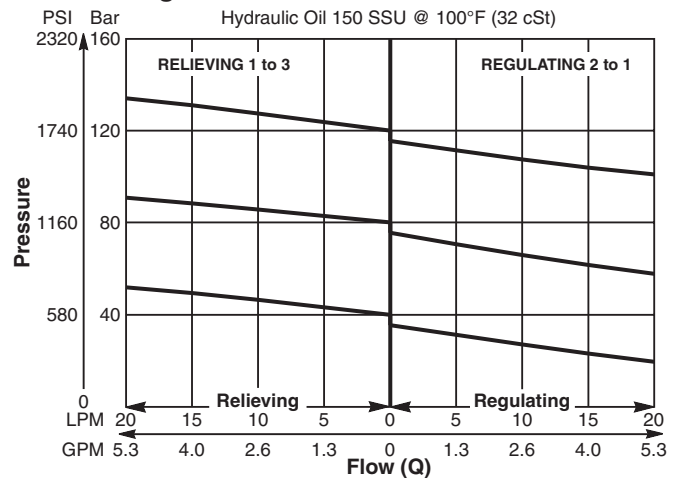
Specifications

| | |
|---------------------------------------|---|
| Rated Flow | 20 LPM (5 GPM) |
| Maximum Inlet Pressure | 420 Bar (6000 PSI) |
| Maximum Pressure Setting | C - 5-40 Bar (73-580 PSI) E - 25-75 Bar (363-1088 PSI) G - 50-150 Bar (725-2175 PSI) |
| Maximum Tank Pressure | 420 Bar (6000 PSI) |
| Cartridge Material | All parts steel. All operating parts hardened steel. |
| Operating Temp. Range/Seals | -40°C to +93.3°C (Nitrile) (-40°F to +200°F) -31.7°C to +121.1°C (Fluorocarbon) (-25°F to +250°F) |
| Fluid Compatibility/ Viscosity | Mineral-based or synthetic with lubricating properties at viscosities of 45 to 2000 SSU (6 to 420 cSt) |
| Filtration | ISO Code 16/13, SAE Class 4 or better |
| Approx. Weight | 0.20 kg (0.44 lbs.) |
| Cavity | C08-3 (See BC Section for more details) |
| Form Tool | Rougher NFT08-3R Finisher NFT08-3F |

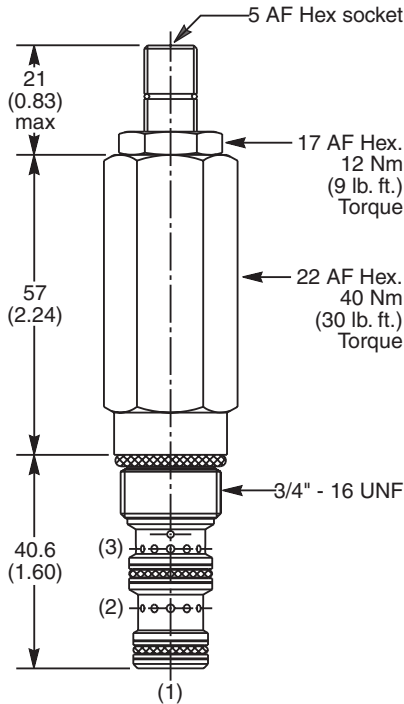
Performance Curve

(Pressure rise through cartridge only)

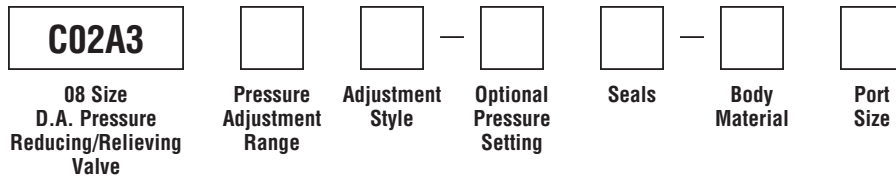
Flow vs. Regulated Pressure



Dimensions Millimeters (Inches)



Ordering Information



| Code | Pressure Adjustment Range |
|------|-------------------------------|
| C | 5 - 40 Bar (73 - 580 PSI) |
| E | 25 - 75 Bar (363 - 1088 PSI) |
| G | 50 - 150 Bar (725 - 2175 PSI) |

| Code | Seals / Kit No. |
|------|---------------------------------------|
| N | Nitrile, Buna-N (Std.) / (SK30501N-1) |
| V | Fluorocarbon / (SK30501V-1) |

| Code | Body Material |
|------|---------------|
| Omit | Steel |
| A | Aluminum |

| Code | Adjustment Style / Kit No. |
|------|-------------------------------|
| Z | Screw Adjust (Std.) |
| W | Knob Adjust |
| T | Tamper Resistant Cap (TC1130) |

| Code | Port Size | Body Part No. |
|------|----------------|---------------|
| Omit | Cartridge Only | |
| 4P | 1/4" NPTF | (B08-3-*4P) |
| 4T | SAE-4 | (B08-3-*4T) |
| 6T | SAE-6 | (B08-3-*6T) |
| 6B | 3/8" BSPG | (B08-3-*6B) |

* Add "A" for aluminum, omit for steel.

| Optional Pressure Setting | |
|-----------------------------------|-------------------------------------|
| Specify setting if required (Bar) | |
| C02A3C | Standard Setting: 20 Bar (290 PSI) |
| C02A3E | Standard Setting: 38 Bar (551 PSI) |
| C02A3G | Standard Setting: 75 Bar (1088 PSI) |

- CV** Check Valves
- SH** Shuttle Valves
- LM** Load/Motor Controls
- FC** Flow Controls
- PC** Pressure Controls
- LE** Logic Elements
- DC** Directional Controls
- MV** Manual Valves
- SV** Solenoid Valves
- PV** Proportional Valves
- CE** Coils & Electronics
- BC** Bodies & Cavities
- TD** Technical Data