

CV

Check
Valves

SH

Shuttle
Valves

LM

Load/Motor
Controls

FC

Flow
Controls

PC

Pressure
Controls

LE

Logic
Elements

DC

Directional
Controls

MV

Manual
Valves

SV

Solenoid
Valves

PV

Proportional
Valves

CE

Coils &
Electronics

BC

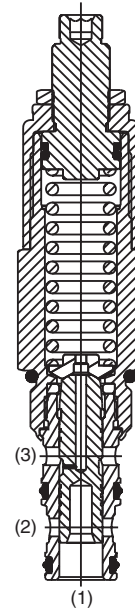
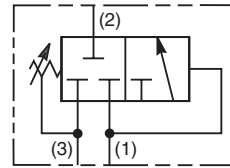
Bodies &
Cavities

TD

Technical
Data

General Description

Direct Acting Sequence Valve (Internally Piloted, Externally Drained). In the steady state condition, all three ports are blocked with the spring chamber drained to port 3. When the pressure at port 1 exceeds the valve setting, the spool moves allowing flow from the nose of the cartridge (port 1) to the actuator port (port 2). By externally draining the spring chamber directly to tank (port 3), the valve is insensitive to back pressure at the sequence port.



Features

- Hardened, precision ground parts for durability
- Internal mechanical stop limits spool travel eliminating spring solidification
- "D"-Ring eliminates backup rings
- All external parts have yellow zinc dichromate. This coating is ideal for salt spray applications.
- Fast response

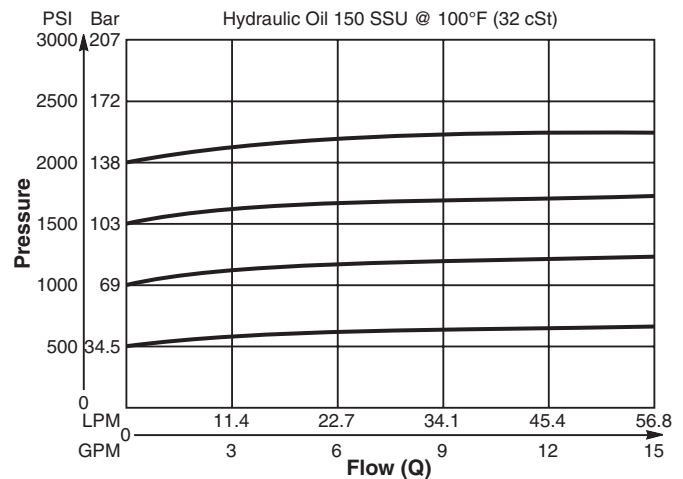
Specifications

| | |
|--------------------------------------|--|
| Flow Rate | 56 LPM (15 GPM) |
| Maximum Inlet Pressure | 250 Bar (3600 PSI) |
| Maximum Pressure Setting | 138 Bar (2000 PSI) |
| Leakage at 150 SSU (32 cSt) | 82 cc/min. (5 cu. in./min.) at 210 Bar (3000 PSI) |
| Cartridge Material | All parts steel. All operating parts hardened steel. |
| Operating Temp. Range/Seals | -45°C to +93.3°C ("D"-Ring) (-50°F to +200°F) -31.7°C to +121.1°C (Fluorocarbon) (-25°F to +250°F) |
| Fluid Compatibility/Viscosity | Mineral-based or synthetic with lubricating properties at viscosities of 45 to 2000 SSU (6 to 420 cSt) |
| Filtration | ISO Code 16/13, SAE Class 4 or better |
| Approx. Weight | .45 kg (1.0 lbs.) |
| Cavity | C10-3 |
| Form Tool | Rougher NFT10-3R Finisher NFT10-3F |

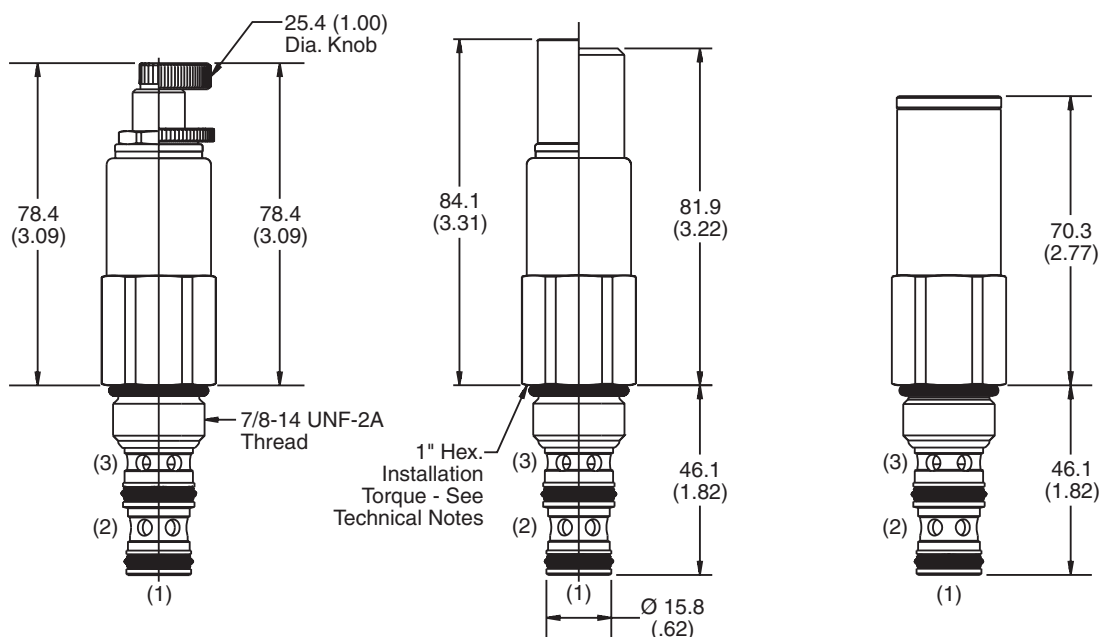
Performance Curve

Flow vs. Inlet Pressure

(Pressure rise through cartridge only)



Dimensions Millimeters (Inches)



Screw/Knob Version

Fixed Cap/Tamper Resistant Version

Non-Adjustable Version

Ordering Information

SV103

10 Size
D.A. Sequence Valve
(Internal Pilot)

Adjustment
Style

Pressure
Range

Seals

Optional
Pressure
Setting

Body
Material

Port
Size

| Code | Adjustment Style / Kit No. |
|------|---------------------------------|
| F | Fixed style, covered adjustment |
| K | Knob Adjust (717784-10) |
| N | Non-Adjustable |
| S | Screw Adjust |
| T | Tamper Resistant Cap (717943) |

| Code | Seals / Kit No. |
|------|--------------------------|
| Omit | "D"-Ring / (SK10-3) |
| N | Nitrile / (SK10-3N) |
| V | Fluorocarbon / (SK10-3V) |

| Code | Body Material |
|------|---------------|
| Omit | Steel |
| A | Aluminum |

| Code | Pressure Range |
|------|--|
| 02 | 5.1 - 14 Bar (75 - 200 PSI) Standard Setting: 6.9 Bar (100 PSI) @ crack pressure, approximately .95 LPM (.25 GPM) |
| 06 | 6.9 - 42 Bar (100 - 600 PSI) Standard Setting: 21 Bar (300 PSI) @ crack pressure, approximately .95 LPM (.25 GPM) |
| 12 | 14 - 83 Bar (200 - 1200 PSI) Standard Setting: 42 Bar (600 PSI) @ crack pressure, approximately .95 LPM (.25 GPM) |
| 20 | 28 - 138 Bar (400 - 2000 PSI) Standard Setting: 69 Bar (1000 PSI) @ crack pressure, approximately .95 LPM (.25 GPM) |

| Optional Pressure Setting |
|---|
| Pressure ÷ 10 i.e. 150 = 1500 PSI (Omit if standard setting is used) Setting Range: 100 to 2000 PSI All settings at crack pressure, approximately .95 LPM (.25 GPM) |

| Code | Port Size | Body Part No. |
|------|----------------|---------------|
| Omit | Cartridge Only | |
| 4P | 1/4" NPTF | (B10-3-*4P) |
| 6P | 3/8" NPTF | (B10-3-*6P) |
| 8P | 1/2" NPTF | (B10-3-*8P) |
| 6T | SAE-6 | (B10-3-*6T) |
| 8T | SAE-8 | (B10-3-*8T) |
| 6B | 3/8" BSPG | (B10-3-6B)† |
| 8B | 1/2" BSPG | (B10-3-*8B) |

* Add "A" for aluminum, omit for steel..
† Steel body only.