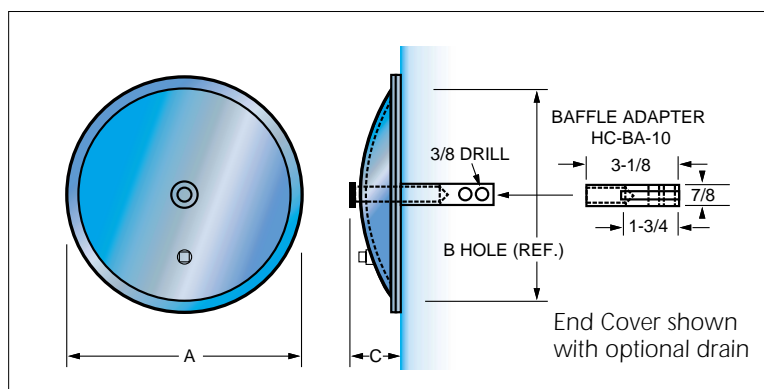


End Covers

Hydro-Craft® end covers for replacement or retrofit are available in 12-, 14-, and 18-inch diameters. Available in steel and stainless steel. Steel end covers are zinc plated for corrosion protection. All end covers are available with optional drain. All have a unique formed on Buna-N lip seal which has excellent resistance to cutting and abrasion, and is compatible with all standard hydraulic fluids. Replacement seals, if required, are readily available.

The end cover is attached to the reservoir by the unique Hydro-Craft baffle adapter. The design of the HC-BA-10 allows it to be attached to the baffle with press pins or standard bolts, assuring a tight, shockproof installation, and eliminating the need for welding and subsequent weld splatter, warping and stressing of the baffle. The Hydro-Craft baffle adapter is also available in 304 stainless steel.



SPECIFICATIONS

PART NO.	A	B	C	MATERIAL	WEIGHT
HC-EC-12	11-7/8	10	1-5/8	7 GA	6-1/4
HC-EC-14	14	12	2	7 GA	8
HC-EC-18	18	16	2-5/8	7 GA	14-1/2
HC-EC-12SS	12	10	1-5/8	12 GA	4
HC-EC-14SS	14-5/8	12	2-1/8	7 GA	9-3/4
HC-EC-18SS	18	16	2-5/8	.194	8

NOTE: Add E or V to End Cover part number for EP Seal or Viton.
Add D at end of part number for drain.
The Buna-N Lip Seal is the standard seal used on end covers.

END COVER REPLACEMENT SEALS

PART NO.	DESCRIPTION	COVER SIZE
HC-LIP-S-12-E	EP Seal Kit	12
HC-LIP-S-14-E	EP Seal Kit	14
HC-LIP-S-18-E	EP Seal Kit	18
HC-LIP-S-12	Buna-N Lip Seal	12
HC-LIP-S-14	Buna-N Lip Seal	14
HC-LIP-S-18	Buna-N Lip Seal	18
HC-LIP-S-12-V	Viton Lip Seal	12
HC-LIP-S-14-V	Viton Lip Seal	14
HC-LIP-S-18-V	Viton Lip Seal	18

SELF ALIGNING COVER BAR

The Hydro-Craft self aligning cover bar is available for 12- and 14-inch end covers. Installed by placing a bolt through the end cover and turning a few threads into the cover bar, it can then be angled through the reservoir access hole. Allowing the cover bar to rest on the bottom of the reservoir, it will automatically align itself to the proper height to be torqued firmly into place. This durable self aligning cover bar is fabricated from 3/8-inch hot rolled, pickled and oiled steel plate. More than ample torque can be applied to insure a perfect seal on the reservoir end cover.

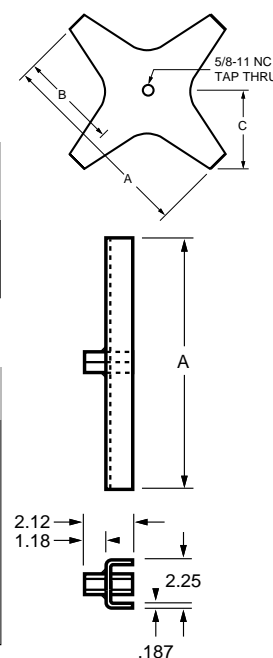
SPECIFICATIONS

PART NO.	END COVER	HOLE HOLE DIA.	DIMENSIONS		
			A	B	C
HC-X-BAR-12	12	10	12	6	4-3/8
HC-X-BAR-14	14	12	14-1/4	7-1/8	5-3/8

OPTIONS

PART NO.	DESCRIPTION
HC-BA-10*	Baffle Adapter
HC-BA-P*	Baffle Adapter Pin
HC-EC-CW	Crush Washer
HC-EC-CB.*	End Cover Bolt
	DIMENSION A
HC-C-BAR-12	12
HC-C-BAR-14	14
HC-C-BAR-18	18

* Available in stainless steel



S.A.E. Adapters

3/8 INCH TO 2 INCH

Hydro-Craft® S.A.E. Weld Boss Flanges and Weld Couplings are precision manufactured from 12L14 Leadloy steel. They will save time and labor when mounting S.A.E. components. Used as a downline coupling, they eliminate the need for expensive straight-thread downlines...simply attach the S.A.E. component to the topside, and thread an inexpensive pipe nipple to the NPT side in the reservoir. Adapters are shipped unplated but oiled to prevent corrosion.



**WELD COUPLING FEMALE
S.A.E. TO FEMALE N.P.T.**



WELD BOSS FEMALE S.A.E.



FEMALE S.A.E. TO N.P.T.

PART NO.	FEMALE PIPE	FEMALE S.A.E.	L ±.03	D DIA.	PSI
WCF-6-6	3/8	9/16-18	1.41	7/8	4000
WCF-8-8	1/2	3/4-16	1.72	1-1/8	3000
WCF-12-12	3/4	1-1/16-12	1.98	1-3/8	2500
WCF-16-16	1	1-5/16-12	2.17	1-5/8	2000
WCF-20-20	1-1/4	1-5/8-12	2.25	2-1/8	1150
WCF-24-24	1-1/2	1-7/8-12	2.26	2-1/2	1000
WCF-32-32	2	2-1/2-12	2.41	3	1000

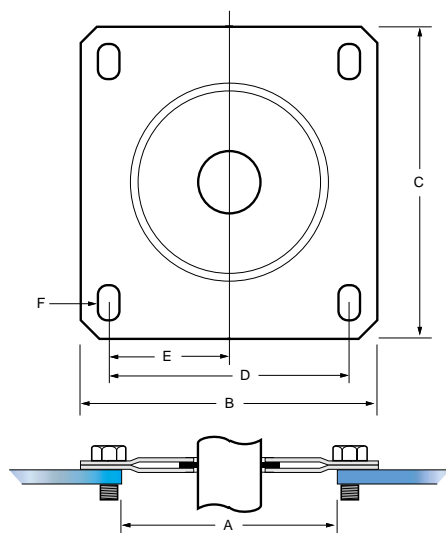
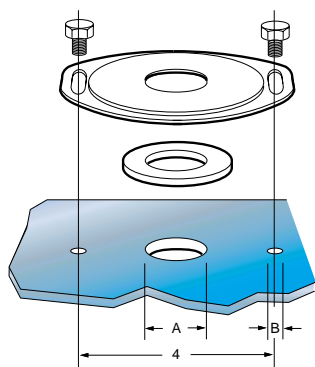
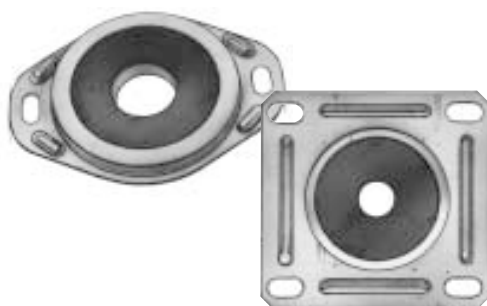
Add "SS" to the end of part number for 316 stainless steel adapters.



FEMALE S.A.E. BOSS

PART NO.	FEMALE S.A.E.	L ±.03	D DIA.	INSTALLATION HOLE SIZE	PSI
WBF-6	9/16-18	.70	.87	.625	5000
WBF-8	3/4-16	.85	1.1	.875	4500
WBF-10	7/8-14	.96	1.375	1.0	3500
WBF-12	1-1/16-12	.96	1.375	1.0	3500
WBF-14	1-3/16-12	1.1	1.6	1.25	3000
WBF-16	1-5/16-12	1.1	1.6	1.375	3000
WBF-20	1-5/8-12	1.1	2.1	1.75	2500
WBF-24	1-7/8-12	1.1	2.5	2.0	2000
WBF-32	2-1/2-12	1.2	3.0	2.5	1500

Add "SS" to the end of part number for 316 stainless steel adapters.
SAE to SAE or custom adapters are available, contact Hydro-Craft.



Flange Kits

Hydro-Craft® flange kits are available for either tube or pipe, Suction Line or Return Line. The Return Line kit consists of: 2 bolts, 1 rubber gasket, 1 metal flange. The Suction Line kit consists of: 4 bolts, 1 cardboard gasket, 1 rubber gasket, and the top and bottom metal flanges. (Only the top plate is ribbed.)

SPECIFICATIONS-RETURN LINE

PART NO.	TUBE or PIPE SIZE	DIA. A	DIA. B
HA-00-28-8	1/2	1	7/32
HA-00-28-12	3/4	1-1/4	7/32
HA-00-28-16	1	1-1/2	7/32
HA-00-28-20	1-1/4	1-3/4	7/32
HA-00-28-24	1-1/2	2	7/32
HA-00-28-32	2	2-1/2	7/32

NOTE: Add "T" to the end of the part number to indicate tube kit or "P" to indicate pipe kit.

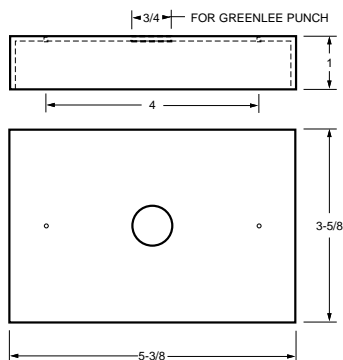
SPECIFICATIONS-SUCTION LINE

PART NO.	TUBE or PIPE SIZE	A	B	C	D	E	F
HA-00-40-6*	3/8	4.00	5.25	5.50	4.250	2.125	.38 x .62
HA-00-40-8	1/2	4.00	5.25	5.50	4.250	2.125	.38 x .62
HA-00-40-10*	5/8	4.00	5.25	5.50	4.250	2.125	.38 x .62
HA-00-40-12	3/4	4.00	5.25	5.50	4.250	2.125	.38 x .62
HA-00-40-16	1	4.00	5.25	5.50	4.250	2.125	.38 x .62
HA-00-40-20	1-1/4	4.00	5.25	5.50	4.250	2.125	.38 x .62
HA-00-40-24	1-1/2	4.00	5.25	5.50	4.250	2.125	.38 x .62
HA-00-40-32	2	4.00	5.25	5.50	4.250	2.125	.38 x .62
HA-00-60-24**	1-1/2	6.62	7.50	7.50	6.250	3.125	.44 x .88
HA-00-60-32**	2	6.62	7.50	7.50	6.250	3.125	.44 x .88
HA-00-60-40**	2-1/2	6.62	7.50	7.50	6.250	3.125	.44 x .88
HA-00-60-48**	3	6.62	7.50	7.50	6.250	3.125	.44 x .88

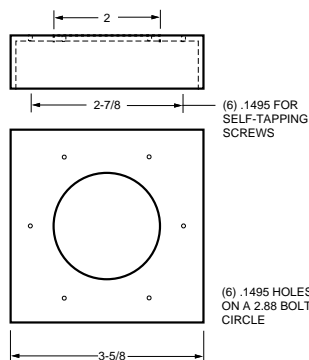
NOTE: Add "T" to the end of the part number to indicate tube kit or "P" to indicate pipe kit.

* Available in tube only. **Available in pipe only.

WR-28 RETURN LINE FLANGE WELD RISER



WR-120 FILLER BREATHER WELD RISER



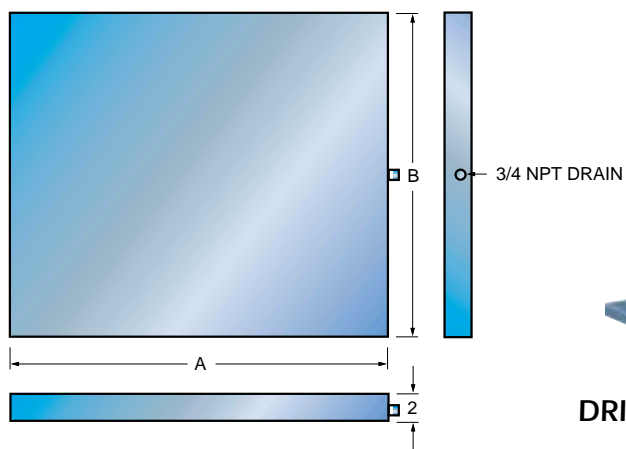
Weld Risers

FILLER BREATHER & RETURN LINE WELD RISERS

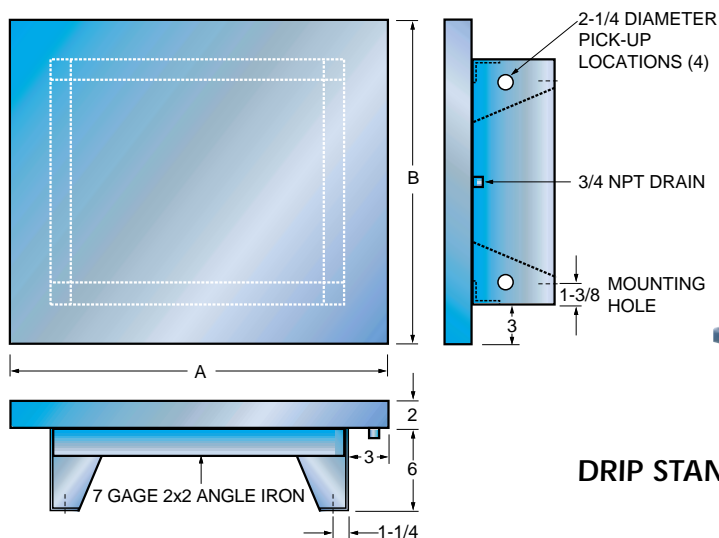
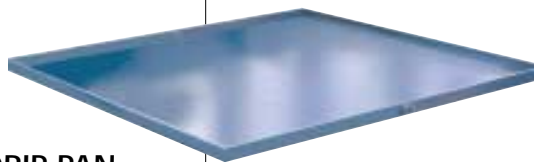
Hydro-Craft risers are designed to raise fillers and return line openings 1" above the surface of the tank top. This low-cost riser eliminates costly repairs brought on by contamination being swept into the reservoir. The filler riser fits most Hydro-Craft fillers and filler breathers. The return riser fits all Hydro-Craft return line flange kits.

NOTE: Also available in stainless steel.

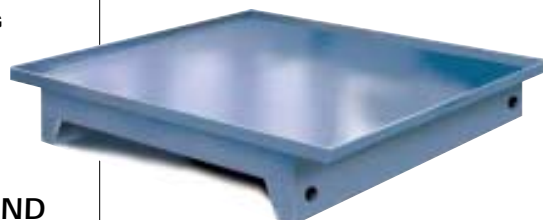
Containment Trays — Drip Pans and Stands



DRIP PAN



DRIP STAND



DRIP PANS AND STANDS

DRIP PAN	WC-DP-10	WC-DP-15	WC-DP-20	WC-DP-30 WC-DP-40 WC-DP-50	WC-DP-60	WC-DP-80 WC-DP-100	WC-DP-120 WC-DP-150	WC-DP-200 WC-DP-250 WC-DP-300
DRIP STAND	WC-DS-10	WC-DS-15	WC-DS-20	WC-DS-30 WC-DS-40 WC-DS-50	WC-DS-60	WC-DS-80 WC-DS-100	WC-DS-120 WC-DS-150	WC-DS-200 WC-DS-250 WC-DS-300
A (LENGTH)	28	32	36	42	54	66	66	78
B (WIDTH)	24	24	24	30	33	33	36	42

DRIP PAN	HL-DP-10	HL-DP-18	HL-DP-30	HL-DP-45	HL-DP-60	HL-DP-80	HL-DP-100	HL-DP-120 HL-DP-150 HL-DP-200
DRIP STAND	HL-DS-10	HL-DS-18	HL-DS-30	HL-DS-45	HL-DS-60	HL-DS-80	HL-DS-100	HL-DS-120 HL-DS-150 HL-DS-200
A (LENGTH)	30	36	42	46	54	72	66	78
B (WIDTH)	31	36	36	36	42	42	54	54

All dimensions are approximate in inches