

RESERVOIRS W/INTEGRATED SKIDS

STYLE C, L-SHAPED

The Style C, L-Shaped Series provide users with a vertical reservoir and an adjacent platform for mounting system components. The reservoir cover is hinged for convenient access to the inside of the reservoir. The reservoir and platform are fully supported by and welded to a skid allowing for most system assembly to be completed remotely and then transported to another location for drop in installation.

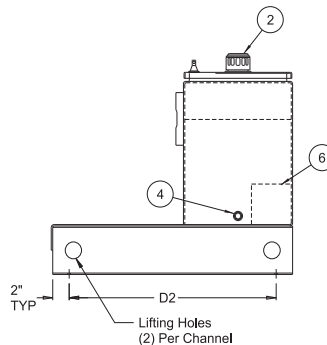
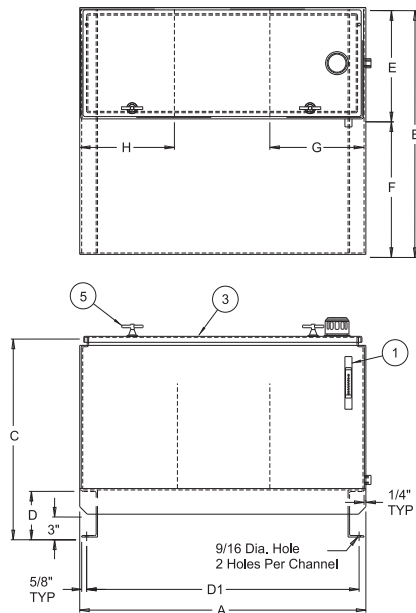
Standard Features:

- (1) 5 inch G1620 Series sight gage on capacities of less than 300 gallons; (1) 10 inch G1615 Series sight gage on 300 gallon capacities and above
- (1) 5201 Filler Breather
- (1) Hinged Cover with gasket
- (1) 3/4 inch NPT drain with plug
- (2) T-Handles, (3) for 200 gallon and up
- Baffle(s) with cutout for circulation
- Exterior painted with a LDI gray primer
- Interior coated with rust preventative oil
- 100 gallon and 120 gallon include (1) door chain (not shown)
- Materials
 - Carbon steel reservoir
 - Buna N seals
 - Aluminum sight gage
 - Zinc plated fill cap with nylon strainer basket

CAUTION:

- Reservoirs are not designed for internal positive or negative pressure applications. For these applications, consult the factory.

- NOTE**
- Drain plugs need to be sealed and tightened before use
 - Sight gage, filler breather and T-handles shipped loose inside reservoir
 - Industry accepted design practice for hydraulic systems limits maximum operating temperature to 180° F (82° C), but materials used for fabrication of the reservoirs are capable of operating between -40° and 250° F (-40° and 121° C)



NOTE: All dimensions are inches

Tank Dimensions (inches)												
Capacity (gal)	Part No.	A	B	C	D	E	F	G	H	Mounting Centers		Piece Weight (lbs)
										D1 ± .12	D2 ± .12	
10	VL-10	24.00	23.38	23.88	6.00	11.12	12.25	11.00	N/A	22.25	19.00	129
20	VL-20	30.00	27.38	25.88	6.00	13.50	13.88	12.00	N/A	28.25	23.00	180
30	VL-30	36.00	30.38	29.88	6.00	13.75	16.62	12.00	N/A	34.25	26.00	231
45	VL-45	54.00	31.38	29.88	6.00	13.75	17.62	12.00	12.00	52.25	27.00	335
60	VL-60	48.00	37.38	35.75	6.00	16.75	20.62	16.00	N/A	46.25	33.00	362
80	VL-80	66.00	38.56	35.94	6.00	16.38	22.00	16.00	16.00	64.25	34.00	670
100	VL-100	60.00	42.56	38.94	6.00	19.38	23.00	16.00	N/A	58.25	38.00	715
120	VL-120	72.00	42.56	39.06	6.00	19.38	23.00	16.00	16.00	70.25	38.00	836
150	VL-150	72.00	50.56	39.06	6.00	25.38	25.00	16.00	N/A	70.25	46.00	939
200	VL-200	84.00	51.56	42.06	6.00	25.38	26.00	16.00	16.00	82.25	47.00	1128
300	VL-300	84.00	60.00	54.19	6.00	25.38	34.44	16.00	16.00	82.25	55.50	1400
400	VL-400	84.00	60.00	54.19	6.00	28.38	31.44	16.00	16.00	82.25	55.50	1610
500	VL-500	84.00	60.00	60.19	6.00	32.38	27.44	18.00	18.00	82.25	55.50	1782
600	VL-600	90.00	62.00	66.19	6.00	30.38	31.44	22.00	22.00	88.25	57.50	1838

Dimensions and specifications are subject to change without notice. Not all items are Made-To-Stock, contact us for availability.

04/15

Ph : 920-682-6877
Fx : 920-684-7210



sales@ldi-industries.com
www.ldi-industries.com