

# RESERVOIRS W/INTEGRATED SKIDS

## STYLE D, CUSTOM L-SHAPED

The Style D, L-Shaped Series provide users with a vertical reservoir and an adjacent platform for mounting system components. The reservoir cover is hinged for convenient access to the inside of the reservoir. The reservoir and platform are fully supported by and welded to a skid allowing for most system assembly to be completed remotely and then transported to another location for drop in installation.

### Standard Features:

- (1) 5 inch G1620 Series sight gage
- (1) Riser with 5201 Filler Breather
  - Bayonet style - 40 micron
- Baffle with cutout for circulation
- (1) 3/4 inch NPT drain with plug
- (1) Return connection
- Channel gasket installed on reservoirs with bolt-on top
- Exterior painted with a LDI gray primer
- Interior coated with rust preventative oil

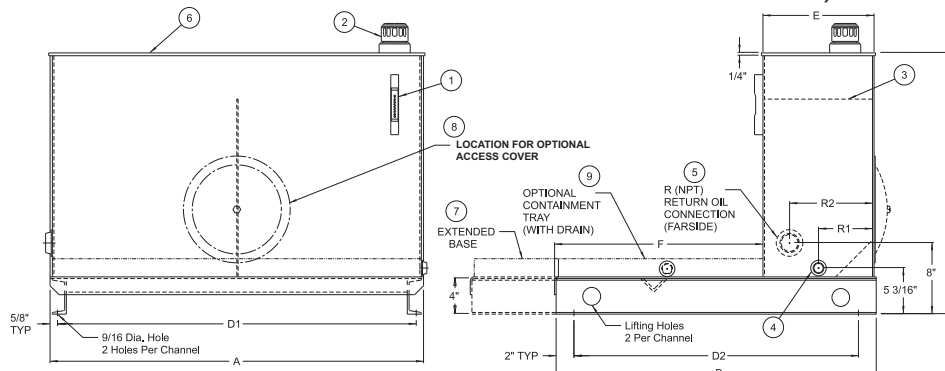
### 9. Materials

- Carbon steel reservoir
- Buna N seals
- Aluminum sight gage
- Zinc plated fill cap with nylon strainer basket

- NOTE**
- Drain plugs need to be sealed and tightened before use
  - Sight gage and filler breather shipped loose inside reservoir
  - Channel gasket installed on reservoirs with bolt-on top
  - Mounting hardware is supplied with bolt-on tops
  - Industry accepted design practice for hydraulic systems limits maximum operating temperature to 180° F (82° C), but materials used for fabrication of the reservoirs are capable of operating between -40° and 250° F (-40° and 121° C)

### CAUTION:

- Reservoirs are not designed for internal positive or negative pressure applications. For these applications, consult the factory.



**NOTE:** All dimensions are inches [mm]

V — 30 — VLD — B — X6 — S — C

Size (in gallons)

Standard

B= Bolt-down Top  
W= Welded Top

X= Base Extension  
N= No Extension

Access Cover

S= Steel  
D= DIN Aluminum  
N= None

C= Containment Tray  
N= Without Containment Tray

### How to Order:

"L" Shaped Style "D" Reservoir allows you to design the required reservoir for your individual needs.

Please use LDI Part Number when ordering.  
Fill in all items LEAVE NO BLANKS

X6= 6" Base Extension  
X12= 12" Base Extension  
X18= 18" Base Extension  
X24= 24" Base Extension  
X\*\*\*= Customer Specified Extension

### Access Cover Selection

Reservoir size (gal)	Steel Dia (inch)	DIN
10 to 60	12.00	324
80 to 200	16.00	449

### Tank Dimensions (inches)

Capacity (gal)	LDI Model Code	Mounting Centers					Return Connections			Piece Weight (lbs)
		A	B	C	E	F	D1	D2	R1	
10	VLD	24.00	22.00	26.31	6.50	15.44	22.25	18.00	3.06	151
20	VLD	36.00	27.00	26.31	7.50	19.44	34.25	23.00	3.56	238
30	VLD	36.00	30.00	28.31	10.50	19.44	34.25	26.00	5.06	258
45	VLD	42.00	36.00	29.31	12.50	23.44	40.25	32.00	6.06	327
60	VLD	42.00	36.00	29.31	16.50	19.44	40.25	32.00	8.06	351
80	VLD	48.00	42.00	30.31	18.50	23.50	46.25	38.00	9.06	432
100	VLD	50.00	47.00	31.38	21.50	25.50	48.25	43.00	10.56	493
120	VLD	52.00	50.00	32.38	22.50	27.50	50.25	46.00	11.06	528
150	VLD	60.00	50.00	33.38	22.50	27.50	58.25	46.00	11.06	605
200	VLD	60.00	57.00	40.38	25.50	31.50	58.25	53.00	12.56	771

\*Note: Dimensions above do not include extensions

Dimensions and specifications are subject to change without notice. Not all items are Made-To-Stock, contact us for availability.

05/14

Ph : 920-682-6877  
Fx : 920-684-7210



sales@ldi-industries.com  
www.ldi-industries.com