

VERTICAL RESERVOIRS

VERTICAL SERIES

The Vertical Series Non-JIC reservoirs incorporate a square body with a flat bottom that extends past the reservoir body to serve as the mounting surface of the reservoir. A sight glass and hardware to mount a cover are supplied loose with each reservoir.

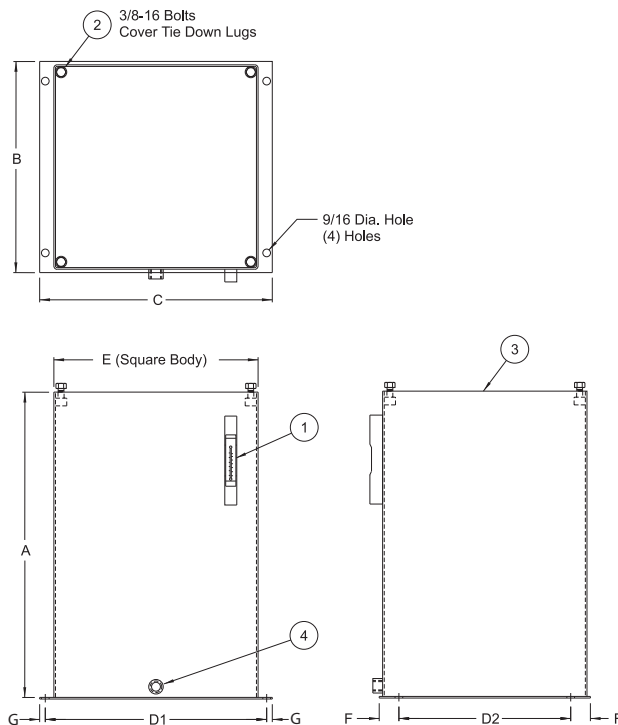
Standard Features:

- (1) 5 inch GT623 Series sight gage - location varies by reservoir selected
- (4) Cover mounting bolts
- Channel gasket for cover plate seal
- (1) 1/2 inch NPT drain with plug
- Steel construction with customer choice of top
- Exterior of reservoir prime painted
- Interior of reservoir coated with rust preventative oil
- Materials
 - Carbon steel construction
 - Buna N seals
 - Transparent molded nylon sight gage with black powder coated steel guard

- NOTE**
- Drain plugs need to be sealed and tightened before use
 - Sight gage shipped loose inside reservoir
 - Industry accepted design practice for hydraulic systems limits maximum operating temperature to 180° F (82° C), but materials used for fabrication of the reservoirs are capable of operating between -40° and 212° F (-40° and 100° C)
 - Cover Plates - Series 1, 2, 2A or 3 ordered as separate items, filler breather included with cover plate (see pages 31-34)

CAUTION:

- Reservoirs are not designed for internal positive or negative pressure applications. For these applications, consult the factory.



NOTE: All dimensions are inches

Tank Dimensions (inches)										
Capacity (gal)	LDI Part No.	A	B	C	Mounting Centers		E	F	G	Piece Weight (lbs)
5	V215145	10.00	12.88	14.50	D1 ± .12	D2 ± .12	12.00	1.44	.50	322
10	V215146	19.69	12.88	14.50	13.50	10.00	12.00	1.44	.50	35
10	V215147	11.75	16.88	19.00	17.50	14.00	16.00	1.44	.75	34
10	V215173	15.00	16.88	19.00	17.50	14.00	16.00	1.44	.75	40
20	V215148	23.69	16.88	19.00	17.50	14.00	16.00	1.44	.75	56
20	V215174	18.00	18.38	20.50	19.00	15.00	17.50	1.69	.75	51
30	V215149	35.69	16.88	19.00	17.50	14.00	16.00	1.44	.75	79
30	V215175	26.00	18.38	20.50	19.00	15.00	17.50	1.69	.75	67
40	V215176	34.00	18.38	20.50	19.00	15.00	17.50	1.69	.75	83

Dimensions and specifications are subject to change without notice. Not all items are Made-To-Stock, contact us for availability.

04/15

Ph : 920-682-6877
Fx : 920-684-7210



sales@ldi-industries.com
www.ldi-industries.com