

"Industry Accepted" Hydraulic Reservoirs

IMPORTANT FEATURES

- Hydro-Craft® Reservoirs meet or exceed all J.I.C. and ASLE Standards
- Scale-free welding process is used
- All Hydro-Craft Reservoirs are carefully fabricated from hot rolled steel plate and sheet, pickled and oiled, which eliminates the need for sand blasting and subsequent residue. Stainless steel also available.
- Fixed baffle properly slotted for correct oil circulation
- Single bolt end caps sized for maximum cleanout opening
- 3/4 NPT drain standard on one end cover
- Hydro-Craft Sight Level Gauge is plated and has extra large sight area with nonbreakable 2X magnifier
- Combination oil level and temperature gauge is standard. Temperature gauge features readings in Centigrade and Fahrenheit.
- Hydro-Craft Filler Breather Assembly is plated and guarded. It has a non-corrosive nylon strainer. Ten times the amount of air flow as comparable units now available.
- Four 2-1/4" diameter lift holes
- "L" Shaped Reservoirs come equipped with a full length piano hinge for opening lid and secure T-handle closure

AVAILABLE OPTIONS:

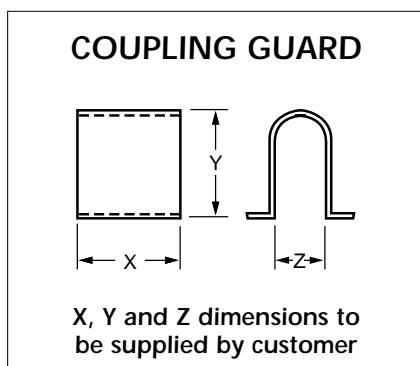
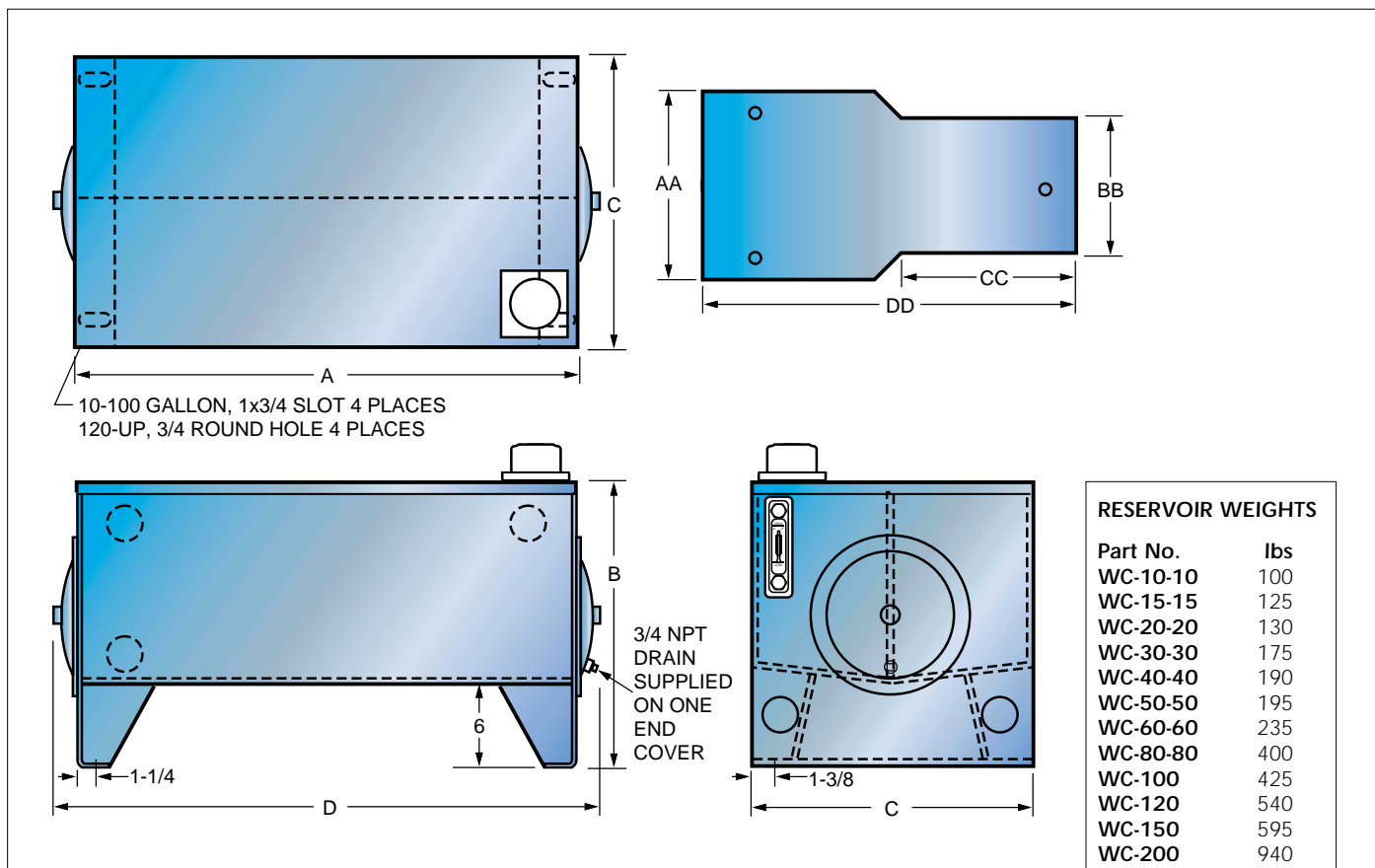
- Mounting Plates – Blank or Drilled & Tapped
- Coupling Guards
- Additional Sight Gauge
- Special duty and high temperature level gauge
- Additional Filler Breather
- Pipe Couplings – Whole or Half, SAE or NPT
- Down Lines
- Interior Paint
- Extra Drain
- Drip Pans, Stands, & Overhead Stands
- Lift Rings
- Removable Baffle

NOTE: These are non-pressurized reservoirs



Photos show just a few of the hundreds of standard and custom reservoirs fabricated by Hydro-Craft® each year.

J.I.C. Reservoir Dimensional Data



MOUNTING PLATES

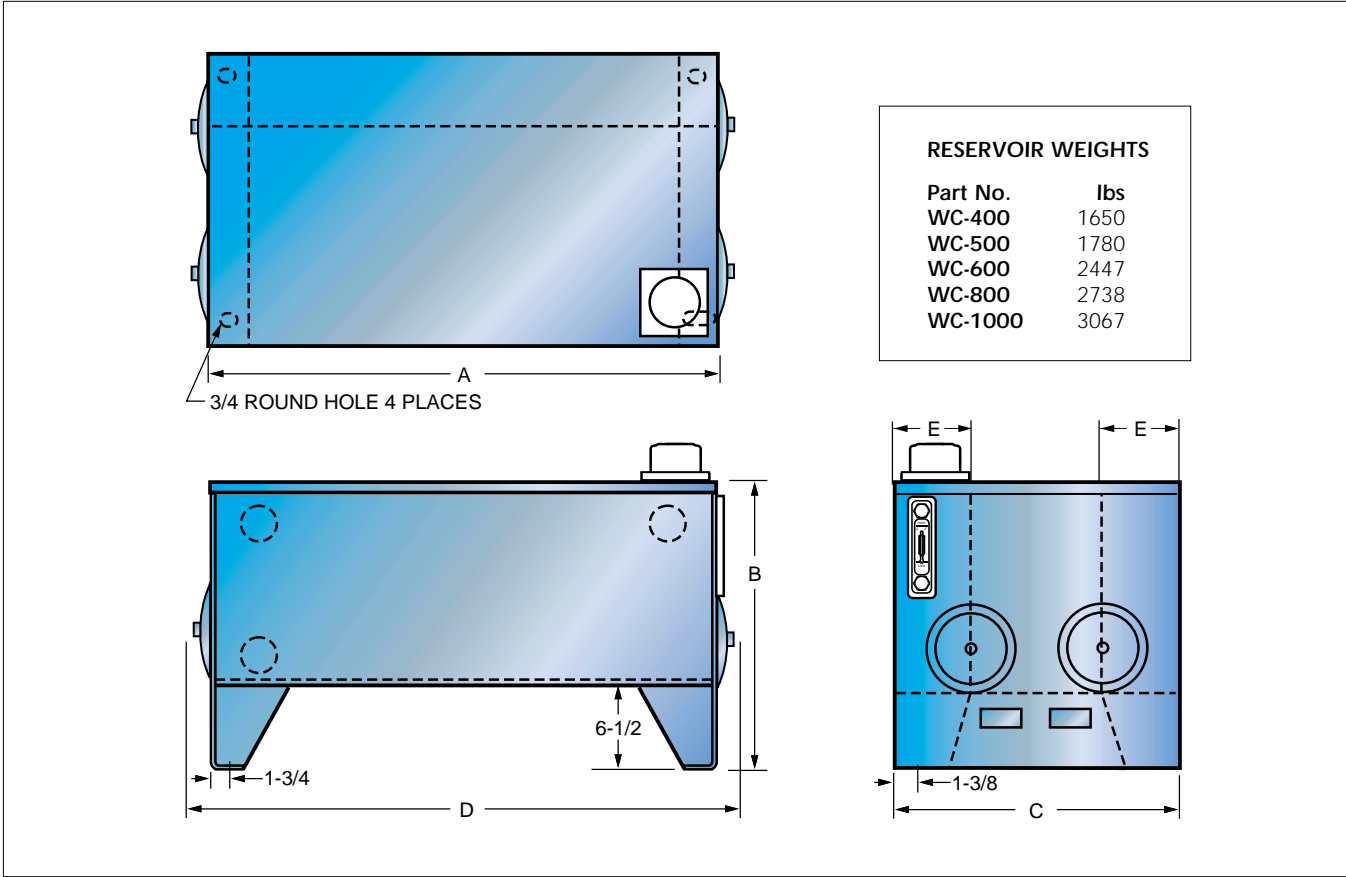
| PART NO. | AA | BB | CC | DD | THICKNESS | MAX FR | HOLES |
|----------|------|------|-------|------|-----------|--------|-------|
| MP-1 | 12.0 | 7.0 | 9.50 | 24.0 | 3/4 | 254 | 3 |
| MP-2 | 13.0 | 9.0 | 11.50 | 30.0 | 1 | 286 | 3 |
| MP-3 | 16.0 | 11.0 | 15.0 | 36.0 | 1-1/4 | 365 | 5 |

J.I.C. RESERVOIR SPECIFICATIONS

| PART NO. | WC-10-10 | WC-15-15 | WC-20-20 | WC-30-30 | WC-40-40 | WC-50-50 | WC-60-60 | WC-80-80 | WC-100 | WC-120 | WC-150 | WC-200 | WC-250 | WC-300 |
|-----------|----------|----------|----------|----------|----------|----------|----------|----------|--------|--------|--------|--------|--------|--------|
| GALLON | 10 | 15 | 20 | 30 | 40 | 50 | 60 | 80 | 100 | 120 | 150 | 200 | 250 | 300 |
| A (L) | 22 | 26 | 30 | 36 | 36 | 36 | 48 | 60 | 60 | 60 | 60 | 72 | 72 | 72 |
| B (H) | 20 | 20 | 20 | 20 | 22 | 23 | 21 | 21-1/4 | 24-1/4 | 25-5/8 | 30-5/8 | 29-3/8 | 32-3/8 | 36-5/8 |
| C (W) | 18 | 18 | 18 | 24 | 24 | 24 | 27 | 27 | 30 | 30 | 30 | 36 | 36 | 36 |
| D | 26 | 30 | 34 | 40-3/4 | 40-3/4 | 40-3/4 | 52-3/4 | 64-3/4 | 64-3/4 | 66 | 66 | 78 | 78 | 78 |
| END COVER | 12 | 12 | 12 | 14 | 14 | 14 | 14 | 14 | 14 | 18 | 18 | 18 | 18 | 18 |
| ENDS | 7 ga. | 7 ga. | 7 ga. | 7 ga. | 7 ga. | 7 ga. | 7 ga. | 7 ga. | 7 ga. | 3/8 | 3/8 | 3/8 | 3/8 | 3/8 |
| TOP | 7 ga. | 7 ga. | 7 ga. | 7 ga. | 7 ga. | 7 ga. | 7 ga. | 3/8 | 3/8 | 3/8 | 3/8 | 3/8 | 3/8 | 3/8 |
| SIDES | 12 ga. | 12 ga. | 12 ga. | 12 ga. | 12 ga. | 12 ga. | 12 ga. | 12 ga. | 12 ga. | 12 ga. | 12 ga. | 7 ga. | 7 ga. | 7 ga. |
| BOTTOM | 12 ga. | 12 ga. | 12 ga. | 12 ga. | 12 ga. | 12 ga. | 12 ga. | 12 ga. | 12 ga. | 12 ga. | 12 ga. | 7 ga. | 7 ga. | 7 ga. |

All dimensions are approximate in inches

Large J.I.C. Reservoir Dimensional Data

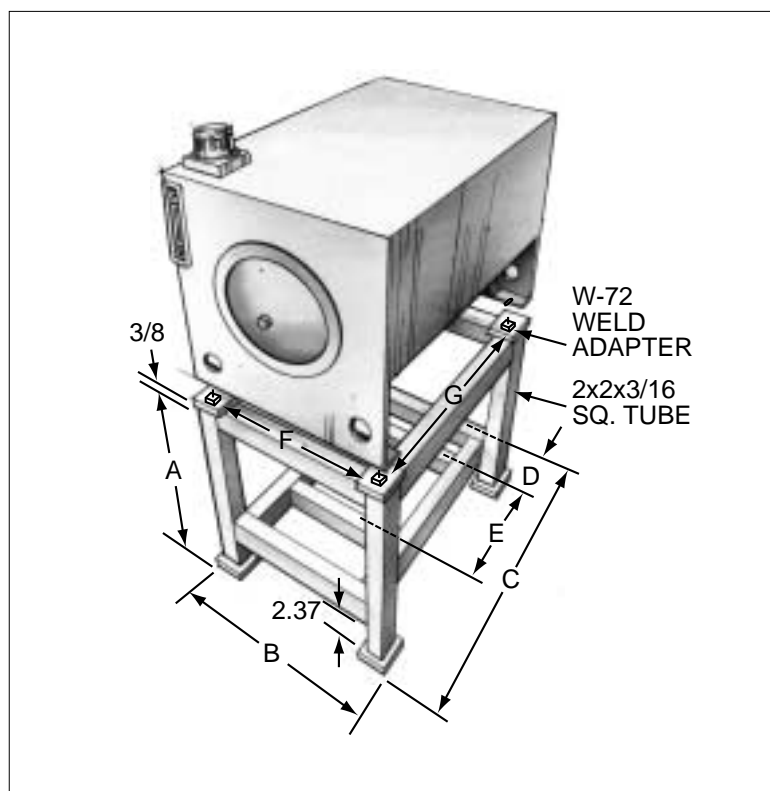


LARGE J.I.C. RESERVOIR SPECIFICATIONS

| Part No. | WC-400 | WC-500 | WC-600 | WC-800 | WC-1000 |
|-----------|---------|---------|---------|---------|---------|
| GALLON | 400 | 500 | 600 | 800 | 1000 |
| A (L) | 72 | 72 | 96 | 96 | 96 |
| B (H) | 37 | 43 | 36 | 44 | 53 |
| C (W) | 48 | 48 | 60 | 60 | 60 |
| D | 78 | 78 | 102 | 102 | 102 |
| E | 13 | 13 | 17 | 17 | 17 |
| END COVER | 18 | 18 | 18 | 18 | 18 |
| ENDS | 1/2 | 1/2 | 1/2 | 1/2 | 1/2 |
| TOP | 1/2 | 1/2 | 1/2 | 1/2 | 1/2 |
| SIDES | 7 Gauge | 7 Gauge | 7 Gauge | 7 Gauge | 7 Gauge |
| BOTTOM | 7 Gauge | 7 Gauge | 1/4 | 1/4 | 1/4 |

| | PART NO. | WEIGHT (lbs) |
|---|----------|--------------|
|  | WCE-10 | 90 |
| | WCE-15 | 106 |
| | WCE-20 | 115 |
| | WCE-30 | 146 |
| | WCE-40 | 156 |
| | WCE-50 | 162 |
| | WCE-60 | 214 |
| | WCE-80 | 252 |
| | WCE-100 | 302 |

(For dimensions, see A, B, C and D on page 4).



The WCE Series Econoline Reservoir

...Quality Reservoirs at up to 17% less than our Standard Line.

These reservoirs are built with the same quality steel and attention to construction as all Hydro-Craft® reservoirs.

The WCE series reservoir is identical to our WC series with the following exceptions:

WCE-10 thru WCE-50

10 ga. ends and top, end cover on one end only.

WCE-60, WCE-80, WCE-100

7 ga. ends, 10 ga. top, end cover on both ends.

WCS Elevated Reservoir Stands

- Hydraulic reservoir stands for mounting standard J.I.C. type reservoirs over the pump and motor
- Provides a positive feed to the pump
- May be stacked for greater floor space saving. Standard units available for Hydro-Craft J.I.C. type reservoirs from 10 to 300 gallon capacity. Industry proven design
- Easy reservoir mounting
- Motor/pump mounting plate supports located per your requirements
- Drip pans available
- Custom frameworks available

SPECIFICATIONS

| PART NO. | WCS-10 | WCS-15 | WCS-20 | WCS-30 | WCS-40 | WCS-50 | WCS-60 | WCS-80 | WCS-100 | WCS-120 | WCS-150 | WCS-200 |
|----------|-------------------------------|--------|--------|--------|--------|--------|--------|--------|---------|---------|---------|---------|
| A | 24 | 24 | 24 | 24 | 24 | 24 | 32 | 32 | 32 | 32 | 32 | 32 |
| B | 18 | 18 | 18 | 24 | 24 | 24 | 27 | 27 | 27 | 30 | 30 | 36 |
| C | 22 | 26 | 30 | 36 | 36 | 36 | 48 | 60 | 60 | 60 | 60 | 72 |
| D | Customer to supply dimensions | | | | | | | | | | | |
| E | Customer to supply dimensions | | | | | | | | | | | |
| F | 12 | 12 | 12 | 18 | 18 | 18 | 21 | 21 | 21 | 24 | 24 | 30 |
| G | 16 | 20 | 24 | 30 | 30 | 30 | 42 | 54 | 54 | 54 | 54 | 66 |

All dimensions are approximate in inches