



**Bulletin HY14-2721-M1/US  
Service and Parts Bulletin**

**Models S-50, S-75,  
S-100, SM, H-75, H-12,  
HM-50 and DS-75**

Effective: August 1, 2002

Supersedes: Cat. No. GSA-04 dated 3/97

---



**Selector Valve  
Float Position Valve  
Double Selector Valve**

---

 **WARNING**

FAILURE OR IMPROPER SELECTION OR IMPROPER USE OF THE PRODUCTS AND/OR SYSTEMS DESCRIBED HEREIN OR RELATED ITEMS CAN CAUSE DEATH, PERSONAL INJURY AND PROPERTY DAMAGE.

This document and other information from Parker Hannifin Corporation, its subsidiaries and authorized distributors provide product and/or system options for further investigation by users having technical expertise. It is important that you analyze all aspects of your application and review the information concerning the product or system in the current product catalog. Due to the variety of operating conditions and applications for these products or systems, the user, through its own analysis and testing, is solely responsible for making the final selection of the products and systems and assuring that all performance, safety and warning requirements of the application are met.

The products described herein, including without limitation, product features, specifications, designs, availability and pricing, are subject to change by Parker Hannifin Corporation and its subsidiaries at any time without notice.

**Offer of Sale**

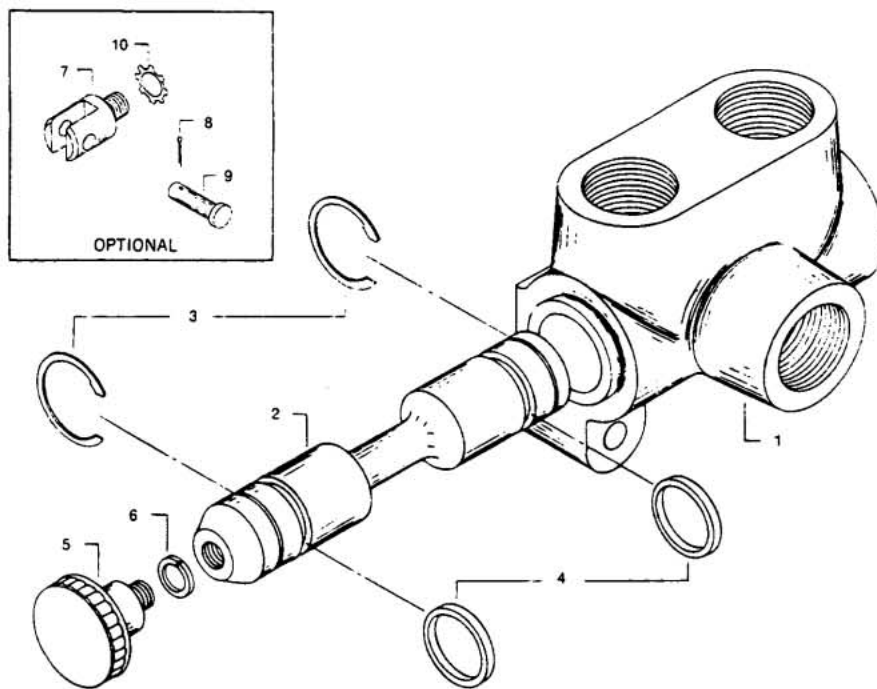
The items described in this document are hereby offered for sale by Parker Hannifin Corporation, its subsidiaries or its authorized distributors. This offer and its acceptance are governed by the provisions stated in the "Offer of Sale".

© Copyright 2002, Parker Hannifin Corporation, All Rights Reserved

bul2721-m1.p65, bl



## Models S-50, S-75, S-100 Selector Valve



### INSTRUCTIONS FOR REPLACING SEALS ON MODELS S-50, S-75, S-100 SELECTOR VALVES

**IMPORTANT:** When installing new Seals care must be taken to prevent dirt entering Valve or System. Extreme care must also be taken to avoid cutting new Seals when installing in Valve.

#### INSTRUCTIONS

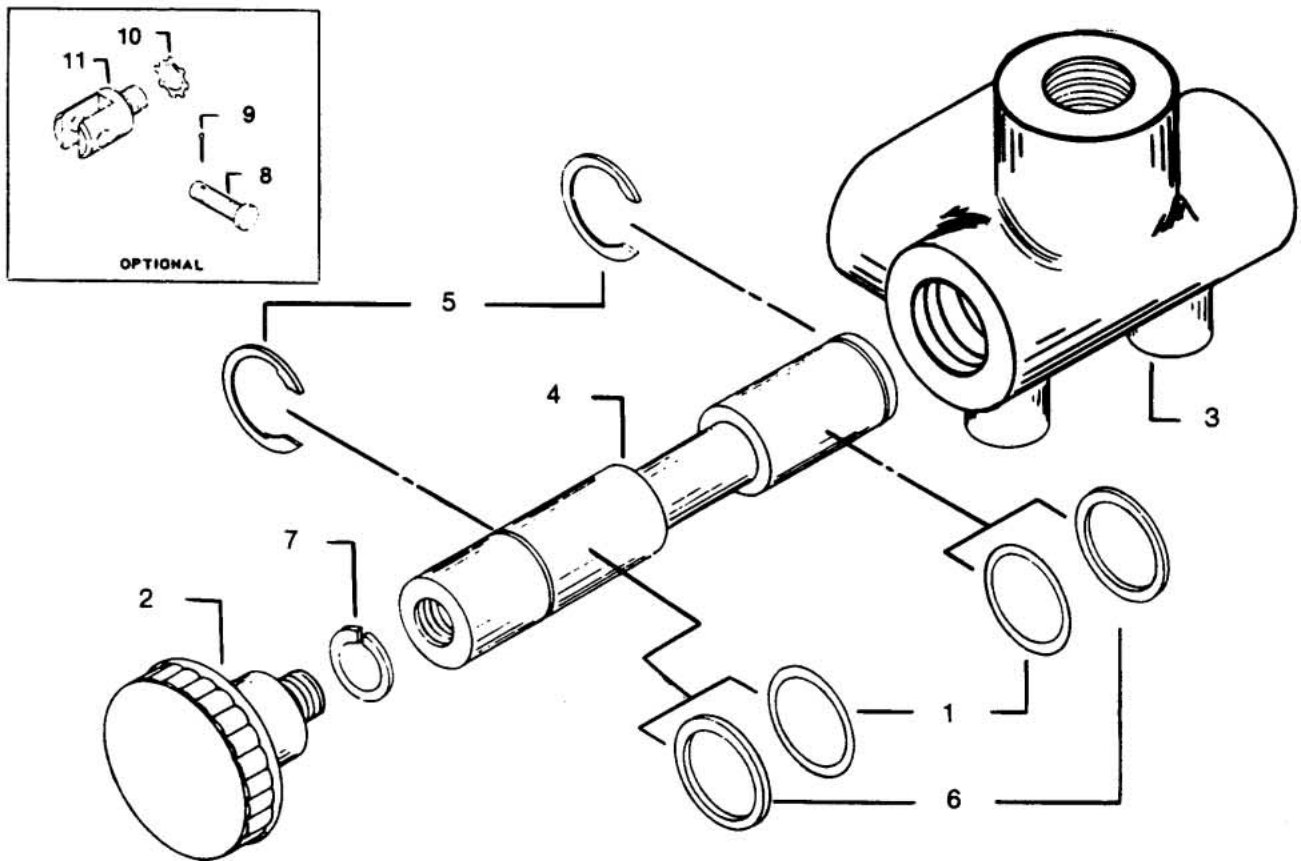
1. Remove Snap Rings at handle end and rear end of spool.
2. Push knob in until rear Seal is exposed. Remove rear Seal.
3. Spool may now be removed from valve body. Remove front Seal from spool.
4. To prevent cutting Seal on sharp edges, wrap spool in 3 or 4 layers of glossy paper, leaving only the front Seal groove exposed. Install new Seal from rear or spool over the paper and into the front Seal groove.
5. Apply clean grease to new Seal. Remove paper and insert spool in body and with a rotating action on knob, push in Spool until rear seal groove is exposed.
6. Install rear Seal in groove.
7. Apply clean grease to rear Seal.
8. **IMPORTANT** – Now install rear Snap Ring and with firm rotating action pull Spool to stop.
9. Install front Snap Ring.

### Models S-50, S-75, S-100 Selector Valve Parts Listing

Item	Quantity Req'd	Description	S-50 Part No.	S-75 Part No.	S-100 Part No.
1	1	Valve Housing	*1140-001	*1120-001	*1310-001
2	1	Valve Spool	*1139-001	*1130-001	*1311-001
3	2	Snap Ring	602-001	1127-001	1312-001
4	2	Spool Seal	8021-001	7700-001	8020-001
5	1	Control Knob	081-001	081-001	081-001
6	1	Lock Washer	1291-001	1291-001	1291-001
7	Opt.	Handle Adapter	1478-001	1478-001	1478-001
8	Opt.	Cotter Pin	086-001	086-001	086-001
9	Opt.	Handle Pin	085-001	085-001	085-001
10	Opt.	Lock Washer	603-001	603-001	603-001
Available Kits – Seal Kit contains items 3 & 4			K-13001	K-14001	K-15001
Control Knob Kit contains items 5 & 6			K-13002	K-13002	K-13002
Clevis Adapter contains items 7 & 10			K-13003	K-13003	K-13003

\*Not sold as separate items. Spools are factory honed to individual housing and are not interchangeable. Repair service available at factory. (See seal replacement instructions on reverse side).

## Model SM Selector Valve



## Model SM Parts Listing

Item	Part No.	Description	Quantity Required
1	062-001	O-Ring	2
2	081-001	Control Knob	1
3	600-xxx*	Valve Housing	1
4	601-001*	Valve Spool	1
5	602-001	Snap Ring	2
6	604-001	Back-Up, Leather	2
	9020-116**	Back-Up, Teflon	2
7	1291-001	Lockwasher	1

Item	Part No.	Description	Quantity Required
<b>OPTIONAL #1478 CLEVIS ASSEMBLY</b>			
8	1857-001	Handle Pin	1
9	086-001	Cotter Pin	1
10	603-001	Lockwasher	1
11	1478-001	Handle Adapter	1

\*NOTE: Spools and Housing cannot be purchased as separate parts, as they are select-hone fitted at the Factory.

### SERVICE KITS

K-16001 Seal Kit contains items 1, 5 & 6

\*\*K-16002 Seal Kit contains items 1, 5 & 6

K-13002 Control Knob contains items 2 & 7

K-13003 Optional Clevis contains items 10 & 11

\*\*Use for valves manufactured after October 1983.

### INSTRUCTIONS

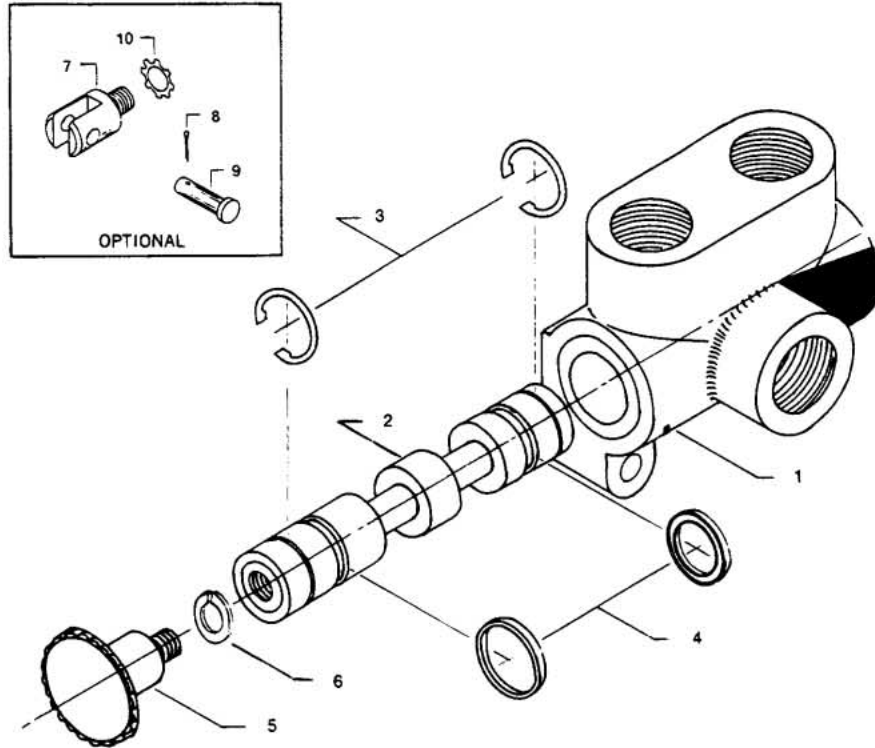
#### FOR REPLACING SEALS ON MODELS SM SELECTOR VALVES

**IMPORTANT:** When installing new seals, care must be taken to prevent dirt entering valve or system. Extreme care must also be taken to avoid cutting new seals when installing in valve.

### INSTRUCTIONS

- Remove #602-001 Snap Ring at REAR end of spool. (Opposite end from knob.)
- Mark housing to show which end is toward knob. Pull on knob, removing spool from valve body.
- Remove both front and rear back-up washers and "O" rings.
- Insert back-up washers in front seal groove in housing, then insert "O" ring in groove inside of back-up washer. Do the same at the other end of the housing.
- Smooth back-up washers and apply clean grease to seals. Turn housing so marked end is toward spool with a rotating action of knob, push in spool all the way.
- Replace #602-001 Snap Ring at rear end of spool.

## Model H-75-3/4 NPT, H-12 SAE12 Float Position Valve



## Model H-75-3/4 NPT, H-12 SAE 12 Float Position Valve

Item	Part No.	Quantity Required	Description
1	1120001	1	Valve Housing-NPT Ports
1	1120002	1	Valve Housing-SAE Port
2	1131001	1	Valve Spool
3	93252032	2	Snap Ring
4	7700001	2	Quad Ring
5	81001	1	Control Knob
6	1291001	1	Lockwasher
7	1478001	Opt.	Clevis
8	86001	Opt.	Cotter Pin
9	85001	Opt.	Handle Pin
10	603001	Opt.	Lock Washer

### Service Kits

K-14001-A Seal Kit contains items 3 & 4  
 K-13002 Control Knob contains items 5 & 6  
 K-13003 Optional Clevis contains items 7 & 10

### INSTRUCTIONS

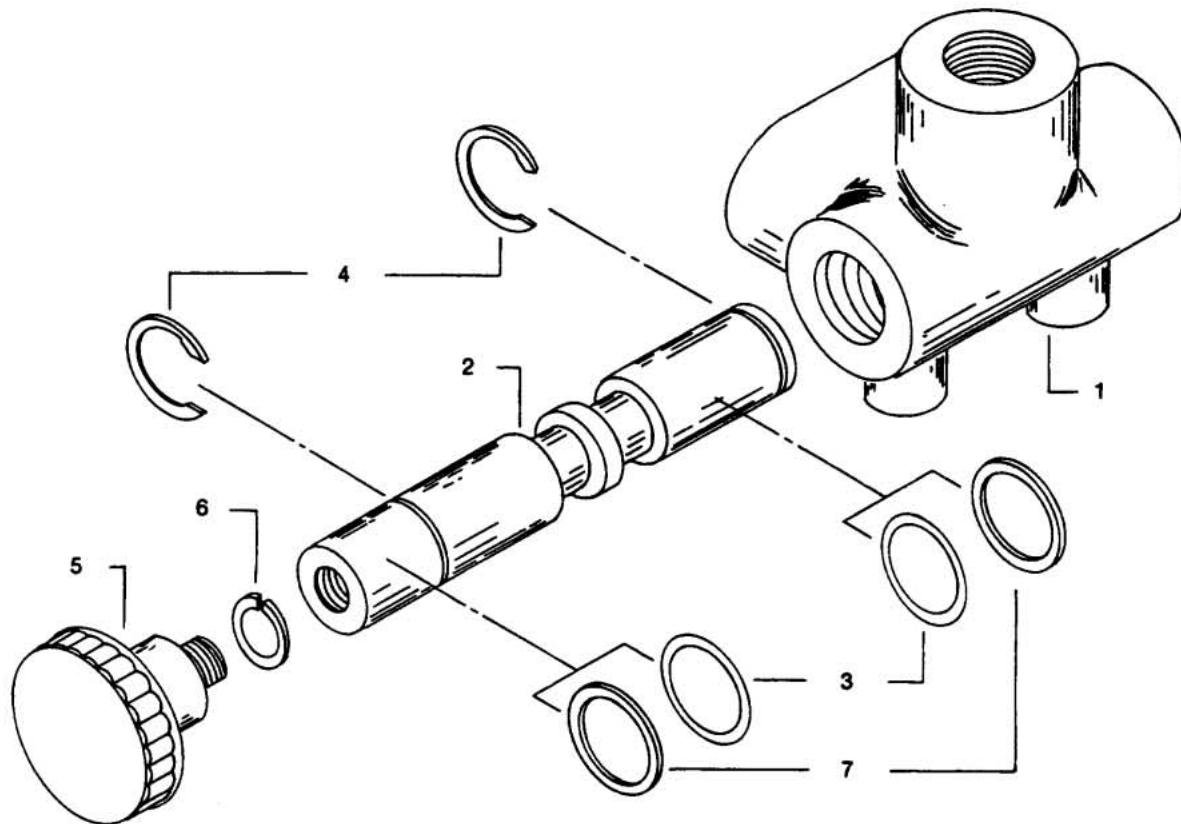
#### FOR REPLACING SEALS ON MODELS SM SELECTOR VALVES

**IMPORTANT:** When installing new seals, care must be taken to prevent dirt entering valve or system. Extreme care must also be taken to avoid cutting new seals when installing in valve.

### INSTRUCTIONS

1. Remove Snap Rings at handle end and rear end of spool.
2. Push knob in until rear Seal is exposed. Remove rear Seal.
3. Spool may now be removed from valve body. Remove front Seal from spool.
4. To prevent cutting Seal on sharp edges, wrap spool in 3 or 4 layers of glossy paper, leaving only the front Seal groove exposed. Install new Seal from rear of spool over the paper and into the front Seal groove.
5. Apply clean grease to new Seal. Remove paper and insert spool in body and with a rotating action on knob, push in Spool until front Seal disappears and until rear Seal groove is exposed.
6. Install rear Seal in groove.
7. Apply clean grease to rear Seal.
8. **IMPORTANT** - Now install rear Snap Ring and with firm rotating action pull Spool to stop.
9. Install front Snap Ring.

## Model HM-50 Float Position Valve



## Model HM-50 Float Position Valve Parts Listing

Item	Part No.	Quantity Required	Description
1	600-xxx	1	Valve Housing
2	606-001	1	Valve Spool
3	062-001	2	"O" Ring
4	602-001	2	Snap Ring
5	081-001	1	Control Knob
6	1291-001	1	Lock Washer
7	604-001	2	Back-up Leather

### Service Kits

K-16001-B Seal Kit contains items 3, 4 & 7  
 K-13002 Control Knob contains items 5 & 6  
 K-13003 Optional Clevis contains one 1478-001  
 clevis tone 603-001 washer

\*NOTE: Spools and Housing cannot be purchased as separate parts, as they are select-hone fitted at the Factory.

### INSTRUCTIONS

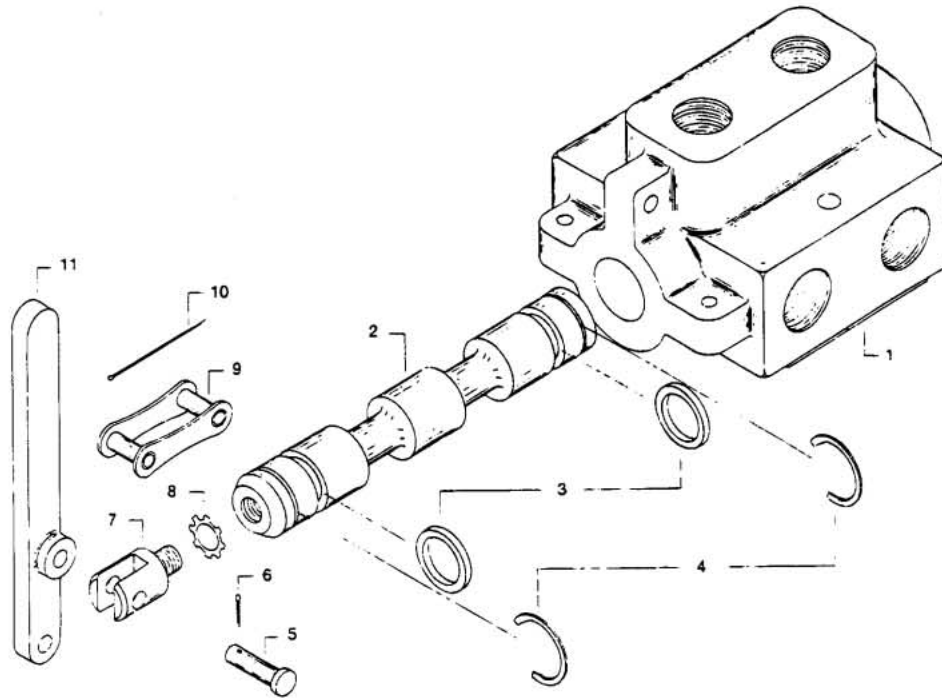
#### FOR REPLACING SEALS ON MODELS HM-50 FLOAT POSITION VALVES

**IMPORTANT:** When installing new seals, care must be taken to prevent dirt entering valve or system. Extreme care must also be taken to avoid cutting new seals when installing in valve.

### INSTRUCTIONS

1. Remove #602-001 Snap Ring at REAR end of spool. (Opposite end from knob.)
2. Mark housing to show which end is toward knob. Pull on knob, removing spool from valve body.
3. Remove both front and rear back-up leathers and "O" rings.
4. Insert back-up leather in front seal groove in housing, then insert "O" ring in groove *inside* of back-up leather. Do the same at the other end of the housing.
5. Smooth back-up leathers and apply clean grease to seals. Turn housing so marked end is toward spool with a rotating action of knob, push in spool all the way.
6. Replace #602-001 Snap Ring at rear end of spool.

## Model DS-75 Double Selector Valve



### Model DS-75 Double Selector Valve Parts Listing

Item	Part No.	Description	Quantity Required
1	*1475-001	Valve Housing	1
2	*1477-001	Valve Spool	1
3	7700-001	Spool Seal	2
4	1127-001	Snap Ring	2
5	085-001	Handle Pin	1
6	086-001	Cotter Pin	1
7	1478-001	Handle Adapter	1
8	603-001	Lock Washer	1
9	1479-001	Handle Link	1
10	1474-001	Link Cotter Pin	1
11	1476-001	Handle	1

#### Service Kits

K-14001-A Seal Kit contains items 3 & 4

K-14002 Handle Kit contains items 5, 6, 9, 10 & 11

K-13003 Clevis Adapter contains items 7 & 8

\*Not sold as separate items. Spools are factory honed to individual housing and are not interchangeable. Repair service available at factory.

#### INSTRUCTIONS

##### FOR REPLACING SEALS ON MODEL DS-75 SELECTOR VALVE

*IMPORTANT: When installing new seals, care must be taken to prevent dirt entering valve or system. Extreme care must also be taken to avoid cutting new seals when installing in valve.*

#### INSTRUCTIONS

1. Remove snap rings at handle end and rear end of spool.
2. Push clevis in until rear seal is exposed. Remove rear seal.
3. Spool may now be removed from valve body. Remove front seal from spool.
4. To prevent cutting seal on sharp edges, wrap spool in 3 or 4 layers of glossy paper, leaving only the front seal groove exposed. Install new seal from rear of spool over the paper and into the front seal groove.
5. Apply clean grease to new seal. Remove paper and insert spool in body and

with a rotating action on clevis, push in spool until front seal disappears and until rear seal groove is exposed.

6. Install rear seal in groove.
7. Apply clean grease to rear seal.
8. **IMPORTANT** – Now install rear snap ring and with firm rotating action pull spool to stop.
9. Install front snap ring.



**Parker Hannifin Corporation**  
Hydraulic Valve Division  
520 Ternes Avenue  
Elyria, Ohio, USA 44035  
Tel: (440) 366-5200  
Fax: (440) 366-5253  
[www.parker.com/hydraulicvalve](http://www.parker.com/hydraulicvalve)

Bulletin HY14-2721-M1/US,  
2C, 8/02, PHD