

A M E R I C A N W E T T A N K S Y S T E M S

AMERICAN



MOBILE POWER

SADDLE MOUNT RESERVOIRS

get the
WET TANK

Solution



Vol. 9

1-800-634-8265

www.americanmobilepower.com



WARRANTY

The American Wet Tank System is warranted to be free of defects in material or workmanship and to meet American Mobile Power's written specifications at the time of sale. American's obligation and liability under this warranty is expressly limited to repairing or replacing, at American's option, within one year after date of original installation any defective part or parts or any product not meeting the specifications.

This warranty is in lieu of all other warranties, express or implied. American makes no warranty of merchant ability or of fitness for any particular purpose. American's obligation under this warranty shall not include any transportation charges or costs of installation of any liability for direct, indirect, special, incidental, or consequential damages or delay. The remedies set forth herein are exclusive, and American's liability with respect to any contract or sale or anything done in connection therewith, whether in contract, in tort, under any warranty, or otherwise, shall not, except as expressly provided herein, exceed the price of the product or part on which such liability is based.

If requested by American, products or parts for which a warranty claim is made are to be returned transportation prepaid to a Service Center designated by American. Any installation or use not in accordance with the catalog or package instructions, other improper use, operation beyond an intermittent duty, substitution of parts not approved by American, use with equipment other than the equipment on which the Wet Tank System is first installed, or alteration or repair made to the unit other than at an American designated Service Facility, shall void this warranty.



WARNING:

IMPROPER SELECTION OR IMPROPER USE OF THE PRODUCTS AND/OR SYSTEMS DESCRIBED HEREIN OR RELATED ITEMS CAN CAUSE DEATH, PERSONAL INJURY AND PROPERTY DAMAGE.

This document and other information from American Mobile Power and authorized distributors provide this product and/or system options for further investigation by users having technical expertise. It is important that you analyze all aspects of your application and review the information concerning the product or system in the current product catalog. Due to the variety of operating conditions and applications for these products or systems, the user, through its own analysis and testing, is solely responsible for making the final selection of the products and systems and assuring that all performance, safety and warning requirements of the application are met. The products described herein, including without limitation, product features and specifications. Designs are subject to change by American Mobile Power at any time without notice.



Model A3500

Steel Saddlemount - 50 Gallon

Tank Size: 24" diameter x 27" long

Shipping Weight: 80#

Mounting Kit Weight: 44#

Roll-formed cylindrical steel tank, domed ends are die stamped. Tank powder coated black. Filtered mushroom vent in tank top for increased air exchange. Filler/Breather assembly - including 40 micron filter/breather cap (chain mounted) with nylon strainer basket and bayonet closure. Three 1-1/4" NPT ports with built-in diffusers. Includes one 1-1/4" NPT plug. Includes AMK-624-C Mounting kit: two frame mount powder coated J-brackets (rubber shielded) and two rubber shielded, powder coated carbon steel strap assemblies. Unit is packaged in one carton and shipped by UPS.

Ordering Options

Product	Product Description
A3500	1-1/4" NPT bottom ports
A3500-ST	1-1/4" NPT bottom ports & Sight Temperature Gauge
A3500-15	1-1/2" NPT bottom ports
A3500-15ST	1-1/2" NPT bottom ports & Sight Temperature Gauge
* A3500-2	2" NPT bottom ports
* A3500-2ST	2" NPT bottom ports & Sight Temperature Gauge

*2" Ports are non-diffused

CHANGES MAY BE MADE TO PRODUCT WITHOUT NOTICE.

TO SEE OUR FULL LINE OF DRAWINGS GO TO WWW.AMERICANMOBILEPOWER.COM

Order No.	Weight	Description	Page #
ABA-138	1#	Breather Vent - 3/8" NPT	39
APP-204	1#	Steel Port Plug - 1-1/4" NPT	41
ABC-315	1#	Filter/Breather Cap Only	39
AFC-330	2#	Fill Assembly	38
AMK-624-C	44#	Carbon Steel Mounting Kit Complete	34
AMT-350	80#	Steel Saddlemount Tank Only (50 Gallon)	
ALL TANKS FACTORY TESTED			

OPTION: Available with stainless steel straps. Also available with a hose support mount.

Model A3525

Steel Saddlemount - 25 Gallon

Tank Size: 24" diameter x 15" long

Shipping Weight: 57#

Mounting Kit Weight: 44#



Roll-formed cylindrical steel tank, domed ends are die stamped. Tank powder coated black. Filler/Breather assembly - including 40 micron filter/breather cap (chain mounted) with nylon strainer basket and bayonet closure. Three 1-1/4" NPT ports with built-in diffusers. Includes one 1-1/4" NPT plug. Includes AMK-624-C Mounting Kit: two frame mount powder coated J-brackets (rubber shielded) and two rubber shielded, powder coated carbon steel strap assemblies. Unit is packaged in one carton and shipped by UPS.

Ordering Options

Product	Product Description
A3525	1-1/4" NPT bottom ports
A3525-ST	1-1/4" NPT bottom ports & Sight Temperature Gauge
* A3525-2	2" NPT bottom ports
* A3525-2ST	2" NPT bottom ports & Sight Temperature Gauge

*2" Ports are non-diffused

CHANGES MAY BE MADE TO PRODUCT WITHOUT NOTICE.

TO SEE OUR FULL LINE OF DRAWINGS GO TO WWW.AMERICANMOBILEPOWER.COM

Order No.	Weight	Description	Page #
AFC-330	2#	Fill Assembly	38
ABC-315	1#	Filter/Breather Cap Only	39
APP-204	1#	Steel Port Plug - 1-1/4" NPT	41
AMK-624-C	44#	Carbon Steel Mounting Kit Complete	34
AMT-352	57#	Steel Saddlemount Tank Only (25 Gal.)	
ALL TANKS FACTORY TESTED			

OPTION: Available with stainless steel straps. Also available with a hose support mount.



Model A3535

Steel Saddlemount - 35 Gallon

Tank Size: 24" diameter x 19" long

Shipping Weight: 62#

Mounting Kit Weight: 44#

Roll-formed cylindrical steel tank, domed ends are die stamped. Tank powder coated black. Filler/Breather assembly - including 40 micron filter/breather cap (chain mounted) with nylon strainer basket and bayonet closure. Three 1-1/4" NPT ports with built-in diffusers. Includes one 1-1/4" NPT plug. Includes AMK-624-C Mounting kit: two frame mount powder coated J-brackets (rubber shielded) and two rubber shielded, powder coated carbon steel strap assemblies. Unit is packaged in one carton and shipped by UPS.

Ordering Options

Ordering Options	
Product	Product Description
A3535	1-1/4" NPT bottom ports
A3535-ST	1-1/4" NPT bottom ports & Sight Temperature Gauge
* A3535-2	2" NPT bottom ports
* A3535-2ST	2" NPT bottom ports & Sight Temperature Gauge

*2" Ports are non-diffused

CHANGES MAY BE MADE TO PRODUCT WITHOUT NOTICE.
TO SEE OUR FULL LINE OF DRAWINGS GO TO WWW.AMERICANMOBILEPOWER.COM

Order No.	Weight	Description	Page #
AFC-330	2#	Fill Assembly	38
ABC-315	1#	Filter/Breather Cap Only	39
APP-204	1#	Steel Port Plug - 1-1/4" NPT	41
AMK-624-C	44#	Carbon Steel Mounting Kit Complete	34
AMT-353	62#	Steel Saddlemount Tank Only (35 Gal.)	
ALL TANKS FACTORY TESTED			

OPTION: Available with stainless steel straps. Also available with a hose support mount.

Model A3560-ST

Steel Saddlemount - 60 Gallon

Tank Size: 24" diameter x 33" long

Shipping Weight: 95#

Mounting Kit Weight: 44#



Roll-formed cylindrical steel tank, domed ends are die stamped. Tank powder coated black. Filtered mushroom vent in tank top for increased air exchange. Filler/Breather assembly - including 40 micron filter/breather cap (chain mounted) with nylon strainer basket and bayonet closure. Three 1-1/4" NPT ports with built-in diffusers. Includes one 1-1/4" NPT plug. Includes AMK-624-C Mounting kit: two frame mount powder coated J-brackets (rubber shielded) and two rubber shielded, powder coated carbon steel strap assemblies. Oil and temperature level indicator included. Unit is packaged in one carton and shipped by UPS.

Ordering Options

Product	Product Description
* A3560-2ST	2" NPT bottom ports & Sight Temperature Gauge

*2" Ports are non-diffused

CHANGES MAY BE MADE TO PRODUCT WITHOUT NOTICE.

TO SEE OUR FULL LINE OF DRAWINGS GO TO WWW.AMERICANMOBILEPOWER.COM

Order No.	Weight	Description	Page #
ABA-138	1#	Breather Vent - 3/8" NPT	39
APP-204	1#	Steel Port Plug - 1-1/4" NPT	41
ABC-315	1#	Filter/Breather Cap Only	39
AFC-330	2#	Fill Assembly	38
AMK-624-C	44#	Carbon Steel Mounting Kit Complete	34
AMT-356	95#	Steel Saddlemount Tank Only (60 Gallon)	
ASG-105	1#	Sight/Temperature Gauge	40
ALL TANKS FACTORY TESTED			

OPTION: Available with stainless steel straps. Also available with a hose support mount.



Model A3575

Steel Saddlemount - 75 Gallon

Tank Size: 24" diameter x 39" long

Shipping Weight: 115#

Mounting Kit Weight: 63#

Roll-formed cylindrical steel tank, domed ends are die stamped; fully baffled. Tank powder coated black. Filtered mushroom vent in tank top for increased air exchange. Filler/Breather assembly - including 40 micron filter/breather cap (chain mounted) with nylon strainer basket and bayonet closure. Three 1-1/2" NPT ports with built-in diffusers. Includes one 1-1/2" NPT plug. Includes AMK-624-C3 Mounting kit: three frame mount powder coated J-brackets (rubber shielded) and three rubber shielded, powder coated carbon steel strap assemblies. Unit is packaged in two cartons and shipped by UPS.

Ordering Options

Product	Product Description
A3575	1-1/2" NPT bottom ports
A3575-ST	1-1/2" NPT bottom ports & Sight Temperature Gauge
* A3575-2	2" NPT bottom ports
* A3575 -2ST	2" NPT bottom ports & Sight Temperature Gauge

*2" Ports are non-diffused

CHANGES MAY BE MADE TO PRODUCT WITHOUT NOTICE.

TO SEE OUR FULL LINE OF DRAWINGS GO TO WWW.AMERICANMOBILEPOWER.COM

Order No.	Weight	Description	Page #
ABA-138	1#	Breather Vent - 3/8" NPT	39
APP-202	1#	Steel Port Plug - 1-1/2" NPT	41
ABC-315	1#	Filter/Breather Cap Only	39
AFC-330	2#	Fill Assembly	38
AMK-624-C/3	63#	Carbon Steel Mounting Kit Complete (75 Gal.)	35
AMT-357	115#	Steel Saddlemount Tank Only (75 Gal.)	
ALL TANKS FACTORY TESTED			

OPTION: Available with stainless steel straps. Also available with a hose support mount.

Model A35100-ST

Steel Saddlemount - 100 Gallon

Tank Size: 24" diameter x 51" long

Shipping Weight: 138#

Mounting Kit Weight: 88#



Roll-formed cylindrical steel tank, domed ends are die stamped; fully baffled. Tank powder coated black. Two filtered mushroom vents in tank top for increased air exchange. Filler/Breather assembly - including 40 micron filter/breather cap (chain mounted) with nylon strainer basket and bayonet closure. Three 2" NPT ports. Bottom center port is diffused. Includes one 2" NPT plug. Two full baffles, providing a three compartment tank. Includes two AMK-624-C Mounting kits: four frame mount powder coated J-brackets (rubber shielded) and four rubber shielded, powder coated carbon steel strap assemblies. Oil and temperature level indicator included. Unit is packaged in one carton and shipped by truck freight.

**CHANGES MAY BE MADE TO PRODUCT WITHOUT NOTICE.
TO SEE OUR FULL LINE OF DRAWINGS GO TO WWW.AMERICANMOBILEPOWER.COM**

Order No.	Weight	Description	Page #
ABA-138	1#	Breather Vent - 3/8" NPT	39
APP-220	1#	Steel Port Plug - 2" NPT	41
ABC-315	1#	Filter/Breather Cap Only	39
AFC-330	2#	Fill Assembly	38
AMK-624-C	44#	Carbon Steel Mounting Kit Complete	34
AMT-351	138#	Steel Saddlemount Tank Only (100 Gallon)	
ASG-105	1#	Sight/Temperature Gauge	40
ALL TANKS FACTORY TESTED			

OPTION: Available with stainless steel straps. Also available with a hose support mount.



Picture shown with stainless strap option.

Model A4500

Aluminum Saddlemount - 50 Gallon

Tank Size: 24" diameter x 27" long

Shipping Weight: 40#

Mounting Kit Weight: 44#

Roll-formed cylindrical aluminum tank, domed ends are die stamped; bright mill finish. Filtered mushroom vent in tank top for increased air exchange. Filler/Breather assembly - including 40 micron filter/breather cap (chain mounted) with nylon strainer basket and bayonet closure. Three heavy duty machined 1-1/4" NPT ports with built-in diffusers. One 1-1/4" NPT port plug included. Includes AMK-624-C Mounting kit: two frame mount powder coated J-brackets (rubber shielded) and two rubber shielded, powder coated carbon steel strap assemblies. Unit is packaged in one carton and shipped by UPS.

Ordering Options

<i>Product</i>	<i>Product Description</i>
A4500	1-1/4" NPT bottom ports
A4500-ST	1-1/4" NPT bottom ports & Sight Temperature Gauge
A4500-15	1-1/2" NPT bottom ports
A4500-15ST	1-1/2" NPT bottom ports & Sight Temperature Gauge
* A4500-2	2" NPT bottom ports
* A4500-2ST	2" NPT bottom ports & Sight Temperature Gauge

*2" Ports are non-diffused

CHANGES MAY BE MADE TO PRODUCT WITHOUT NOTICE.

TO SEE OUR FULL LINE OF DRAWINGS GO TO WWW.AMERICANMOBILEPOWER.COM

Order No.	Weight	Description	Page #
ABA-138	1#	Breather Vent - 3/8" NPT	39
APP-204	1#	Steel Port Plug - 1-1/4" NPT	41
ABC-315	1#	Filter/Breather Cap Only	39
AFC-330	2#	Fill Assembly	38
AMK-624-C	44#	Carbon Steel Mounting Kit Complete	34
AMT-450	40#	Aluminum Saddlemount Tank Only (50 Gal.)	
ALL TANKS FACTORY TESTED			

OPTION: Available with stainless steel straps. Also available with a hose support mount (which is recommended.) Mirrored polished option also available.

Model A4525

Aluminum Saddlemount - 25 Gallon

Tank Size: 24" diameter x 15" long

Shipping Weight: 29#

Mounting Kit Weight: 44#



Picture shown with stainless strap option.

Roll-formed cylindrical aluminum tank, domed ends are die stamped. Bright mill finish. Filler/Breather assembly - including 40 micron filter/breather cap (chain mounted) with nylon strainer basket and bayonet closure. Three heavy duty machined 1-1/4" NPT ports with built-in diffusers. One 1-1/4" NPT port plug included. Includes AMK-624-C Mounting kit: two frame mount powder coated J-brackets (rubber shielded) and two rubber shielded, powder coated carbon steel strap assemblies. Unit is packaged in one carton and shipped UPS.

Ordering Options

Product	Product Description
A4525	1-1/4" NPT bottom ports
A4525-ST	1-1/4" NPT bottom ports & Sight Temperature Gauge
* A4525-2	2" NPT bottom ports
* A4525-2ST	2" NPT bottom ports & Sight Temperature Gauge

*2" Ports are non-diffused

CHANGES MAY BE MADE TO PRODUCT WITHOUT NOTICE.

TO SEE OUR FULL LINE OF DRAWINGS GO TO WWW.AMERICANMOBILEPOWER.COM

Order No.	Weight	Description	Page #
AFC-330	2#	Fill Assembly	38
ABC-315	1#	Filter/Breather Cap Only	39
APP-204	1#	Steel Port Plug - 1-1/4" NPT	41
AMK-624-C	44#	Carbon Steel Mounting Kit Complete	34
AMT-452	29#	Aluminum Saddlemount Tank Only (25 Gal.)	
ALL TANKS FACTORY TESTED			

OPTION: Available with stainless steel straps. Also available with a hose support mount (which is recommended.) Mirrored polished option also available.



Picture shown with stainless strap option.

Model A4535

Aluminum Saddlemount - 35 Gallon

Tank Size: 24" diameter x 19" long

Shipping Weight: 32#

Mounting Kit Weight: 44#

Roll-formed cylindrical aluminum tank, domed ends are die stamped. Bright mill finish. Filler/Breather assembly - including 40 micron filter/breather cap (chain mounted) with nylon strainer basket and bayonet closure. Three heavy duty machined 1-1/4" NPT ports with built-in diffusers. One 1-1/4" NPT port plug included. Includes AMK-624-C Mounting kit: two frame mount powder coated J-brackets (rubber shielded) and two rubber shielded, powder coated carbon steel strap assemblies. Unit is packaged in one carton and shipped UPS.

Ordering Options

Product	Product Description
A4535	1-1/4" NPT bottom ports
A4535-ST	1-1/4" NPT bottom ports & Sight Temperature Gauge
* A4535-2	2" NPT bottom ports
* A4535-2ST	2" NPT bottom ports & Sight Temperature Gauge

*2" Ports are non-diffused

CHANGES MAY BE MADE TO PRODUCT WITHOUT NOTICE.

TO SEE OUR FULL LINE OF DRAWINGS GO TO WWW.AMERICANMOBILEPOWER.COM

Order No.	Weight	Description	Page #
AFC-330	2#	Fill Assembly	38
ABC-315	1#	Filter/Breather Cap Only	39
APP-204	1#	Steel Port Plug - 1-1/4" NPT	41
AMK-624-C	44#	Carbon Steel Mounting Kit Complete	34
AMT-453	32#	Aluminum Saddlemount Tank Only (35 Gal.)	
ALL TANKS FACTORY TESTED			

OPTION: Available with stainless steel straps. Also available with a hose support mount (which is recommended.) Mirrored polished option also available.

Model A4560-ST

Aluminum Saddlemount - 60 Gallon

Tank Size: 24" diameter x 33" long

Shipping Weight: 50#

Mounting Kit Weight: 44#



Picture shown with stainless strap option.

Roll-formed cylindrical aluminum tank, domed ends are die stamped. Bright mill finish. Filtered mushroom vent in tank top for increased air exchange. Filler/Breather assembly - including 40 micron filter/breather cap (chain mounted) with nylon strainer basket and bayonet closure. Three heavy duty machined 1-1/4" NPT ports with built-in diffusers. One 1-1/4" NPT port plug included. Includes AMK-624-C Mounting kit: two frame mount powder coated J-brackets (rubber shielded) and two rubber shielded, powder coated carbon steel strap assemblies. Oil and temperature level indicator included. Unit is packaged in one carton and shipped UPS.

Ordering Options

Product	Product Description
* A4560-2ST	2" NPT bottom ports & Sight Temperature Gauge

*2" Ports are non-diffused

**CHANGES MAY BE MADE TO PRODUCT WITHOUT NOTICE.
TO SEE OUR FULL LINE OF DRAWINGS GO TO WWW.AMERICANMOBILEPOWER.COM**

Order No.	Weight	Description	Page #
ABA-138	1#	Breather Vent - 3/8" NPT	39
APP-204	1#	Steel Port Plug - 1-1/4" NPT	41
ABC-315	1#	Filter/Breather Cap Only	39
AFC-330	2#	Fill Assembly	38
AMK-624-C	44#	Carbon Steel Mounting Kit Complete	34
AMT-456	50#	Aluminum Saddlemount Tank Only (60 Gal.)	
ASG-105	1#	Sight/Temperature Gauge	40
ALL TANKS FACTORY TESTED			

OPTION: Available with stainless steel straps. Also available with a hose support mount (which is recommended.) Mirrored polished option also available.



Picture shown with stainless strap option.

Model A4575

Aluminum Saddlemount - 75 Gallon

Tank Size: 24" diameter x 39" long

Shipping Weight: 55#

Mounting Kit Weight: 63#

Roll-formed cylindrical aluminum tank, domed ends are die stamped. Bright mill finish. Filtered mushroom vent in tank top for increased air exchange. Filler/Breather assembly - including 40 micron filter/breather cap (chain mounted) with nylon strainer basket and bayonet closure. Three heavy duty machined 1-1/2" NPT ports with built-in diffusers. One 1-1/2" NPT port plug included. Includes AMK-624-C3 Mounting kit: three frame mount powder coated J-brackets (rubber shielded) and three rubber shielded, powder coated carbon steel strap assemblies. Unit is packaged in one carton and shipped UPS.

Ordering Options

<i>Product</i>	<i>Product Description</i>
A4575	1-1/2" NPT bottom ports
A4575-ST	1-1/2" NPT bottom ports & Sight Temperature Gauge
* A4575-2	2" NPT bottom ports
* A4575-2ST	2" NPT bottom ports & Sight Temperature Gauge

*2" Ports are non-diffused

CHANGES MAY BE MADE TO PRODUCT WITHOUT NOTICE.

TO SEE OUR FULL LINE OF DRAWINGS GO TO WWW.AMERICANMOBILEPOWER.COM

Order No.	Weight	Description	Page #
ABA-138	1#	Breather Vent - 3/8" NPT	39
APP-202	1#	Steel Port Plug - 1-1/2" NPT	41
ABC-315	1#	Filter/Breather Cap Only	39
AFC-330	2#	Fill Assembly	38
AMK-624-C/3	63#	Carbon Steel Mounting Kit Complete (75 Gal.)	35
AMT-457	55#	Aluminum Saddlemount Tank Only (75 Gal.)	
ALL TANKS FACTORY TESTED			

OPTION: Available with stainless steel straps. Also available with a hose support mount (which is recommended.) Mirrored polished option also available.

Model A45100-ST

Aluminum Saddle Mount - 100 Gallon

Tank Size: 24" diameter x 51" long

Shipping Weight: 92#

Mounting Kit Weight: 88#



Picture shown with stainless strap option.

Roll-formed cylindrical aluminum tank, domed ends are die stamped. Bright mill finish. Two filtered mushroom vents in tank top for increased air exchange. Filler/Breather assembly - including 40 micron filter/breather cap (chain mounted) with nylon strainer basket and bayonet closure. Three heavy duty machined 2" NPT ports. Bottom center port is diffused. One 2" port plug included. Two full baffles, providing a three compartment tank. Includes two AMK-624-C Mounting kits: four frame mount powder coated J-brackets (rubber shielded) and four rubber shielded, powder coated carbon steel strap assemblies. Oil and temperature level indicator included. Unit is packaged in one carton and shipped by truck freight.

**CHANGES MAY BE MADE TO PRODUCT WITHOUT NOTICE.
TO SEE OUR FULL LINE OF DRAWINGS GO TO WWW.AMERICANMOBILEPOWER.COM**

Order No.	Weight	Description	Page #
ABA-138	1#	Breather Vent - 3/8" NPT	39
APP-220	1#	Steel Port Plug - 2" NPT	41
ABC-315	1#	Filter/Breather Cap Only	39
AFC-330	2#	Fill Assembly	38
AMK-624-C	44#	Carbon Steel Mounting Kit Complete	34
AMT-451	92#	Aluminum Saddle Mount Tank Only (100 Gal.)	
ASG-105	1#	Sight/Temperature Gauge	40
ALL TANKS FACTORY TESTED			

OPTION: Available with stainless steel straps. Also available with a hose support mount (which is recommended.) Mirrored polished option also available.

Specialty Hydraulic Tanks

Model A4535-DS90-ST

Specialty Aluminum Saddlemount Tank: 35 Gallon

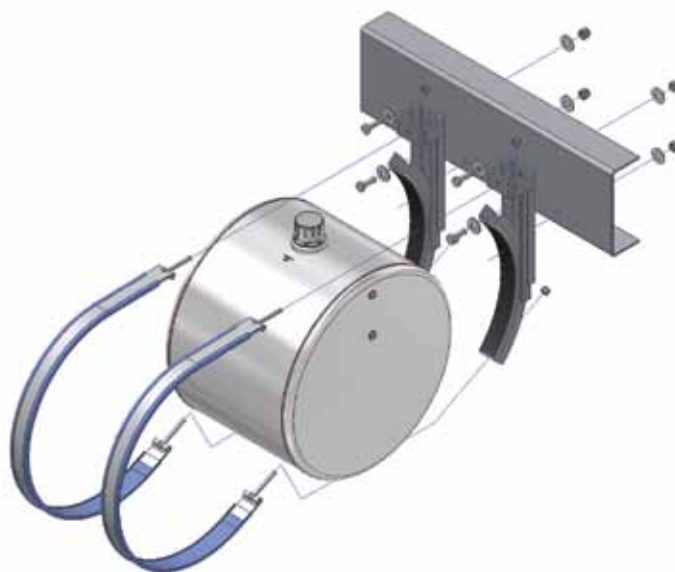
Tank Size: 24" diameter x 19" long

Shipping Weight: 32#

Mounting Kit Weight: 44#



Roll-formed cylindrical aluminum tank, domed ends are die stamped. Bright mill finished. Includes (1) 2" NPT heavy duty machined suction port and (1) 1-1/4" NPT heavy duty machined return line port. Both ports are rear facing for easy and convenient wet line installation. Filter/breather assembly - including 40 micron filter/breather cap (chain mounted) with nylon strainer and bayonet closure. Oil level and temperature indicator gauge (can be mounted on either end of tank.) Includes AMK-624-C Mounting kit: two frame mounted powder coated J-Brackets (rubber shielded) and two rubber shielded, powder coated carbon steel strap assemblies. Unit is packaged in one carton and shipped UPS. Also available in steel.



Specialty Hydraulic Tanks

Model A4500-2S90-ST

Specialty Aluminum Saddlemount Tank: 50 Gallon

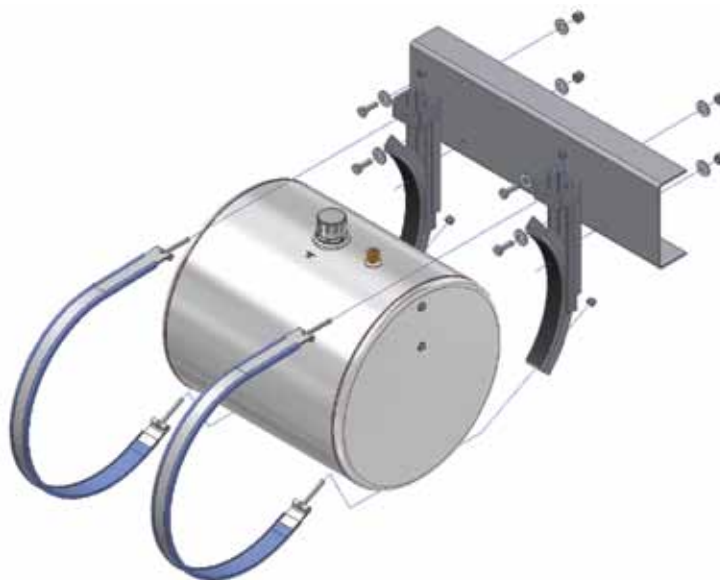
Tank Size: 24" diameter x 27" long

Shipping Weight: 40#

Mounting Kit Weight: 44#

Roll-formed cylindrical aluminum tank, domed ends are die stamped. Bright mill finished. Includes (2) 2" NPT heavy duty machined ports. Both ports are rear facing for easy and convenient wet line installation. Filter/breather assembly - including 40 micron filter/breather cap (chain mounted) with nylon strainer and bayonet closure. Oil level and temperature indicator gauge (can be mounted on either end of tank.) Includes AMK-624-C Mounting kit: two frame mounted powder coated J-Brackets (rubber shielded) and two rubber shielded, powder coated carbon steel strap assemblies. Unit is packaged in one carton and shipped UPS.

Also available in 75 gallons and in steel.





Hydraulic Mounting Products

Saddlemount - Mounting Kits

AMK-624-C & AMK-624-S

For 25, 35, 50, & 100 Gallon Capacity Tanks

AMK-624-C

Weight: 44#



AMK-624-C Carbon Mounting kit is shipped standard with all Steel and Aluminum Saddlemount tanks with a gallon capacity of less than 75 gallon. This kit includes: Two frame mount powder coated J-brackets (rubber shielded) and two rubber shielded, powder coated carbon steel strap assemblies. Kit can be purchased separately.

AMK-624-S

Weight: 44#

AMK-624-S Stainless Mounting kit is available as an upgrade option from the standard AMK-624-C. This kit is usable with Saddlemount tanks that are less than 75 gallons. Mounting kit includes: two frame mount powder coated J-brackets (rubber shielded) and two rubber shielded, stainless steel strap assemblies. Kit can be purchased separately.

CHANGES MAY BE MADE TO PRODUCT WITHOUT NOTICE.

TO SEE OUR FULL LINE OF DRAWINGS GO TO WWW.AMERICANMOBILEPOWER.COM

Order No.	Weight	Description	Page #
AMK-624	16#	"J" Bracket Only	37
ASA-355	7#	Carbon Steel Strap Assembly *for AMK-624-C	37
ASA-355-S	5#	Stainless Steel Strap Assembly *for AMK-624-S	37

NOTE: The 100 gallon Saddlemount Tanks (A35100-ST and A45100-ST) are supplied with two of the above kits.

Hydraulic Mounting Products

Saddlemount - Mounting Kits

AMK-624-C/3 & AMK-624-S/3

For 75 Gallon Saddlemount Tanks

AMK-624-C/3

Carbon Mounting Kit: 75 Gal.

Weight: 63#

AMK-624-C/3 Carbon Mounting kit is shipped standard with the A3575 and the A4575; 75 gallon capacity saddlemount hydraulic tanks. This mounting kit includes: Three frame mount powder coated J-brackets (rubber shielded) and three rubber shielded, powder coated carbon steel strap assemblies. Kit can be purchased separately.

AMK-624-S/3

Stainless Mounting Kit: 75 Gal.

Weight: 63#

AMK-624-S Stainless Mounting kit is available as an upgrade option from the standard AMK-624-C. This kit is usable with Saddlemount tanks that are of 75 gallon capacity. Mounting kit includes: three frame mount powder coated J-brackets (rubber shielded) and three rubber shielded, stainless steel strap assemblies. Kit can be purchased separately.



CHANGES MAY BE MADE TO PRODUCT WITHOUT NOTICE.

TO SEE OUR FULL LINE OF DRAWINGS GO TO WWW.AMERICANMOBILEPOWER.COM

Order No.	Weight	Description	Page #
AMK-624	16#	"J" Bracket Only	37
ASA-355	7#	Carbon Steel Strap Assembly *for AMK-624-C	37
ASA-355-S	5#	Stainless Steel Strap Assembly *for AMK-624-S	37

American Wet Tank System

Model A3500 & A4500

Also Includes: A3525, A3535, A3575, A35100-ST
A4525, A4535, A4575, A45100-ST

A3575 - A4575

75 Gallon Units

Require Three Bracket Assemblies

Use Kit Number:

AMK-624-C/3 (Carbon Steel)

AMK-624-S/3 (Stainless)

A35100-ST - A45100-ST

100 Gallon Units

Require Four Bracket Assemblies

Use 2 of the following:

AMK-624-C (Carbon Steel)

AMK-624-S (Stainless)





American Wet Tank System

Model A3500 & A4500

Mounting Kit Contents: Part Number AMK-624-C (carbon steel)
Part number AMK-624-S (stainless steel)

Qty	Description
2	"J" brackets - powder coated, radius is rubber lined (affixed)
2	2" wide strap assemblies including (4) ny-loc nuts

Materials Required To Complete Installation:

Qty	Description
4	5/8" - grade 5 bolts (length determined by installer)
4	Ny-Loc nuts - 5/8" diameter
8	5/8" washers

Pre-Packaged Kit Includes:

Steel or aluminum tank assembly (25 gallon through 100 gallon) with three 1-1/4" NPT ports (75 gallon have 1-1/2" NPT ports), (100 gallon have 2" NPT ports), the 50 gallon and larger units include auxiliary mushroom vent in tank for increased air exchange; each is provided with a filler/breather assembly-including 40 micron filter/breather cap (chain mounted) with nylon strainer basket and bayonet closure; all ports in each unit are internally diffused (Except 100 gallon); one port plug provided; all steel parts are powder-coated black; saddlemount bracket and strap assemblies are rubber shielded.

INSTRUCTIONS:

1. Position the top of the cradle bracket flush with truck frame rail.
2. Attach brackets to frame rail with at least (2) 5/8", grade 5 bolts (per bracket).

Note: Brackets should be placed within 2" from ends of tank, 75 gallon tanks require an extra bracket (and strap) placed on either side of fill cap, at least 1/2" from weld. 100 gallon tanks require two extra brackets (and straps), spaced evenly and at least 1/2" from weld.

3. Place tank against brackets and firmly tighten nuts to straps (not more than 25 ft-lbs of torque.)
4. Install plumbing. All plumbing and fitting connections attached to tanks must be properly supported into same moving plane as the tank in order to keep plumbing and fittings from creating a metal fatigue fracture outside of port weld. We suggest using a hose support mount (which we offer.)

STEEL POLYETHYLENE ALUMINUM STEEL POLYETHYLENE ALUMINUM STEEL

STEEL POLYETHYLENE ALUMINUM STEEL POLYETHYLENE ALUMINUM STEEL POLYETHYLENE ALUMINUM STEEL POLYETHYLENE ALUMINUM STEEL

STEEL POLYETHYLENE ALUMINUM STEEL POLYETHYLENE ALUMINUM STEEL POLYETHYLENE ALUMINUM STEEL POLYETHYLENE ALUMINUM STEEL

A3150



A3250



A3300



A3400



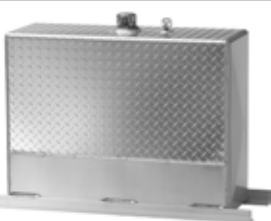
A3000



A3070



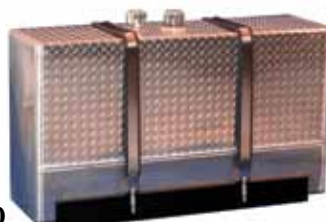
A4000



A2000



A4070



A3525



A4525



A4150



A3535



A4535



A3500



A4500



A3575



A4575



AMERICAN



MOBILE POWER

• CALL TODAY •

• WE SHIP •

JUST IN TIME!

1-800-634-8265

STEEL POLYETHYLENE ALUMINUM STEEL POLYETHYLENE ALUMINUM STEEL