



BRAND
HYDRAULICS Co.

Made in the Heartland of America
Serving the World

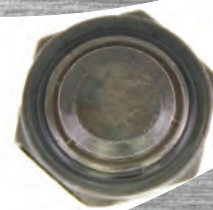
Engineering & Manufacturing Solutions

Series 83

Non-Adjustable Flow Control

Specifications:

- Rated for 0-10 gpm (0-37.9 lpm).
- Rated for 3000 psi (207 bar).
- Weighs 1/4 lb. (0.11 kg).
- 30-Micron Filtration Recommended.
- Port size #8 SAE (3/4-16).



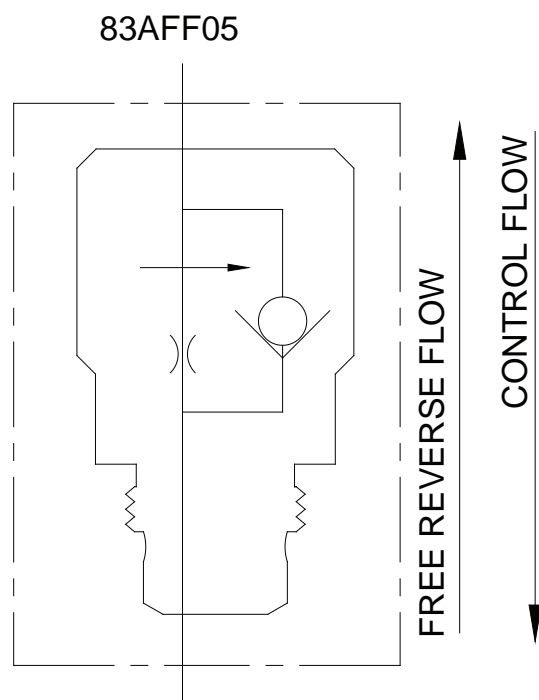
ISO 9001:2008 WITH DESIGN
Certificate #02.002.1



402.344.4434 • www.brand-hyd.com

Series 83

Non-Adjustable Flow Control

**MATERIALS:**

- Black Oxide Steel Body.
- Heat Treated Steel Spool.
- Buna N O'Rings (Standard).

FEATURES:

- EVERY SERIES 83 IS TESTED for max. flow, and pressure compensation.
- FREE REVERSE FLOW allows fluid to move freely in one direction and controlled in the other direction.

SERIES 83 – GENERAL INFORMATION:

The Brand, Series 83 is a two port, non-adjustable, pressure compensated, inline flow control, with free reverse flow. The amount of flow is determined by the diameter of the orifice in the compensator piston. The spring and piston are held in place when it is connected to a #8 SAE male fitting. This flow control is inexpensive and gives the customer the ability to change the flow rate by swapping the piston with another that has a different orifice size.

SERIES 83 – EXAMPLES OF COMMON MODEL CODES:

83AFF05.....#8 SAE ports and a max flow of 5 gpm (18.9 lpm).

83AFF10A.....#8 SAE ports, a max flow of 10 gpm (37.9 lpm) and a #8 SAE adapter.

83AFF__.....#8 SAE ports, indicate flow in gpm, as per example:

83AFF03=3 gpm (11.4 lpm).

DIMENSIONAL DATA:

DIMENSIONAL DATA (inches & [millimeters]):

