

General Description

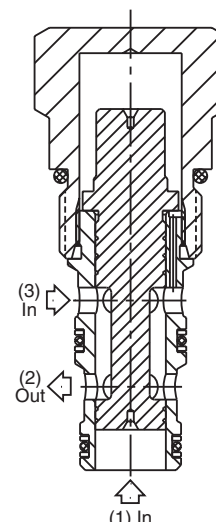
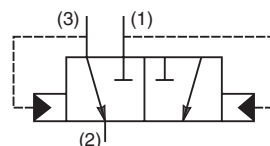
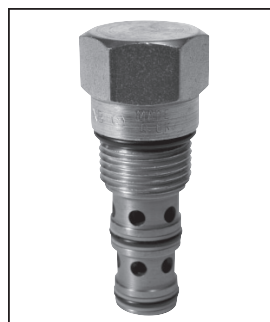
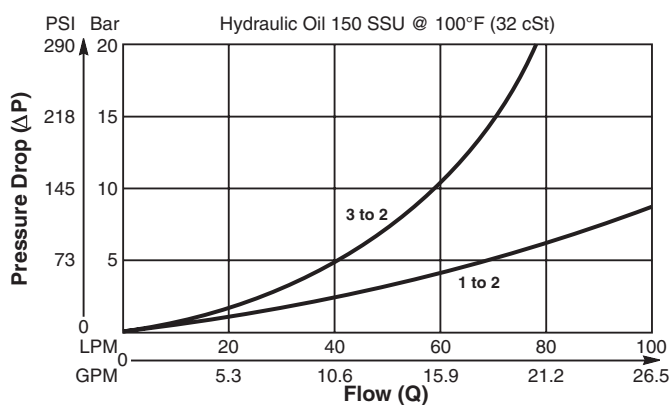
Two Position, Three Way Shuttle Valve.
For additional information see Technical Tips on pages SH1-SH2.

Features

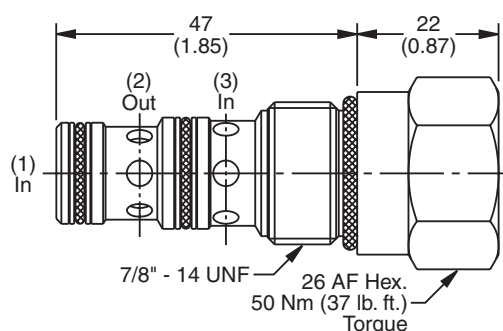
- High flow capacity
- Used as automatic brake release valve on motors
- Hardened working parts for maximum durability
- All external parts zinc plated

Performance Curve

Pressure Drop vs. Flow (Through cartridge only)



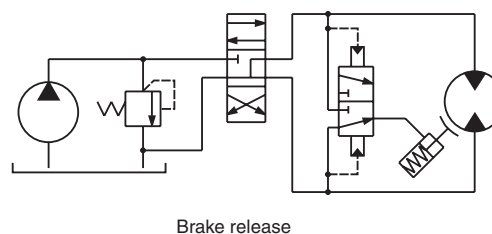
Dimensions



Specifications

Rated Flow	90 LPM (24 GPM)
Nominal Flow @ 7 Bar (100 PSI)	50 LPM (13 GPM)
Maximum Inlet Pressure	420 Bar (6000 PSI)
Cartridge Material	All parts steel. All operating parts hardened steel.
Operating Temp. Range/Seals	-40°C to +93.3°C (Nitrile, Buna-N) (-40°F to +200°F) -31.7°C to +121.1°C (Fluorocarbon) (-25°F to +250°F)
Fluid Compatibility/Viscosity	Mineral-based or synthetic with lubricating properties at viscosities of 45 to 2000 SSU (6 to 420 cSt)
Filtration	ISO code 16/13, SAE Class 4 or better
Approx. Weight	.14 kg (.31 lbs.)
Cavity	C10-3 (See BC Section for more details)

Application



Ordering Information

K04D3		Seals	Body Material	Port Size
Shuttle Valve				
Code	Seals / Kit No.	Code	Port Size	Body Part No.
N	Nitrile, Buna-N / (SK30505N-1)	Omit	Cartridge Only	
V	Fluorocarbon / (SK30505V-1)	4P	1/4" NPTF	(B10-3-*4P)
		6P	3/8" NPTF	(B10-3-*6P)
		8P	1/2" NPTF	(B10-3-*8P)
		6T	SAE-6	(B10-3-*6T)
		8T	SAE-8	(B10-3-*8T)
		6B	3/8" BSPG	(B10-3-6B)†
		8B	1/2" BSPG	(B10-3-*8B)
Code	Body Material			
Omit	Steel			
A	Aluminum			

* Add "A" for aluminum, omit for steel.
† Steel bodies only.