



BRAND
HYDRAULICS Co.

Made in the Heartland of America
Serving the World

Engineering & Manufacturing Solutions

SHV

Shuttle Valve

Specifications:

- Pressure rating 3000 psi (207 bar).
- See "GEN. INFO." for flow, pressure drop and porting.
- Weighs – SHV50C 1.25 lbs (.57 kg).
- SHV25 0.5 lbs (.23 kg).
- 30 Micron filtration recommended.



SHV25



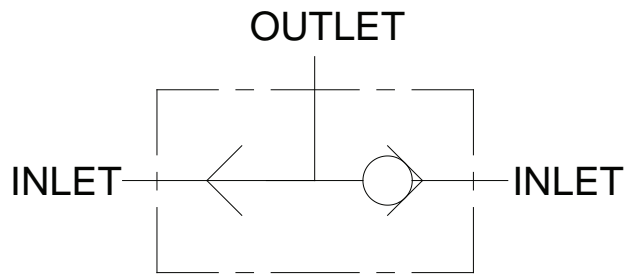
SHV50C



ISO 9001:2008 WITH DESIGN
Certificate #02.002.1



402.344.4434 • www.brand-hyd.com



SHV25



SHV50C

MATERIALS:

- Cast Iron Body
- Buna N O'Rings
- Hardened Steel Ball

FEATURES:

- HARDENED STEEL BALL for wear resistance and greater durability.
- BALL TYPE CONSTRUCTION for minimal leakage.
- LOW AND HIGH FLOW CAPACITY for any type of application.

SHV – GENERAL INFORMATION:

The Brand, shuttle valve has two inlet ports and one outlet port. The purpose of the shuttle valve is to accept flow from the inlet with the higher pressure and to route it to the outlet, while keeping the inlet flows isolated from one another. We manufacture shuttle valves in two sizes SHV50C and SHV25. The SHV50C has 1/2" NPT ports, capable of 0-15 gpm (0-57 lpm) and a peak pressure drop of 15 psi (1.0 bar). SHV25 has 1/4" NPT ports, capable of 0-5 gpm (0-19 lpm) and a peak pressure drop of 50 psi (3.4 bar).

DIMENSIONAL DATA: Inches & [millimeters]

SHV

