

# SOLENOID CONTROLLED PILOT OPERATED RELIEF VALVE

## SRF SERIES



### FEATURES

•SRF-T/G valve is the combination of solenoid operated directional control valve and a RF-G relief valve in one integrated body to provide a wide variety of pressure control possibilities. Solenoid control permits convenient electrical selection of system pressures. Selection for pressure or vent, either of two pressures, or two pressures and vent, or one of three pressures can be achieved by proper selection of the valves listed below.

### Model Code

**SRF – G 06 – 1PN – 1 – A120 – 10 – \*\* – A1 – N**

1 2 3 4 5 6 7 8 9 10

#### 1 Series

**SRF:** Solenoid Controlled  
Pilot Operated Relief Valve

#### 2 Mounting Style

**G:** Subplate Mounted  
**T:** Threaded Body

#### 3 Interface

**04:** "G" Subplate Mount Only  
**06:** "G" Subplate Mount or  
"T" 3/4" NPT Threaded Body  
**10:** "G" Subplate Mount Only

#### 4 Function

**1PN:** Normally Vented  
**1NP:** Energized to Vent  
**2P:** Dual Pressure Adjusting  
Ranges  
**2PN:** Dual Pressure and Vent  
**3P:** Three Pressure Adjusting  
Ranges

#### 5 Pressure Adj. Range

**1:** 100-1000 PSI (7-69 BAR)  
**2:** 500-2000 PSI (35-138 BAR)  
**3:** 1000-3550 PSI (69-245 BAR)

#### 6 Coil Voltage

**A110:** AC110V, 60Hz; AC100V, 50Hz  
**A120:** AC120V, 60Hz; AC110V, 50Hz  
**A220:** AC220V, 60Hz; AC200V, 50Hz  
**A240:** AC240V, 60Hz; AC220V, 50Hz  
**R110:** AC110V, 50/60Hz  
**R120:** AC120V, 50/60Hz  
**R220:** AC220V, 50/60Hz  
**R240:** AC240V, 50/60Hz  
**D12 :** DC12V  
**D24 :** DC24V

#### 7 Electric Connection

**10:** Junction Box with  
Indicator Light  
**20:** DIN 43650 Connector  
with Indicator Light  
**31:** Lead Wire (DC Only)  
**41:** Dual Spade (DC Only)  
SAE J858A

#### 8 Design Number

#### 9 Solenoid Valve Orientation

**No Code:** Standard  
**A1:** Rotated 90°  
(See Installation Drawing)

#### 10 Ports

**No Code:** For "G" Subplate Style  
**N:** 3/4" NPT Ports for  
"T" Threaded Body Style

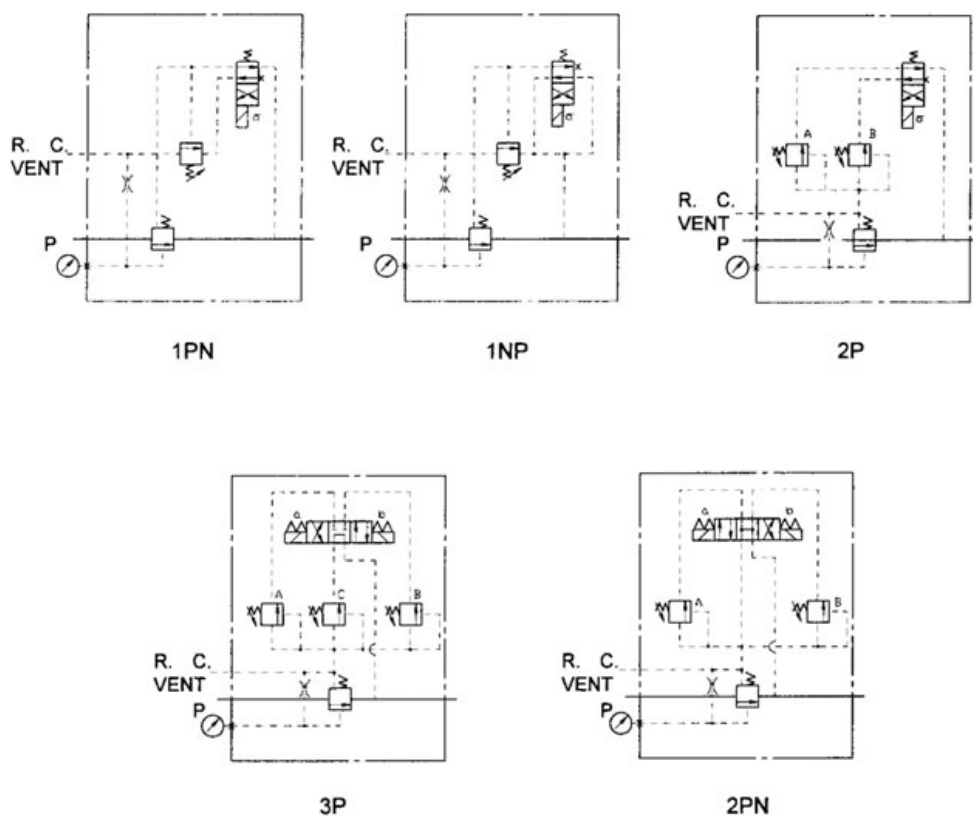
# SOLENOID CONTROLLED PILOT OPERATED RELIEF VALVE

## SRF SERIES

### SPECIFICATIONS

MODEL	MAX. PRESSURE BAR (PSI)	RATED FLOW LPM(GPM)	PRESSURE ADJ. RANGE BAR (PSI)
SRF-G04	245 (3550)	100(26.4)	1: 7-69 (100-1000)
SRF-G/T06		200(52.8)	2: 35-138(500-2000)
SRF-G10		400(105.6)	3: 69-245(1000-3550)

### SYMBOLS & FUNCTION TABLES



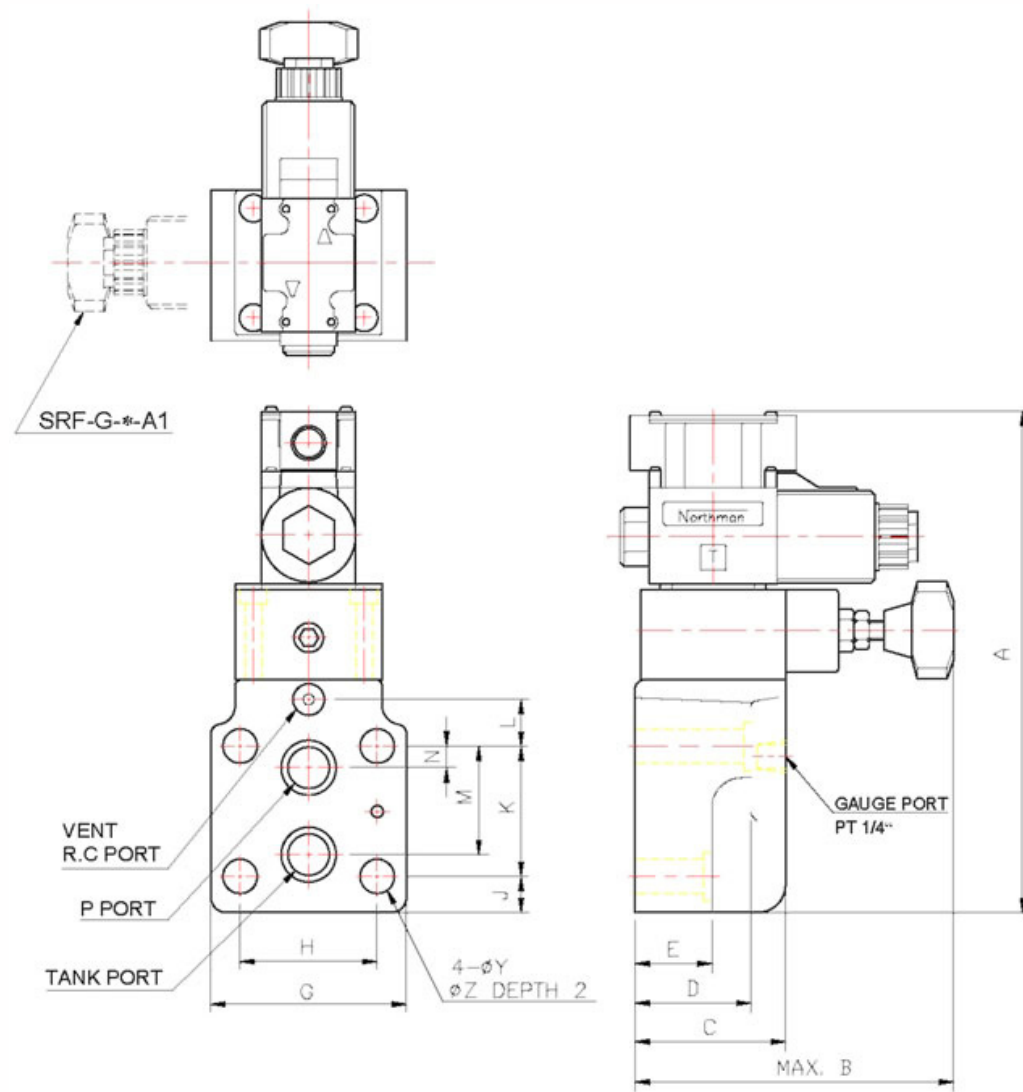
MODEL	INPUT		OUTPUT
	SOL b	SOL a	
1PN	OFF	NONE	VENTED
	ON		ADJUSTABLE PRESSURE
1NP	NONE	OFF	ADJUSTABLE PRESSURE
		ON	VENTED
2P	OFF	NONE	ADJUSTABLE PRESSURE AT A
	ON		ADJUSTABLE PRESSURE AT B
2PN	OFF	OFF	VENTED
	ON	OFF	ADJUSTABLE PRESSURE AT A
	OFF	ON	ADJUSTABLE PRESSURE AT B
3P	OFF	OFF	ADJUSTABLE PRESSURE AT C
	ON	OFF	ADJUSTABLE PRESSURE AT A
	OFF	ON	ADJUSTABLE PRESSURE AT B

# SOLENOID CONTROLLED PILOT OPERATED RELIEF VALVE

## SRF SERIES

### DIMENSIONS

SRF-G\*-1PN/1NP



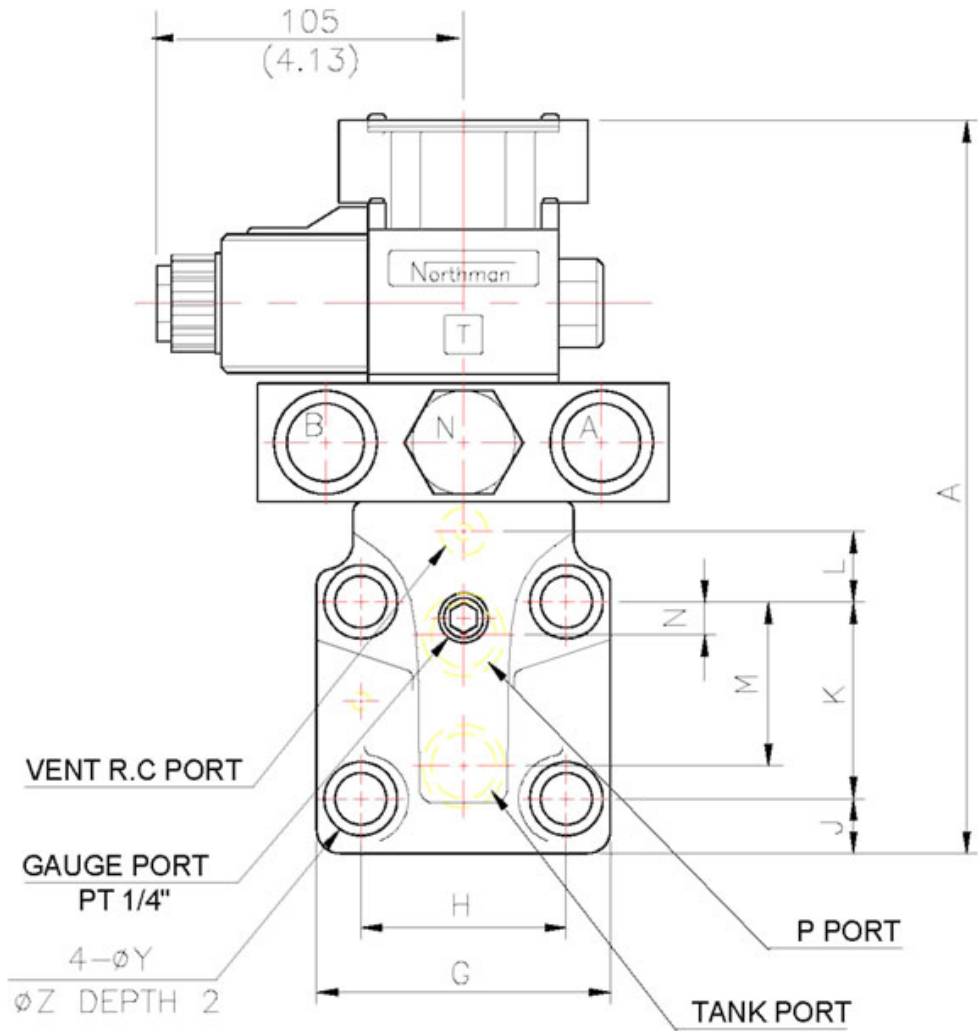
MODEL	A	B	C	D	E	G	H	J	K
SRF-G04 SERIES	228.5 (9)	175 (6.89)	78 (3.07)	78 (3.07)	57 (0.67)	82 (3.23)	53.8 (2.12)	21.5 (0.89)	53.8 (2.12)
SRF-G06 SERIES	254 (9.61)	175 (6.85)	78 (3.07)	60 (2.36)	40 (0.67)	102 (4.09)	70 (2.76)	19 (0.67)	66.7 (2.63)
SRF-G10 SERIES	281 (11.06)	184 (7.24)	87.5 (3.45)	67 (2.64)	47 (0.71)	124 (4.88)	82.6 (3.25)	20 (0.71)	88.9 (3.5)

MODEL	L	M	N	Y	Z	WEIGHT KGS(LBS)	SUBPLATE TYPE
SRF-G04 SERIES	0 (0)	47.5 (2.13)	22 (0.87)	13.5 (0.53)	21 (0.83)	7.5 KGS (16.5 LBS)	MF-04
SRF-G06 SERIES	23.8 (0.94)	55.5 (2.19)	11 (0.43)	17.5 (0.69)	26 (1.02)	8.0 KGS (17.6 LBS)	MF-06
SRF-G10 SERIES	31.8 (1.25)	76.2 (3.00)	12.7 (0.50)	22 (0.85)	32 (1.26)	25 KGS (55.1 LBS)	MF-10

SOLENOID CONTROLLED PILOT OPERATED RELIEF VALVE  
SRF SERIES

DIMENSIONS

SRF-G06/G10-2P



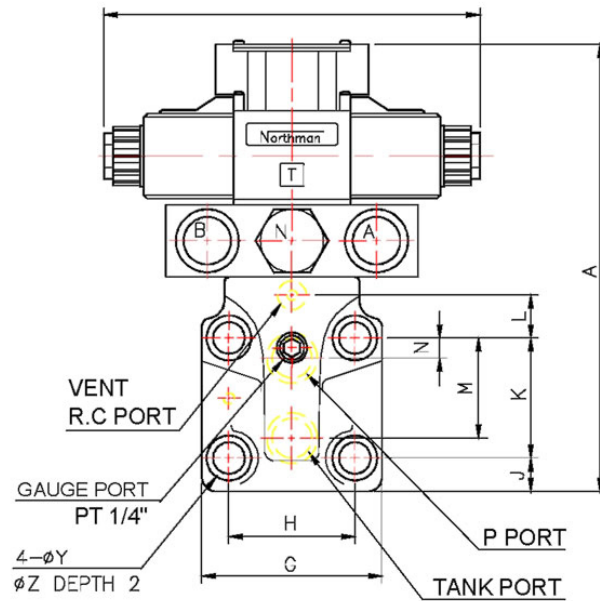
MODEL	A	G	H	J	K	L	M	N	Y	Z	WEIGHT KGS(LBS)	SUBPLATE TYPE
SRF-G06 SERIES	244 (9.61)	104 (4.09)	70 (2.76)	16.9 (0.67)	66.7 (2.63)	23.8 (0.94)	55.5 (2.19)	11 (0.43)	17.5 (0.69)	26 (1.02)	10 KGS (22.0LBS)	MF-06
SRF-G10 SERIES	281 (11.06)	124 (4.88)	82.6 (3.25)	18 (0.71)	88.9 (3.5)	31.8 (1.25)	76.2 (3.00)	12.7 (0.50)	21.5 (0.85)	32 (1.26)	27 KGS (59.5LBS)	MF-10

# SOLENOID CONTROLLED PILOT OPERATED RELIEF VALVE

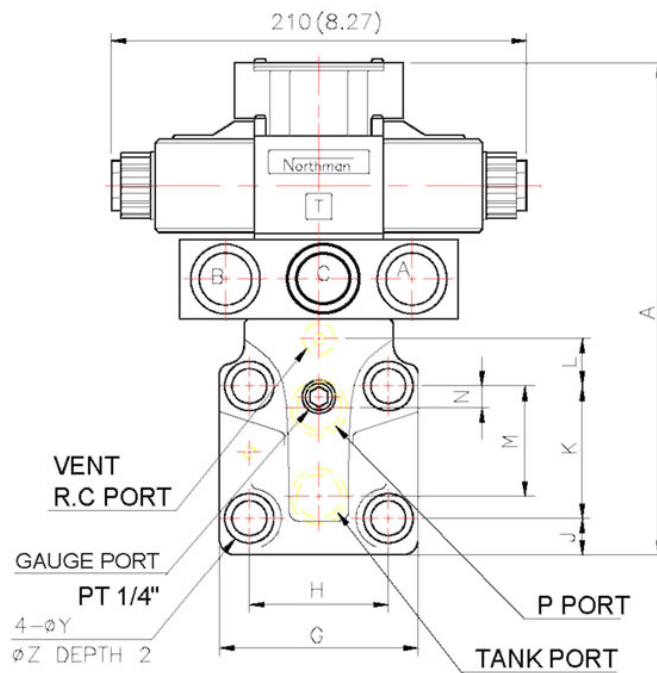
## SRF SERIES

### DIMENSIONS

SRF-G06/G10-2PN



SRF-G06/G10-3P



MODEL	A	G	H	J	K	L	M	N	Y	Z	WEIGHT KGS(LBS)	SUBPLATE TYPE
SRF-G06 SERIES	244 (9.61)	104 (4.09)	70 (2.76)	16.9 (0.67)	66.7 (2.63)	23.8 (0.94)	55.5 (2.19)	11 (0.43)	17.5 (0.69)	26 (1.02)	12 KGS (26.4LBS)	MF-06
SRF-G10 SERIES	281 (11.06)	124 (4.88)	82.6 (3.25)	18 (0.71)	88.9 (3.5)	31.8 (1.25)	76.2 (3.00)	12.7 (0.50)	21.5 (0.85)	32 (1.26)	29 KGS (63.9LBS)	MF-10

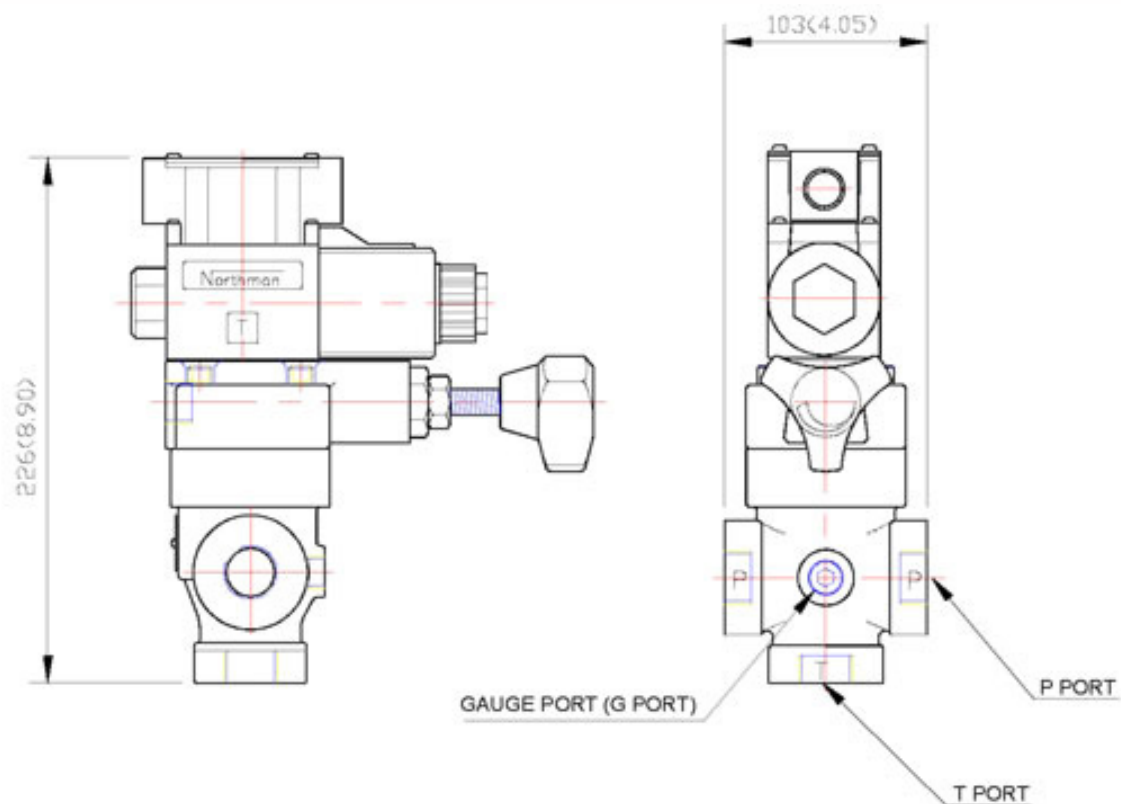


## SOLENOID CONTROLLED PILOT OPERATED RELIEF VALVE SRF SERIES

### DIMENSIONS

SRF-T06-1PN/1NP

UNIT: mm(inch) WEIGHT: 8kgs(17.6lbs)



SRF-T06-2P/2PN/3P

