

SUBPLATE FOR SV/SCV PRV/PRCV



FEATURES

-

Model Code

SVM 03 – 03 – N

1

2

3

4

1 Series

SVM: Subplate for
SV-G**, SCV-G**
PRV-G**, PRCV-G**

3 Ports

03: 3/8" NPT
06: 3/4" NPT
10: 1-1/4" NPT

2 Valve Size

03: G03
06: G06
10: G10

4 Port Threads

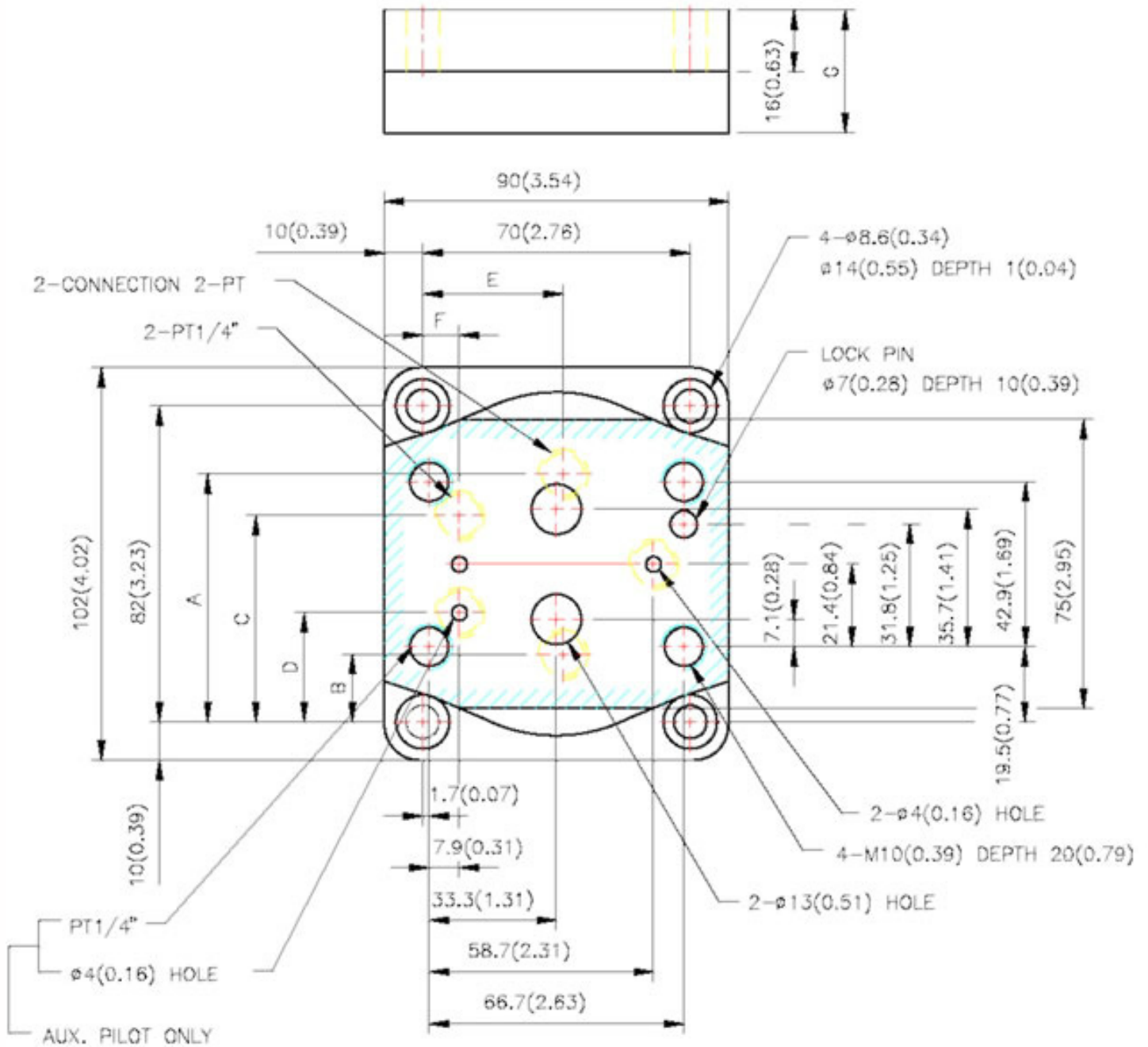
N: NPT

SUBPLATE FOR SV/SCV PRV/PRCV

DIMENSIONS

SVM-03-**

ISO 5781-AG-06-2-A



THIS SUBPLATE IS USED FOR SV/SCV-G03, PRV/PRCV-G03

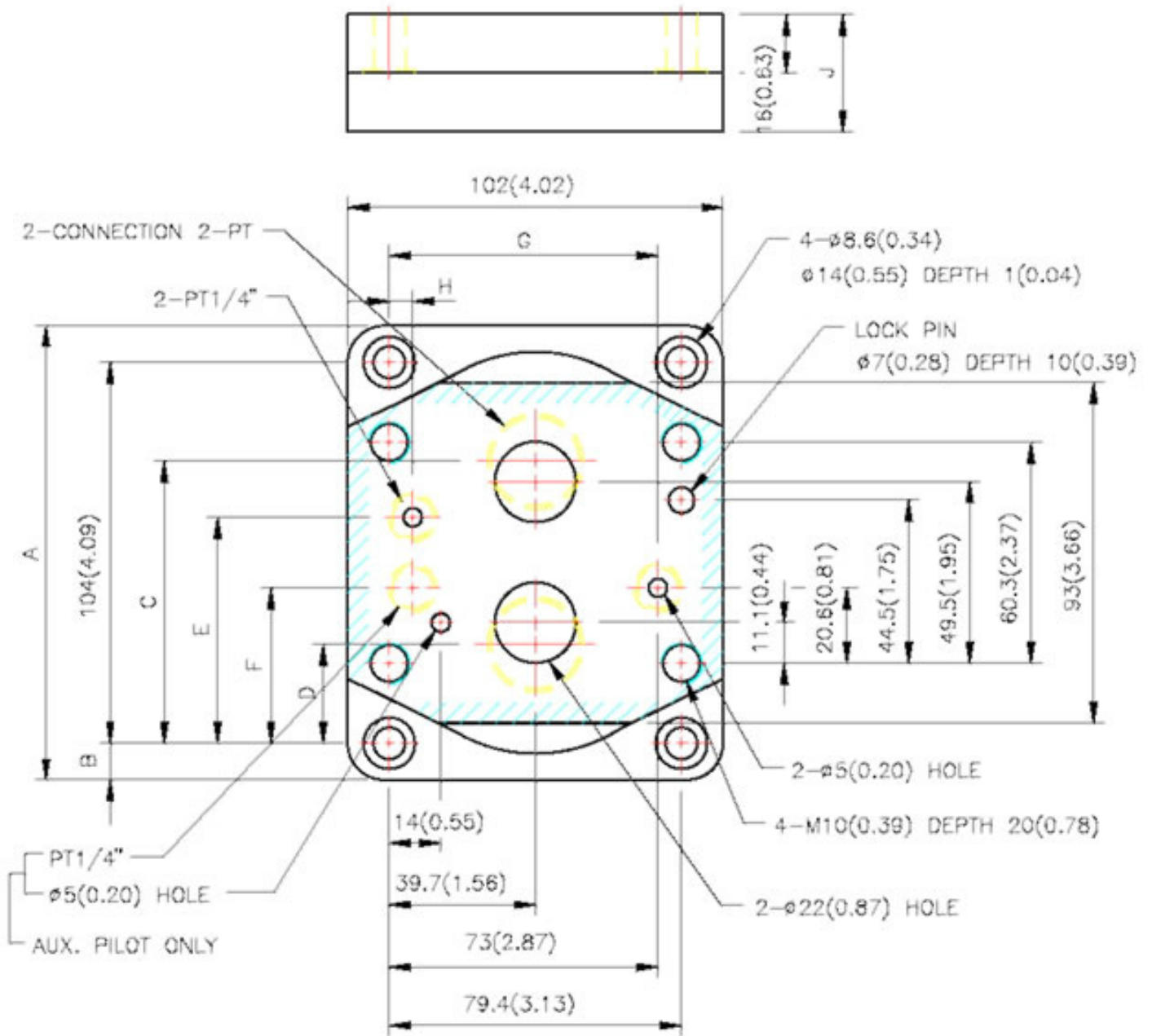
SUBPLATE	PORT PT	A	B	C	D	E	F	G
SVM-03-03	3/8"	61 (2.40)	21 (0.83)	40.9 (1.61)	-	35 (1.38)	9.6 (0.38)	32 (1.26)

SUBPLATE FOR SV/SCV PRV/PRCV

DIMENSIONS

SVM-06-**

ISO 5781-AH-08-2-A



THIS SUBPLATE IS USED FOR SV/SCV-G06, PRV/PRCV-G03

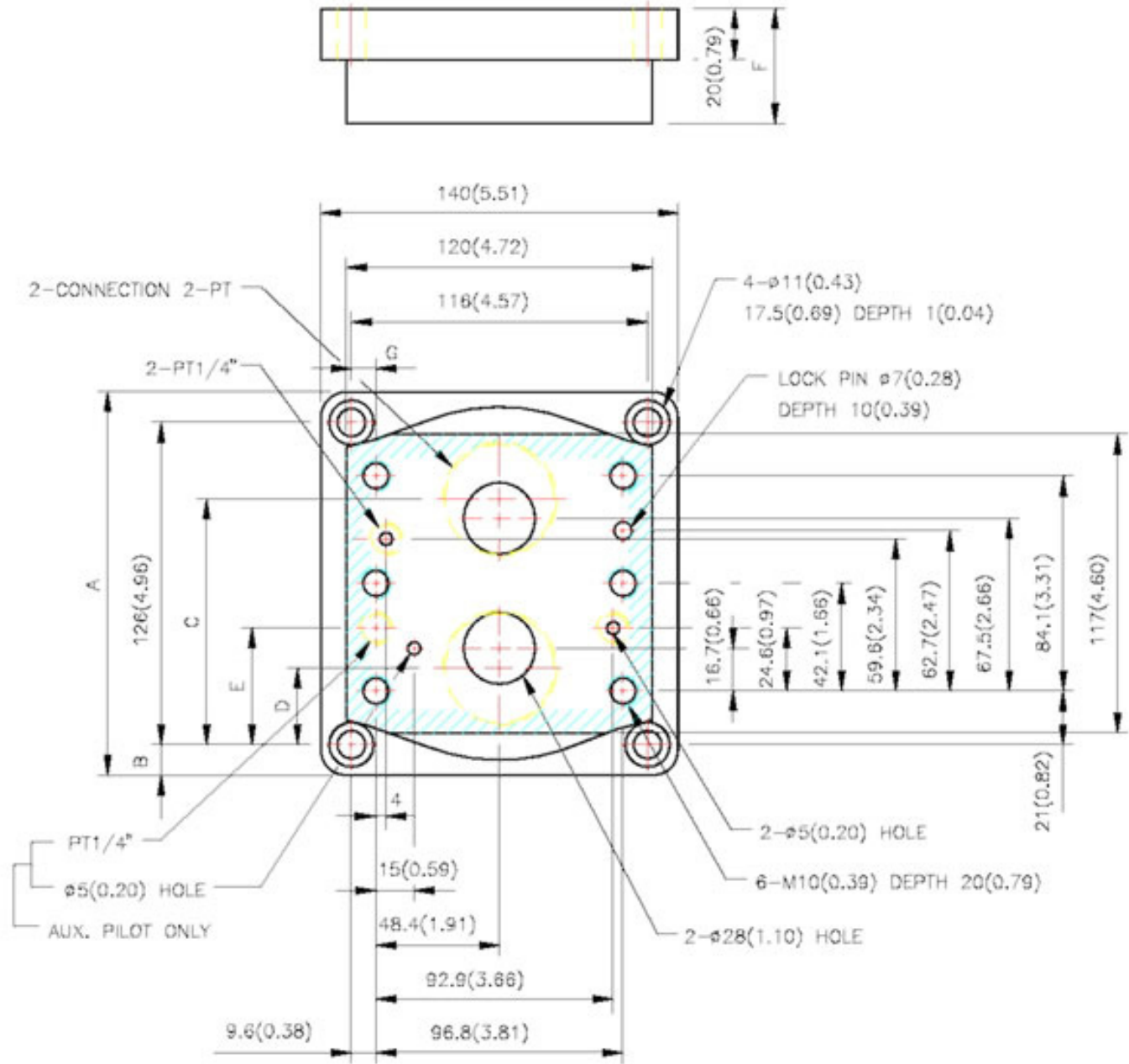
SUBPLATE	PORT PT	A	B	C	D	E	F	G	H	J
SVM-06-06	3/4"	124 (4.88)	10 (0.39)	77 (3.03)	27 (1.06)	61.7 (2.43)	-	73 (2.87)	6.4 (0.25)	36 (1.42)

SUBPLATE FOR SV/SCV PRV/PRCV

DIMENSIONS

SVM-10-**

ISO 5781-AJ-10-2-A



SUBPLATE	PORT PT	A	B	C	D	E	F	G
SVM-10-10	1-1/4"	150 (5.91)	12 (0.47)	96 (3.78)	30 (1.18)	-	45 (1.77)	13.6 (0.54)