

Technical Information

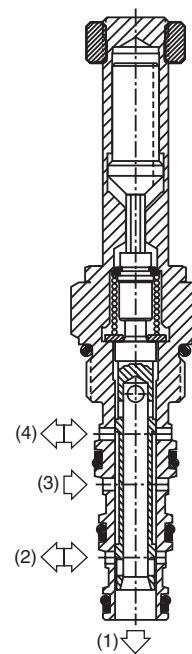
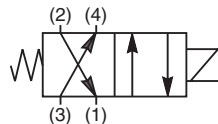
- CV** Check Valves
- SH** Shuttle Valves
- LM** Load/Motor Controls
- FC** Flow Controls
- PC** Pressure Controls
- LE** Logic Elements
- DC** Directional Controls
- MV** Manual Valves
- SV** Solenoid Valves
- PV** Proportional Valves
- CE** Coils & Electronics
- BC** Bodies & Cavities
- TD** Technical Data

General Description

4-Way, 2 Position, Reversing Spool Valve. For additional information see Technical Tips on pages SV1-SV6.

Features

- Designed to operate double and single acting cylinders, pilot circuits and bi-directional motors, etc.
- High flow capacity with reduced space requirements
- High pressure capacity to 350 Bar (5000 PSI)
- One piece cartridge housing ensures internal concentricity
- Coil: Waterproof, hermetically sealed, requires no O'Rings; Symmetrical coil can be reversed without affecting performance.
- Manual override available

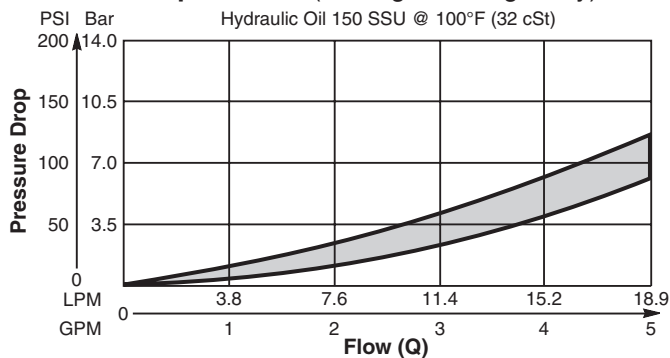


Specifications

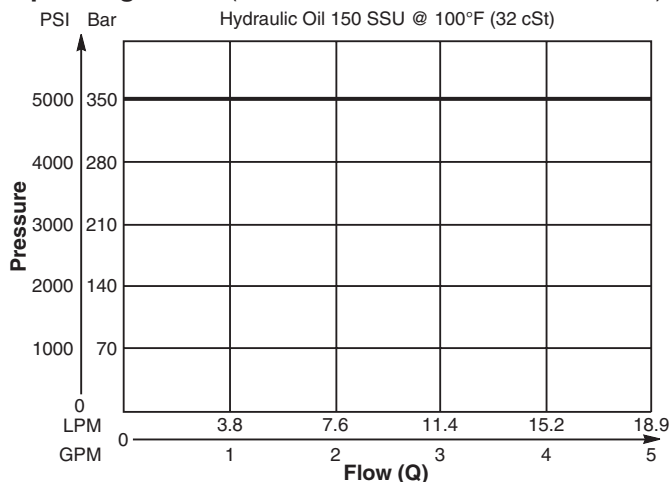
| | |
|---------------------------------------|--|
| Rated Flow (At 70 PSI ΔP) | 19 LPM (5 GPM) |
| Maximum Inlet Pressure | 350 Bar (5000 PSI) |
| Leakage at 150 SSU (32 cSt) | |
| Minimum Operating Voltage | 85% of rated voltage at 20°C (72°F). |
| Cartridge Material | All parts steel. All operating parts hardened steel. |
| Operating Temp. Range/Seals | -40°C to +93.3°C (Nitrile) (-40°F to +200°F) -31.7°C to +121.1°C (Fluorocarbon) (-25°F to +250°F) |
| Fluid Compatibility/ Viscosity | Mineral-based or synthetic with lubricating properties at viscosities of 45 to 2000 SSU (6 to 420 cSt) |
| Filtration | ISO Code 16/13, SAE Class 4 or better |
| Approx. Weight | .30 kg (.66 lbs.) |
| Cavity | C08-4 (See BC Section for more details) |

Performance Curves

Pressure Drop vs. Flow (Through cartridge only)

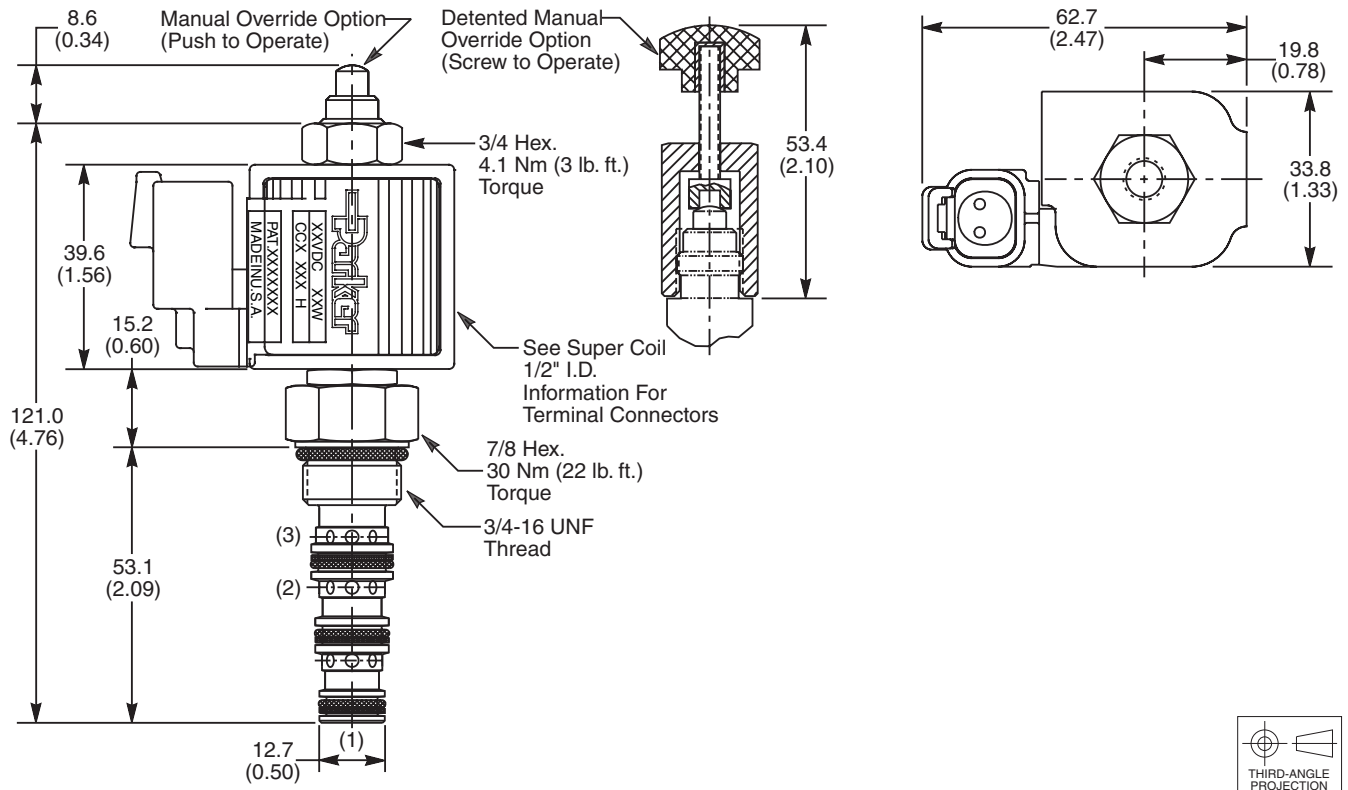


Operating Limits (Measured at 75% of Nominal Current)

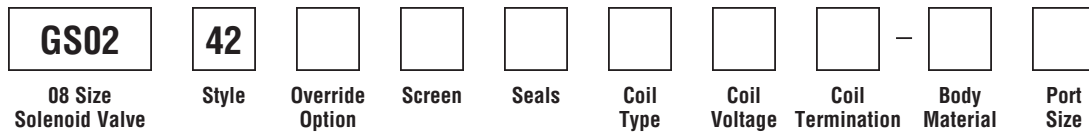


Technical Information

Dimensions Millimeters (Inches)



Ordering Information



| Code | Style |
|------|---------------------------|
| 42 | High Pressure ('SP' Coil) |

| Code | Seals / Kit No. |
|------|--------------------------------------|
| N | Nitrile / Buna-N (Std.) (SK30078N-1) |
| V | Fluorocarbon / (SK30078V-1) |

| Code | Coil Termination |
|------|--------------------|
| Omit | Without Coil |
| C | Conduit With Leads |
| D | DIN Plug Face |
| A | Amp Jr. Timer* |
| S | Dual Spade* |
| L | Dual Lead Wire* |
| LS | Sealed Lead Wire* |
| H | Molded Deutsch* |

| Code | Body Material |
|------|---------------|
| Omit | Steel |
| A | Aluminum |

| Code | Override Options |
|------|--------------------------|
| 0 | None |
| 1 | Manual Override |
| 2 | Detented Part No. 900690 |

| Code | Coil Type |
|------|-----------------------|
| Omit | Without Coil |
| SP | Super Coil - 19 Watts |

| Code | Port Size | Body Part No. |
|------|----------------|---------------|
| Omit | Cartridge Only | |
| 6T | SAE-6 | (B08-4-*6T) |
| 6B | 3/8" BSPG | (B08-4-*6B) |

* Add "A" for aluminum, omit for steel.

| Code | Screen |
|------|---------------|
| 0 | Not Available |

| Code | Coil Voltage |
|------|--------------------|
| Omit | Without Coil |
| D012 | 12 VDC |
| D024 | 24 VDC |
| A120 | 120 VAC, 60/50 Hz |
| A240 | 240 VAC, 60/50 Hz* |

*22 Watts

See Super Coil 1/2" I.D.
*DC Only