

## FLOW CONTROLS SUBPLATE

---



### FEATURES

---

#### Model Code

**TVM 03 – 03 – N**

1

2

3

4

**1 Series**

**TVM:** Subplate for Non-ISO Standard TV/TCV

**2 Valve Size**

**03:** 3/8"

**06:** 3/4"

**10:** 1-1/4"

**3 Port Size**

**03:** 3/8" NPT

**06:** 3/4" NPT

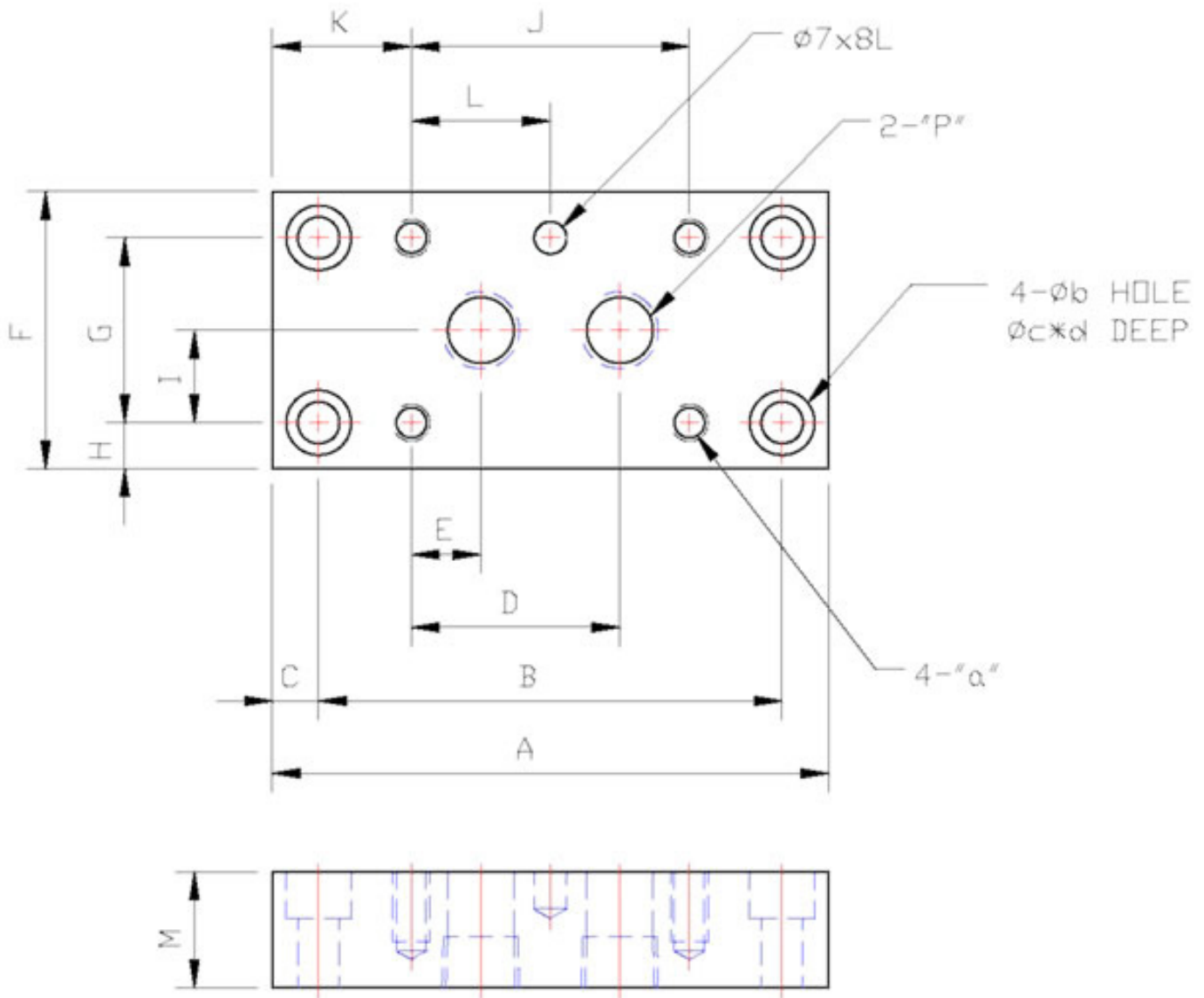
**10:** 1-1/4" NPT

4

**N:** NPT Threads

# FLOW CONTROLS RESTRICTORS

## DIMENSIONS



MODEL	A	B	C	D	E	F	G	H	I	J
TVM-03	120 (4.72)	100 (3.94)	10 (0.39)	45 (1.77)	15 (0.59)	60 (2.36)	40 (1.57)	10 (0.39)	20 (0.79)	60 (2.36)
TVM-06	134 (5.28)	110 (4.33)	12 (0.47)	54 (2.13)	16 (0.63)	82 (3.23)	58 (2.28)	12 (0.47)	29 (1.14)	70 (2.76)
TVM-10	160 (6.30)	132 (5.20)	14 (0.55)	71 (2.80)	21 (0.83)	100 (3.94)	72 (2.83)	14 (0.55)	36 (1.42)	92 (3.62)

MODEL	K	L	M	P	a	b	c	d
TVM-03	30 (1.18)	30 (1.18)	25 (0.98)	M10 (3/8")	M8x15L (5/16"x0.6"L)	9 (0.35)	14 (0.55)	10 (0.39)
TVM-06	32 (1.26)	35 (1.38)	32 (1.26)	M19 (3/4")	M10x20L (3/8"x0.8"L)	11 (0.43)	18 (0.71)	12 (0.47)
TVM-10	34 (1.34)	46 (1.81)	50 (1.97)	M32 (1-1/4")	M12x35L (1/2"x1.4"L)	13 (0.51)	20 (0.79)	14 (0.55)