

A M E R I C A N   W E T   T A N K   S Y S T E M S

**AMERICAN**



**MOBILE POWER**

UPRIGHT MOUNT RESERVOIRS

get the  
**WET TANK**

**Solution**



**Vol. 9**

**1-800-634-8265**

[www.americanmobilepower.com](http://www.americanmobilepower.com)





# WARRANTY

The American Wet Tank System is warranted to be free of defects in material or workmanship and to meet American Mobile Power's written specifications at the time of sale. American's obligation and liability under this warranty is expressly limited to repairing or replacing, at American's option, within one year after date of original installation any defective part or parts or any product not meeting the specifications.

**This warranty is in lieu of all other warranties, express or implied. American makes no warranty of merchant ability or of fitness for any particular purpose. American's obligation under this warranty shall not include any transportation charges or costs of installation of any liability for direct, indirect, special, incidental, or consequential damages or delay. The remedies set forth herein are exclusive, and American's liability with respect to any contract or sale or anything done in connection therewith, whether in contract, in tort, under any warranty, or otherwise, shall not, except as expressly provided herein, exceed the price of the product or part on which such liability is based.**

If requested by American, products or parts for which a warranty claim is made are to be returned transportation prepaid to a Service Center designated by American. Any installation or use not in accordance with the catalog or package instructions, other improper use, operation beyond an intermittent duty, substitution of parts not approved by American, use with equipment other than the equipment on which the Wet Tank System is first installed, or alteration or repair made to the unit other than at an American designated Service Facility, shall void this warranty.



## WARNING:

IMPROPER SELECTION OR IMPROPER USE OF THE PRODUCTS AND/OR SYSTEMS DESCRIBED HEREIN OR RELATED ITEMS CAN CAUSE DEATH, PERSONAL INJURY AND PROPERTY DAMAGE.

This document and other information from American Mobile Power and authorized distributors provide this product and/or system options for further investigation by users having technical expertise. It is important that you analyze all aspects of your application and review the information concerning the product or system in the current product catalog. Due to the variety of operating conditions and applications for these products or systems, the user, through its own analysis and testing, is solely responsible for making the final selection of the products and systems and assuring that all performance, safety and warning requirements of the application are met. The products described herein, including without limitation, product features and specifications. Designs are subject to change by American Mobile Power at any time without notice.



## Model A2000

Polyethylene Upright - 50 Gallon

Tank Size: 36" long x 16" wide x 26" high

Shipping Weight: 80#

Polyethylene tank assembly with two 2" screw-in NPT bottom ports; filler/breather assembly - including 40 micron filter/breather cap (chain mounted); heavy duty mounting base; one 2" to 1 1/4" plated reducer bushing; the ASK-200 mounting and spring kit. This unit may be used for a two or three line system. Base and fill assembly are factory installed and mounted. Diffuser, fill cap, reducer bushing and mounting kit are boxed individually. All shipped in one carton. Oil and temperature level indicator included.

CHANGES MAY BE MADE TO PRODUCT WITHOUT NOTICE.

TO SEE OUR FULL LINE OF DRAWINGS GO TO [WWW.AMERICANMOBILEPOWER.COM](http://WWW.AMERICANMOBILEPOWER.COM)

Order No.	Weight	Description	Page #
ASK-200	12#	Chassis Mounting Kit	37
APP-225	1#	Port Reducer Bushing - plated, 2" x 1-1/4"	41
ADA-250	2#	Diffuser Assembly - 8" long - 2" to 1-1/4"	40
ABC-315	1#	Filter/Breather Cap Only	39
AFC-330	2#	Fill Assembly	38
AMB-312	20#	Mounting Base Panel	37

ALL TANKS FACTORY TESTED

# Model A3000

## Steel Upright - 50 Gallon

Tank Size: 34" long x 13" wide x 26" high

Shipping Weight: 150#



Steel tank assembly with diamond plate top section; fully baffled; two 1-1/4" NPT bottom ports, internally diffused; dual mounting rails (2"x 2") welded to tank assembly. Tank is powder coated black. Features filtered mushroom vent in tank top for increased air exchange. Filler/Breather assembly - including 40 micron filter/breather cap (chain-mounted) with nylon strainer basket and bayonet closure. The ASK-200 mounting and spring kit includes four pre-drilled powder coated mounting angles, plated bolts, washers, lock nuts, four plated springs, and four pre-drilled mounting pads. The mounting kit is boxed and shipped in the tank assembly carton. The complete unit is packaged in a single carton and shipped by UPS.

### Ordering Options

<i>Product</i>	<i>Product Description</i>
A3000	1-1/4" NPT bottom ports
A3000-ST	1-1/4" NPT bottom ports & Sight Temperature Gauge
A3000-15	1-1/2" NPT bottom ports
A3000-15ST	1-1/2" NPT bottom ports & Sight Temperature Gauge
* A3000-2	2" NPT bottom ports
* A3000-2ST	2" NPT bottom ports & Sight Temperature Gauge

\*2" Ports are non-diffused

**CHANGES MAY BE MADE TO PRODUCT WITHOUT NOTICE.**

**TO SEE OUR FULL LINE OF DRAWINGS GO TO [WWW.AMERICANMOBILEPOWER.COM](http://WWW.AMERICANMOBILEPOWER.COM)**

Order No.	Weight	Description	Page #
<b>ABA-138</b>	<b>1#</b>	<b>Breather Vent - 3/8" NPT</b>	<b>39</b>
<b>ASK-200</b>	<b>12#</b>	<b>Chassis Mounting Kit</b>	<b>37</b>
<b>ABC-315</b>	<b>1#</b>	<b>Filter/Breather Cap Only</b>	<b>39</b>
<b>AFC-330</b>	<b>2#</b>	<b>Fill Assembly</b>	<b>38</b>



## Model A3035-ST

Steel Upright - 35 Gallon

Tank Size: 42" long x 8" wide x 24" high

Shipping Weight: 120#

Steel tank assembly with diamond plate top section; fully baffled. Two 1-1/4" NPT bottom ports, internally diffused; dual mounting rails (2" x 2") welded to tank assembly. Tank is powder coated black. Filter/breather assembly-including 40 micron filter/breather cap (chain mounted) with nylon strainer basket and bayonet closure. The ASK-200 mounting and spring kit includes four pre-drilled powder coated mounting angles, plated bolts, washers, lock nuts, four plated springs, and four pre-drilled mounting pads. The mounting kit is boxed and shipped in the tank assembly carton. Oil and temperature level indicator is included. The complete unit is packaged in one carton and shipped by UPS.

CHANGES MAY BE MADE TO PRODUCT WITHOUT NOTICE.  
TO SEE OUR FULL LINE OF DRAWINGS GO TO [WWW.AMERICANMOBILEPOWER.COM](http://WWW.AMERICANMOBILEPOWER.COM)

Order No.	Weight	Description	Page #
ASK-200	12#	Chassis Mounting Kit	37
ABC-315	1#	Filter/Breather Cap Only	39
AFC-330	2#	Fill Assembly	38

ALL TANKS FACTORY TESTED

# Model A3070

## Steel Upright - 70 Gallon

Tank Size: 46.5" long x 13" wide x 26" high

Shipping Weight: 135#

Mounting Kit Weight: 52#



Total steel construction; top tank section built of Diamond Plate; fully baffled. Two 1-1/2" NPT bottom ports, internally diffused. Tank assembly powder coated black. Features filtered mushroom vent in tank top for increased air exchange. Filler/breather assembly - including 40 micron filter/breather cap (chain mounted) with nylon strainer basket and bayonet closure. Base assembly carton includes mounting base, carbon steel strap assembly with springs and rubber mounting pads. Mounting kit includes four pre-drilled powder coated mounting angles, plated bolts, washers, nyloc-nuts, four plated springs and four pre-drilled mounting pads. Mounting kit (ASK-200) is boxed and shipped in the base carton. Complete unit is boxed and shipped in two cartons and shipped by UPS.

### Ordering Options

Product	Product Description
A3070	1-1/2" NPT bottom ports
A3070-ST	1-1/2" NPT bottom ports & Sight Temperature Gauge
* A3070-2	2" NPT bottom ports
* A3070 -2ST	2" NPT bottom ports & Sight Temperature Gauge

\*2" Ports are non-diffused

**CHANGES MAY BE MADE TO PRODUCT WITHOUT NOTICE.**

**TO SEE OUR FULL LINE OF DRAWINGS GO TO [WWW.AMERICANMOBILEPOWER.COM](http://WWW.AMERICANMOBILEPOWER.COM)**

Order No.	Weight	Description	Page #
<b>ABA-138</b>	<b>1#</b>	<b>Breather Vent - 3/8"</b>	<b>39</b>
<b>ASK-200</b>	<b>12#</b>	<b>Chassis Mounting Kit</b>	<b>37</b>
<b>ABC-315</b>	<b>1#</b>	<b>Filter/Breather Cap Only</b>	<b>39</b>
<b>AFC-330</b>	<b>2#</b>	<b>Fill Assembly</b>	<b>38</b>
<b>ABK-340-C</b>	<b>52#</b>	<b>Mounting Base Kit Complete</b>	<b>36</b>
<b>AMT-307</b>	<b>135#</b>	<b>Upright Steel Tank Only</b>	
<b>ALL TANKS FACTORY TESTED</b>			

**OPTION:** Available with stainless steel straps.



## Model A30100-ST

Steel Upright - 100 Gallon

Tank Size: 48" long x 16" wide x 30" high

Shipping Weight: 248#

Steel tank assembly, fully baffled. Two 2" NPT bottom ports; one 2" NPT bottom center drain port with plug. Tank assembly is powder coated black. Two filtered mushroom vents in tank top for increased air exchange. Filler/Breather assembly, including 40 micron filter/breather cap (chain mounted) with nylon strainer basket and bayonet closure. Two base angles welded to tank body; four 2.5"x 2.5" x 4" gusseted mounting angles shipped loose. The ASK-210 heavy duty spring mounting kit; fill assembly, port plug and mushroom vents are packaged in a separate carton. Oil and temperature level indicator included. Complete tank assembly and carton are skid mounted for truck freight.

**CHANGES MAY BE MADE TO PRODUCT WITHOUT NOTICE.**

**TO SEE OUR FULL LINE OF DRAWINGS GO TO [WWW.AMERICANMOBILEPOWER.COM](http://WWW.AMERICANMOBILEPOWER.COM)**

Order No.	Weight	Description	Page #
ABA-138	1#	Breather Vent - 3/8" NPT	39
ASK-210	20#	Heavy Duty Chassis Mounting Kit	37
ABC-315	1#	Filter/Breather Cap Only	39
AFC-330	2#	Fill Assembly	38
APP-220	1#	Steel Port Plug - 2" NPT	41
ASG-105	1#	Sight/Temperature Gauge	40
ASK-200G	12#	2.5" x 2.5" x 4" Gusseted Mounting Kit	37

ALL TANKS FACTORY TESTED

# Model A4000

## Aluminum Upright - 50 Gallon

Tank Size: 34" long x 13" wide x 26" high

Shipping Weight: 77#



Total aluminum construction; top tank section built of Bright Diamond Plate, balance bright mill finish; fully baffled. Two heavy duty machined 1-1/4" NPT bottom ports, internally diffused. Features filtered mushroom vent in tank top for increased air exchange. Filler/Breather assembly - including 40 micron filter/breather cap (chain mounted) with nylon strainer basket and bayonet closure. Dual mounting rails (2" x 2") welded to tank body. Mounting kit includes four pre-drilled powder coated mounting angles, plated bolts, washers, lock-nuts, four plated springs, and four pre-drilled mounting pads. Mounting kit (ASK-200) is boxed and shipped in the tank assembly carton. Complete unit is packaged in one carton and shipped by UPS.

### Ordering Options

<i>Product</i>	<i>Product Description</i>
A4000	1-1/4" NPT bottom ports
A4000-ST	1-1/4" NPT bottom ports & Sight Temperature Gauge
A4000-15	1-1/2" NPT bottom ports
A4000-15ST	1-1/2" NPT bottom ports & Sight Temperature Gauge
* A4000-2	2" NPT bottom ports
* A4000-2ST	2" NPT bottom ports & Sight Temperature Gauge

\*2" Ports are non-diffused

**CHANGES MAY BE MADE TO PRODUCT WITHOUT NOTICE.**

**TO SEE OUR FULL LINE OF DRAWINGS GO TO [WWW.AMERICANMOBILEPOWER.COM](http://WWW.AMERICANMOBILEPOWER.COM)**

Order No.	Weight	Description	Page #
<b>ABA-16</b>	<b>1#</b>	<b>Breather Vent - 1" NPT</b>	<b>39</b>
<b>ASK-200</b>	<b>12#</b>	<b>Chassis Mounting Kit</b>	<b>37</b>
<b>ABC-315</b>	<b>1#</b>	<b>Filter/Breather Cap Only</b>	<b>39</b>
<b>AFC-330</b>	<b>2#</b>	<b>Fill Assembly</b>	<b>38</b>
<b>ALL TANKS FACTORY TESTED</b>			



# Model A4035-ST

Aluminum Upright - 35 Gallon

Tank Size: 42" long x 8" wide x 24" high

Shipping Weight: 66#



Total aluminum construction; top tank section built of bright diamond plate, balance bright mill finish; fully baffled. Two heavy duty machined 1-1/4" NPT bottom ports, internally diffused. Filler/breather assembly-including 40 micron filter/breather cap (chain mounted) with nylon strainer basket and bayonet closure. Dual mounting rails (2" x 2") welded to tank body. Mounting kit includes four pre-drilled powder coated mounting angles, plated bolts, washers, lock-nuts, four plated springs, and four pre-drilled mounting pads. Mounting kit (ASK-200) is boxed and shipped in the tank assembly carton. Oil and temperature level indicator included. Complete unit is packaged in one carton and shipped by UPS.

CHANGES MAY BE MADE TO PRODUCT WITHOUT NOTICE.

TO SEE OUR FULL LINE OF DRAWINGS GO TO [WWW.AMERICANMOBILEPOWER.COM](http://WWW.AMERICANMOBILEPOWER.COM)

Order No.	Weight	Description	Page #
ASK-200	12#	Chassis Mounting Kit	37
ABC-315	1#	Filter/Breather Cap Only	39
AFC-330	2#	Fill Assembly	38
ASG-105	1#	Sight/Temperature Gauge	40
ALL TANKS FACTORY TESTED			

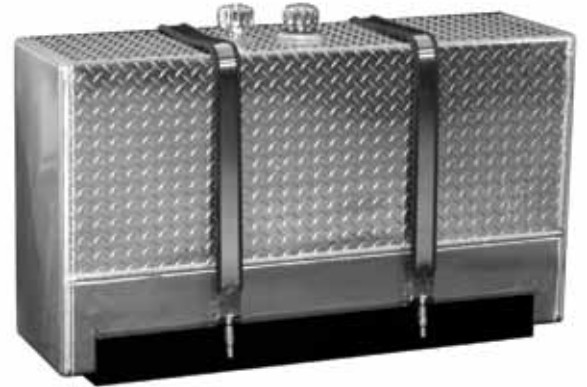
# Model A4070

## Aluminum Upright - 70 Gallon

Tank Size: 46.5" long x 13" wide x 26" high

Shipping Weight: 66#

Mounting Kit Weight: 52#



**Picture shown with stainless strap option.**

Aluminum tank assembly; top tank section built of Bright Diamond Plate, balance bright mill finish; fully baffled. Two heavy duty machined 1-1/2" NPT bottom ports, internally diffused. Features filtered mushroom vent in tank top for increased air exchange. Filler/Breather assembly - including 40 micron filter/breather cap (chain mounted) with nylon strainer basket and bayonet closure. Base assembly carton includes mounting base, carbon steel strap assembly with springs and rubber pads. Mounting kit includes four pre-drilled powder-coated mounting angles, plated bolts, washers, nyloc-nuts, four plated springs and four pre-drilled mounting pads. Mounting kit (ASK-200) is boxed and shipped in the base assembly carton. Complete unit is packaged in two cartons and shipped by UPS.

### Ordering Options

Product	Product Description
A4070	1-1/2" NPT bottom ports
A4070-ST	1-1/2" NPT bottom ports & Sight Temperature Gauge
* A4070-2	2" NPT bottom ports
* A4070 -2ST	2" NPT bottom ports & Sight Temperature Gauge

\*2" Ports are non-diffused

**CHANGES MAY BE MADE TO PRODUCT WITHOUT NOTICE.**

**TO SEE OUR FULL LINE OF DRAWINGS GO TO [WWW.AMERICANMOBILEPOWER.COM](http://WWW.AMERICANMOBILEPOWER.COM)**

Order No.	Weight	Description	Page #
<b>ABA-16</b>	<b>1#</b>	<b>Breather Vent - 1" NPT</b>	<b>39</b>
<b>ASK-200</b>	<b>12#</b>	<b>Chassis Mounting Kit</b>	<b>37</b>
<b>ABC-315</b>	<b>1#</b>	<b>Filter/Breather Cap Only</b>	<b>39</b>
<b>AFC-330</b>	<b>2#</b>	<b>Fill Assembly</b>	<b>38</b>
<b>ABK-340-C</b>	<b>52#</b>	<b>Mounting Base Kit Complete</b>	<b>36</b>
<b>AMT-407</b>	<b>66#</b>	<b>Upright Aluminum Tank Only</b>	
<b>ALL TANKS FACTORY TESTED</b>			

**OPTION:** Available with stainless steel straps.



# Hydraulic Mounting Products

## Upright - Mounting Kits

### ABK-340-C & ABK-340-S

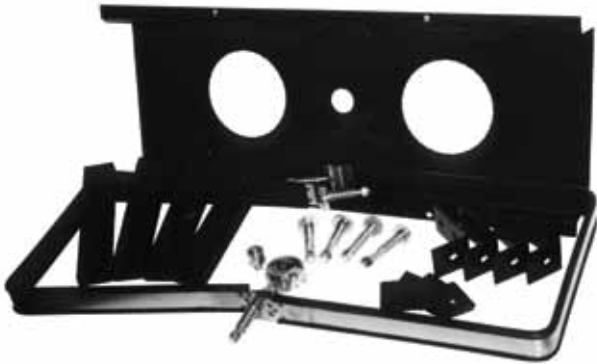
For 70 Gallon Upright Tanks

#### ABK-340-C

Carbon Mounting Kit: 70 Gal.

Weight: 63#

The ABK-340-C Mounting kit comes standard with the A3070 and the A4070 hydraulic upright tanks. Mounting kit includes: Mounting base panel, carbon steel strap assembly with springs and rubber mounting pads. Also supplied is the ASK-200 mounting kit which includes four pre-drilled powder coated mounting angles, plated bolts, washers, nyloc-nuts, four plated springs, and four mounting pads. Also includes filter/breather cap and auxillary vent. Ships in one carton.



#### ABK-340-S

Stainless Mounting Kit: 70 Gal.

Weight: 63#

The ABK-340-S Stainless Mounting kit is available as an upgrade option from the ABK-340C. This mounting kit is usable with the 70 gallon upright tanks. Mounting kit includes: Mounting base panel, stainless steel strap assembly with springs and rubber mounting pads. Also supplied is the ASK-200 mounting kit which includes four pre-drilled powder coated mounting angles, plated bolts, washers, nyloc-nuts, four plated springs, and four mounting pads. Also includes filter/breather cap and auxillary vent.

**CHANGES MAY BE MADE TO PRODUCT WITHOUT NOTICE.**

**TO SEE OUR FULL LINE OF DRAWINGS GO TO [WWW.AMERICANMOBILEPOWER.COM](http://WWW.AMERICANMOBILEPOWER.COM)**

Order No.	Weight	Description	Page #
AMB-405HD	20#	Mounting Base Panel - Heavy Duty	37
AMP-205	5#	Rubber Inserts for Heavy Duty Mounting Base Panel	37
ASK-200	12#	Chassis Mounting Kit	37
ASA-355	7#	Carbon Steel Strap Assembly (ABK-340-C)	37
ASA-355-S	5#	Stainless Steel Strap Assembly (ABK-340-S)	37





# American Wet Tank System

## Model A2000

Gross Dimensional Capacity: 50 Gallons

### Mounting Kit Contents: Part Number ASK-200

Qty	Description
4	Pre-drilled and powder coated chassis mounting angles
4	Pre-drilled rubber mounting pads
4	Two inch (2") plated compression springs
4	Cap screws - 5/8" - 11 x 3-1/2", grade 5
4	Ny-Loc nuts - 5/8" - 11
8	Plated flat washers - 5/8"

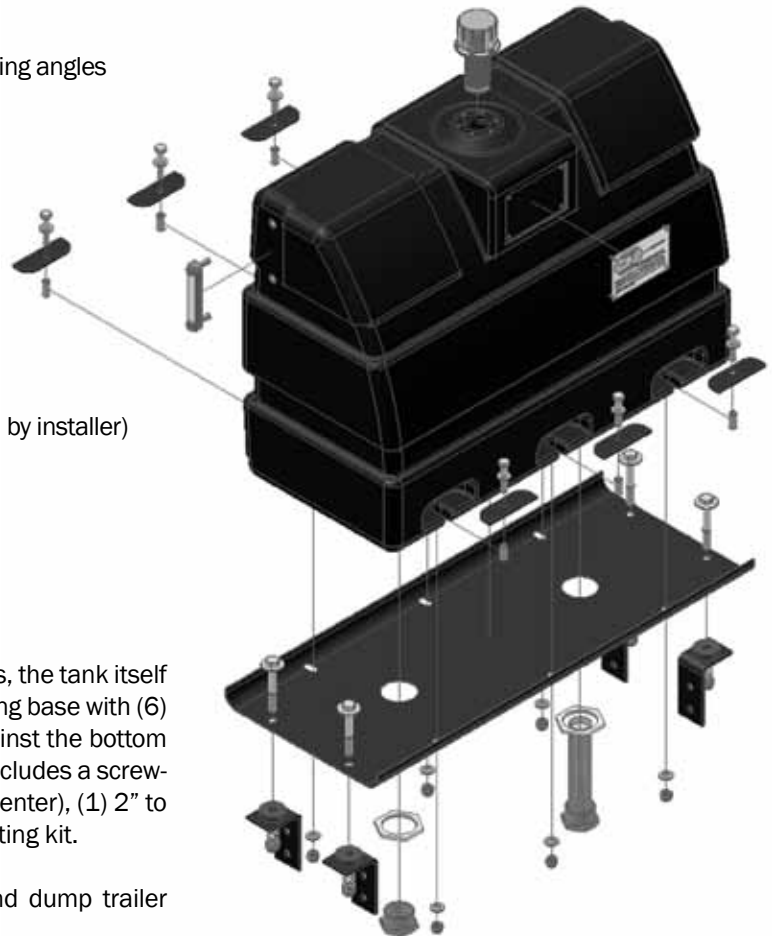
### Materials Required To Complete Installation:

Qty	Description
8	Cap screws 1/2", grade 5 (length determined by installer)
8	Ny-Loc Nuts - 1/2" diameter
16	1/2" washers

### Pre-Packaged Kit Includes:

Polyethylene tank assembly with (2) 2" NPT bottom ports, the tank itself is factory mounted and secured to the predrilled mounting base with (6) bolts and ny-loc nuts. A compression nut is torqued against the bottom of the base. Do NOT remove torqued nuts. The kit also includes a screw-in diffuser, a sight-temperature gauge (mounted 5" on center), (1) 2" to 1-1/4" plated reducer bushing, and the ASK-200 mounting kit.

This wet tank assembly has been designed for an end dump trailer application using either a two or three line system.



**WARNING:** MAXIMUM HYDRAULIC CYCLE TIME MUST NOT EXCEED 5 MINUTES. LONGER RUNNING TIME MAY RESULT IN EXCESSIVE HEAT BUILD UP AND SUBSEQUENT DAMAGE.

OPERATING TEMPERATURE: DO NOT EXCEED 180°

# American Wet Tank System

## Model A2000

### INSTRUCTIONS:

1. Position tank and base assembly on frame rails of the truck chassis as desired.

2. Position chassis mounting angles so that the double pre-drilled holes are positioned against the frame rail and the single (11/16") hole is positioned upward against the mounting base. (see diagram at right)

*Note: The top of the mounting angle should be flush with the top of the chassis rail as shown.*

3. Using the pre-drilled mounting angles as a guide, mark both the frame rail and tank mounting angles. Chassis requires use of a 9/16" drill bit while the mounting base requires an 11/16" drill bit. Drill holes and bolt the four mounting angles into place.

*Note: The rubber pads should be above the top of the frame rails. (see diagram at right)*

4. National Pipe Thread port openings:

The American Wet Tank System is designed with two 2" NPT metal port openings in the bottom of the tank. Each fitting is molded securely in the tanks and features an exterior mounted compression nut. These nuts are torqued to tolerance at the factory and **SHOULD NOT BE DISTURBED**. The system allows either port to be used as a suction or return line. Further, the assembly may be plumbed for use as a two or three line system. (see diagram at right)

5. **DIFFUSER INSTALLATION:**

Simply remove diffuser unit from packaging, seal threads using standard pipe dope only and screw into port of your selection. Tighten fitting into place **USING CARE NOT TO OVER TIGHTEN**. (see diagram at right)

*Note: Installed diffuser provides 1-1/4" NPT opening to accommodate hose connection.*

6. **REDUCER BUSING:** is provided for the second port (2" to 1-1/4"). Again, using standard pipe dope on threads and taking caution not to over tighten. This port is ready for hose connection if using a three line system or may be plugged if a two line system is desired. (see diagram at right)

*Note: Use torque required to seat either diffuser or reducer bushing. Taking care not to overtighten.*





7. Install pre-assembled tank and mounting base: secure with 5/8" x 4-1/2" cap screws, washers, springs and lock nuts as supplied in mounting kit. (ASK-200)  
(see main diagram)

*Note: Tighten the 5/8" locknuts until the compressed length of the spring is 1-1/2"*  
(see diagram at right)

**DO NOT COMPRESS SPRINGS COMPLETELY**



8. **FILL CAP:** Remove filter/breather cap from its carton; re-connect chain and mount in bayonet style closure. Maximum fill is 2" below bayonet closure.

*Note: Filter/breather cap should be periodically cleaned or replaced to prevent plugging and possible system damage.*

9. Install Notices In-Cab

You are now ready to begin plumbing the system of your choice.

## TANK LABELING



*These Labels are installed on the tank by the manufacturer.*

## IN-CAB NOTICE



### INSTALLER:

*Metal "Notice" Label must be placed in-cab.  
Peel backing and press onto a prominent in-cab location.*



# American Wet Tank System

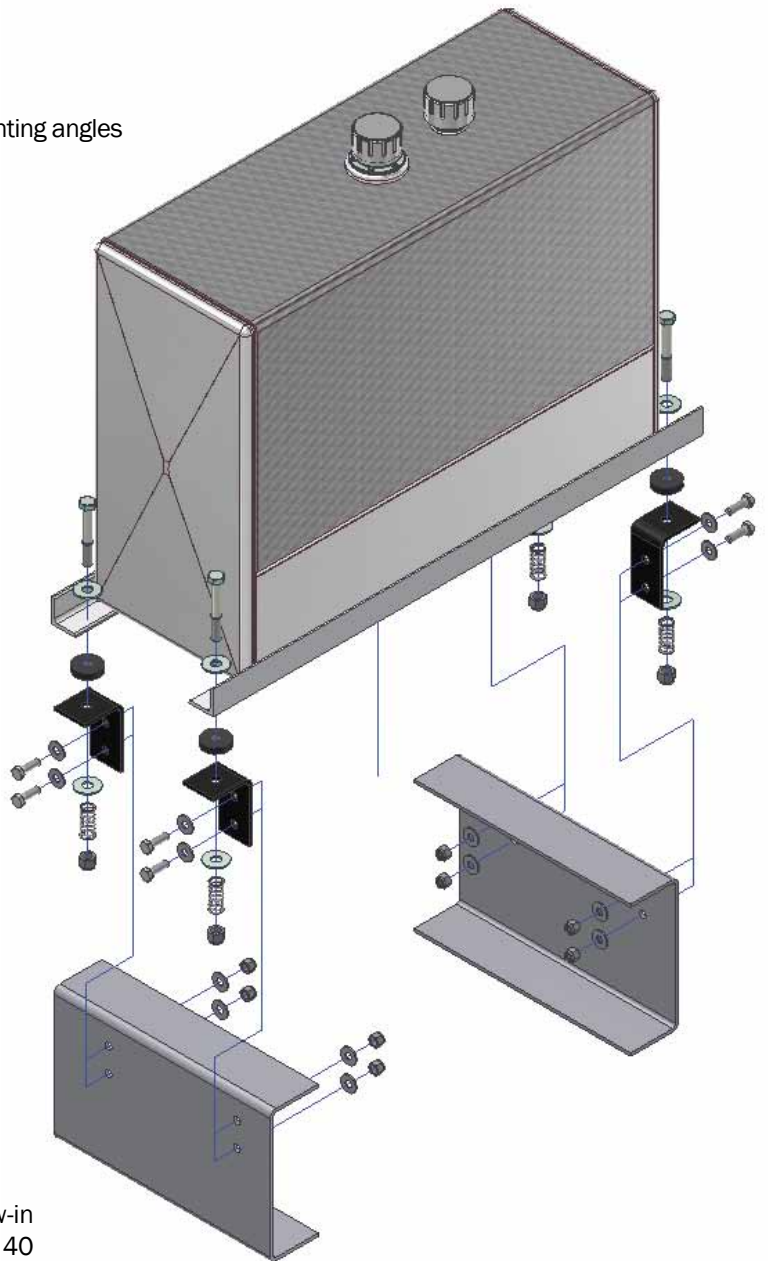
## Model A3000 & A4000

### Mounting Kit Contents: Part Number ASK-200

Qty	Description
4	Pre-drilled and powder coated chassis mounting angles
4	Pre-drilled rubber mounting pads
4	Two inch (2") plated compression springs
4	Cap screws - 5/8" - 11 x 4-1/2", grade 5
4	Ny-Loc nuts - 5/8" - 11
8	Plated flat washers - 5/8"

### Materials Required To Complete Installation:

Qty	Description
8	Cap screws 1/2", grade 5 (length determined by installer)
8	Ny-Loc nuts - 1/2" diameter
16	1/2" washers



### Pre-Packaged Kit Includes:

Steel or aluminum tank assembly with two 1-1/4" screw-in NPT bottom ports, filler/breather assembly including a 40 micron filter/breather cap (chain mounted), auxiliary vent, and the ASK-200 mounting kit.

This wet tank assembly has been designed for a dump trailer application using either a two or three line system.



# American Wet Tank System

## Model A3000 & A4000

### INSTRUCTIONS:

1. Position tank and base assembly on frame rails of the truck chassis as desired.

2. Position chassis mounting angles so that the double pre-drilled holes are positioned against the frame rail and the single ( $11/16"$ ) hole is positioned upward against the tank mounting angles. (see diagram at right)

*Note: The top of the mounting angle should be flush with the top of the chassis rail.*



3. Using the pre-drilled mounting angles as a guide, mark both the frame rail and tank mounting angles. Chassis requires use of a  $9/16"$  drill bit while the mounting angles require an  $11/16"$  drill bit. Drill holes and bolt the four mounting angles into place.

4. Place tank assembly across frame with mounting rails lined up directly over top holes in mounting angles. Mark and drill using a  $11/16"$  drill bit

5. Place rubber mounting pads on top of the four mounting angles. (see diagram at right)

*Note: The rubber pads should be above the top of the frame rails.*



6. Reposition tank over pads and angles, install bolts and springs as shown in exploded view. (see diagram at right)



7. National Pipe Thread port openings: (see diagram at right)  
The American Wet Tank System is designed with two  $1-1/4"$  NPT port openings in the bottom of the tank. The system allows either port to be used as a suction or return line.



The assembly may be plumbed for use as a two or three line system.

# American Wet Tank System

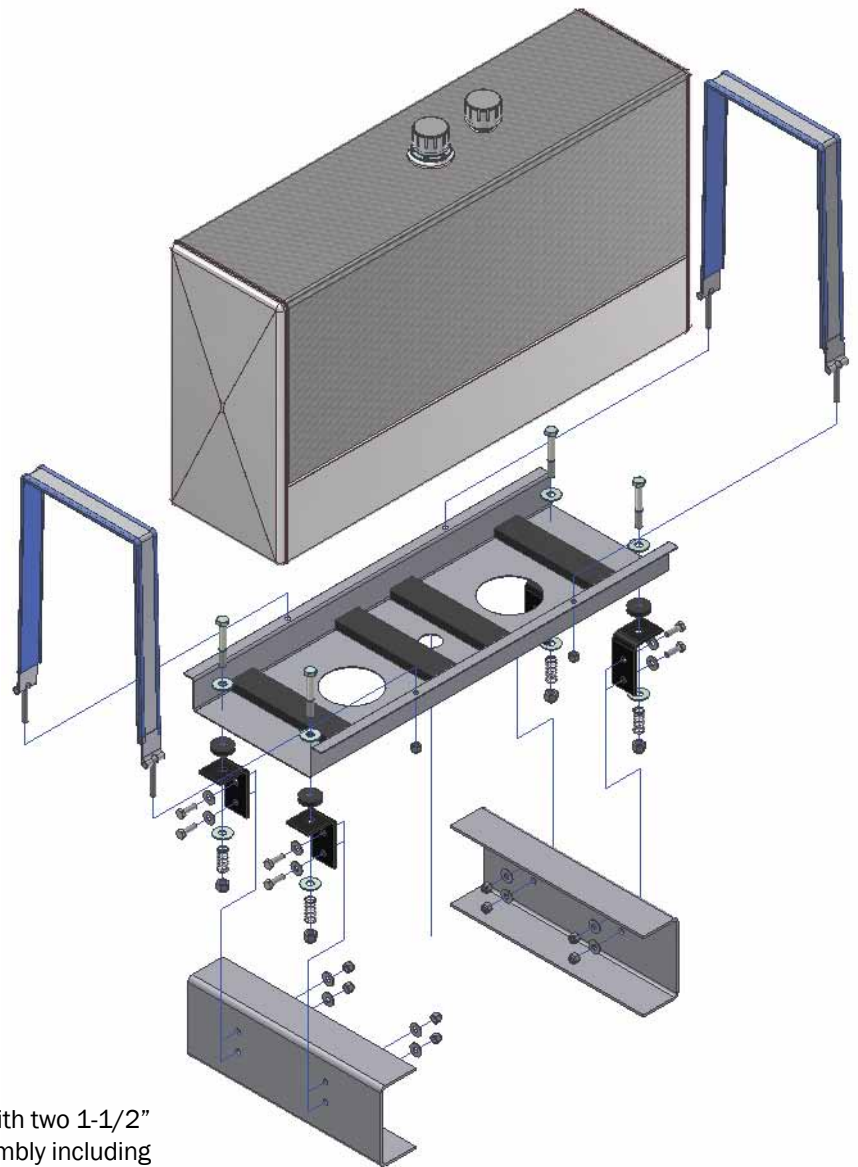
## Model A3070 & A4070

### Mounting Kit Contents: Part Number ABK-340

Qty	Description
1	Heavy duty mounting base panel
2	2" wide strap assemblies including (4) ny-loc nuts w/ springs
4	13"x 2"x 1" rubber mounting pads
1	ASK-200 frame mounting kit

### Materials Required To Complete Installation:

Qty	Description
8	Cap screws 1/2", grade 5 (length determined by installer)
8	Ny-loc nuts - 1/2" diameter
16	1/2" washers



### Pre-Packaged Kit Includes:

Steel or aluminum tank assembly (70 gallon) with two 1-1/2" screw-in NPT bottom ports, filler/breather assembly including a 40 micron filter/breather cap (chain mounted), auxiliary vent, and the ABK-340 mounting base kit.

This wet tank assembly has been designed for use as a two or three line system.





# American Wet Tank System

## Model A3070 & A4070

### INSTRUCTIONS:

1. Position base panel on frame rails of the truck chassis as desired.
2. Position chassis mounting angles so that the double pre-drilled holes are positioned against the frame rail and the single (11/16") hole is positioned upward against the tank mounting base panel.  
(see diagram at right)

*Note: The top of the mounting angle should be flush with the top of the chassis rail.*

3. Using the pre-drilled mounting angles as a guide, mark both the frame rail and tank mounting base panel. Chassis requires use of a 9/16" drill bit while the mounting base requires an 11/16" drill bit. Drill holes and bolt the four mounting angles into place. (see diagram at right)

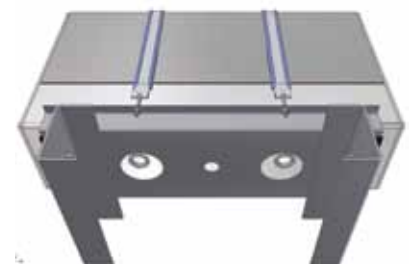
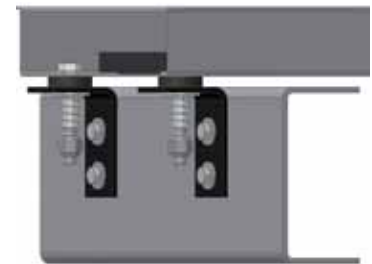
4. Next, place base panel over angles and install bolts and springs as shown in exploded view. (see diagram at right)

*Note: The rubber pads should be above the top of the frame rails.*

5. Place the (4) 13" x 2" x 1" rubber mounting pads on the base panel as shown in exploded view.

Center tank on base panel, install strap assemblies.  
(see diagram at right)

Rubber will conform to tank bottom as straps are tightened.



STEEL POLYETHYLENE ALUMINUM STEEL POLYETHYLENE ALUMINUM STEEL

STEEL POLYETHYLENE ALUMINUM STEEL POLYETHYLENE ALUMINUM STEEL POLYETHYLENE ALUMINUM STEEL POLYETHYLENE ALUMINUM STEEL

STEEL POLYETHYLENE ALUMINUM STEEL POLYETHYLENE ALUMINUM STEEL POLYETHYLENE ALUMINUM STEEL POLYETHYLENE ALUMINUM STEEL

A3150



A3250



A3300



A3400



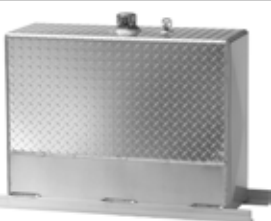
A3000



A3070



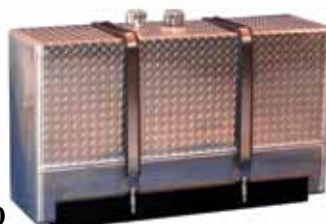
A4000



A2000



A4070



A3525



A4525



A4150



A3535



A4535



A3500



A4500



A3575



A4575



AMERICAN



MOBILE POWER

• CALL TODAY •

• WE SHIP •

JUST IN TIME!

1-800-634-8265

STEEL POLYETHYLENE ALUMINUM STEEL POLYETHYLENE ALUMINUM STEEL