

General Valve Assembly Information

The Basics

Every valve has the following elements:

- Inlet
- Main relief
- Work sections
- Outlet
- Section seals
- Stud kit to hold the assembly in place

The valve inlet is connected directly to the outlet coming from the hydraulic pump, and the valve outlet is connected directly to the tank.

The main relief valve is generally installed in the inlet and controls maximum system pressure.

The valve work sections connect the cylinders, motors, spreader valves or other auxiliary valves.



Work Section Types

Sections can be the following types:

- Single Acting (one work port)
- Double Acting (two work ports)

Actuators

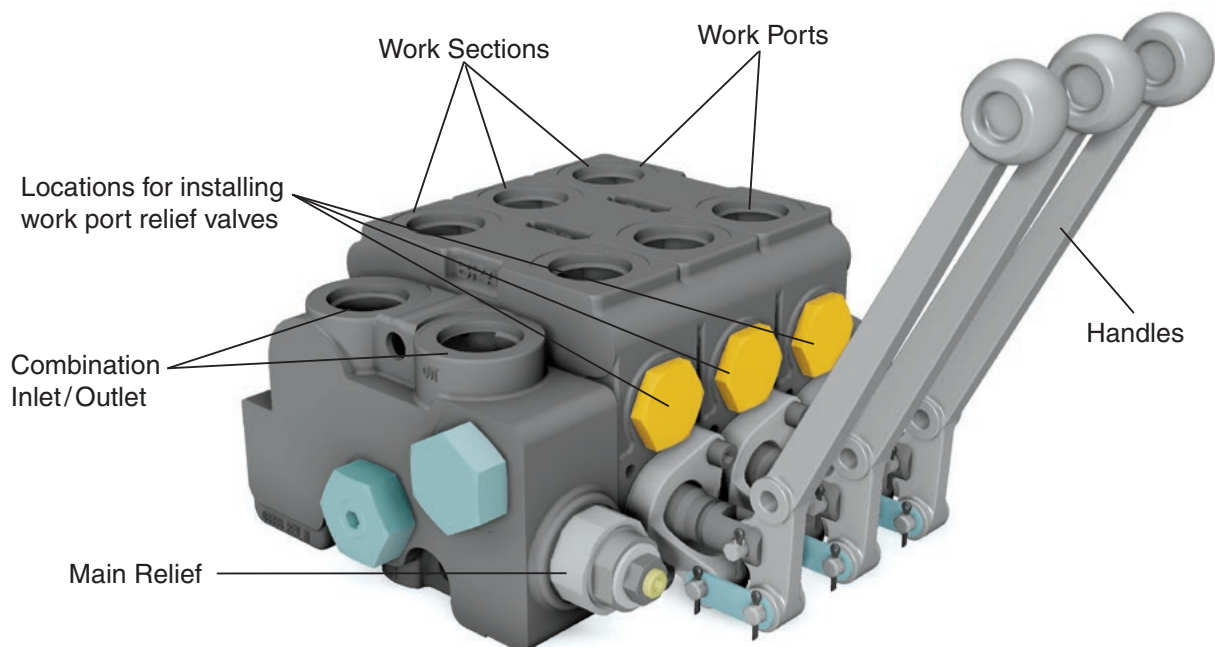
Work sections can be actuated by four means:

- Manual Handles
- Electric Solenoids
- Air Actuators
- Hydraulic Pilot

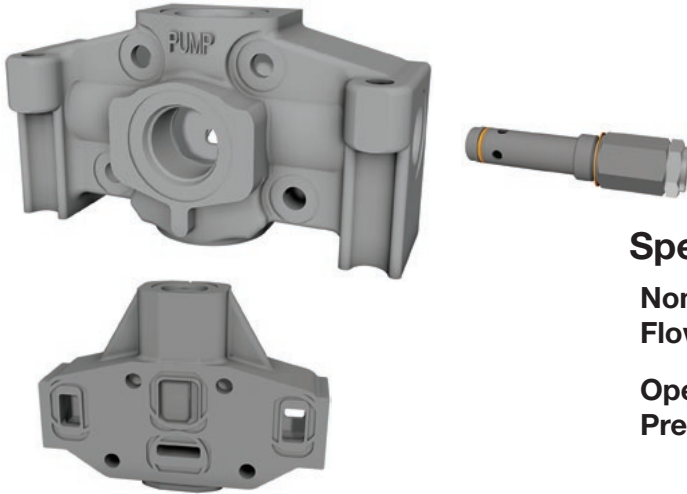
Work Port Relief Valves

Individual work section can have work port relief valves screwed into the sides of the work sections and can control:

- Control pressure
- Reduce cavitation
- Work port relief valves can be adjustable or fixed depending to the style.



VA35 and VG35 Inlets and Main Relief Valve



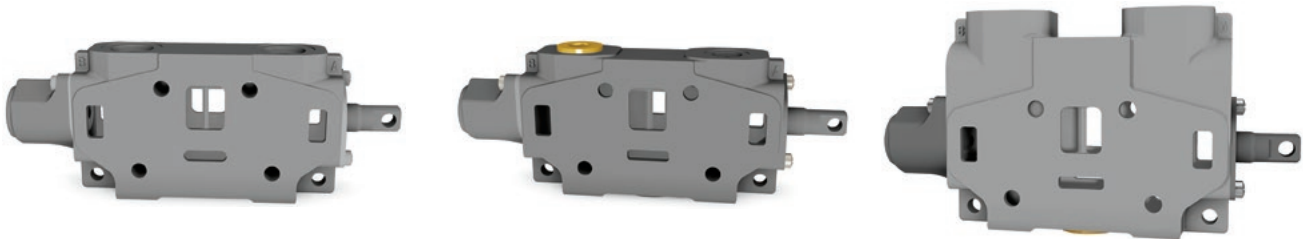
Specifications

Nominal Flow Up to 246 LPM (65 GPM)

Operating Pressure VA35 Up to 172 Bar (2500 PSI)
 VG35 Up to 241 Bar (3500 PSI)

Part Number	Model Number	Description	Porting
348-9175-005	DVA35-A880	Inlet	SAE 16 Porting
348-9174-004	DVA35-CFA80	Combined Flow Mid Inlet	SAE 16 Porting
348-9174-002	DVA35-SFA80	Split Flow Mid Inlet	SAE 16 Porting
391-1873-003	DVA35-MRV-1	Main Relief 55 - 138 Bar (800 - 2000 PSI)	N/A
391-1873-004	DVA35-MRV-2	Main Relief 138 - 172 Bar (2000 - 2500 PSI)	N/A
348-9175-008	DVG35-A880	Inlet	SAE 16 Porting
348-9174-006	DVG35-CFA80	Combined Flow Mid Inlet	SAE 16 Porting
348-9174-005	DVG35-SFA80	Split Flow Mid Inlet	SAE 16 Porting
391-1873-137	DVG35-HMRV	Main Relief 193 - 241 Bar (2800 - 3500 PSI)	N/A

VA35 and VG35 Work Sections



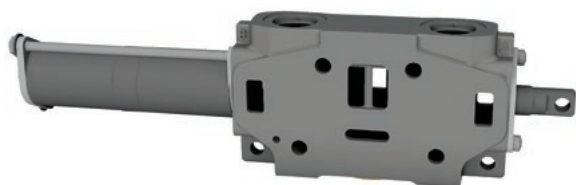
Spring Return

Part Number	Model Number	Description	Porting
348-9172-003	DVA35-DA8	Low Boy Double-Acting Cylinder Spool	SAE 16
348-9172-006	DVA35-MA8	Low Boy Double-Acting Motor Spool	SAE 16
348-9171-003	DVA35-SA8	Low Boy Single-Acting Cylinder Spool	SAE 16
348-9172-009	DVA35-HA855	High Boy Double-Acting Cylinder Spool	SAE 16
348-9172-012	DVA35-LA855	High Boy Double-Acting Motor Spool	SAE 16
348-9171-006	DVA35-JA805	High Boy Single-Acting Cylinder Spool	SAE 16

VA35 and VG35 Work Sections Continued

Spring Return

Part Number	Model Number	Description	Porting
348-9172-048	DVG35-DA8	Low Boy Double-Acting Cylinder Spool	SAE 16
348-9172-049	DVG35-MA8	Low Boy Double-Acting Motor Spool	SAE 16
348-9172-052	DVG35-HA855	High Boy Double-Acting Cylinder Spool	SAE 16
348-9172-053	DVG35-LA855	High Boy Double-Acting Motor Spool	SAE 16
348-9171-011	DVG35-JA805	High Boy Single-Acting Cylinder Spool	SAE 16



Pneumatic

Part Number	Model Number	Description	Porting
348-9172-030	DVA35-DV8	Low Boy Double-Acting Cylinder Spool	SAE 16
348-9171-016	DVA35-SV8	Low Boy Single-Acting Cylinder Spool	SAE 16
348-9172-021	DVA35-HV855	High Boy Double-Acting Cylinder Spool	SAE 16
348-9172-066	DVA35-LV855	High Boy Double-Acting Motor Spool	SAE 16

Part Number	Model Number	Description	Porting
348-9172-075	DVG35-HV855	High Boy Double-Acting Cylinder Spool	SAE 16

* Hi boy port accessories come standard unplugged and must use either a port option or port plug for operation.

VA35 and VG35 Handle Assemblies

Part Number	Model Number	Description
391-1873-097	DV35-H4	Low Boy 6" Handle
391-1873-065	DV35-H8	High Boy 8" Handle

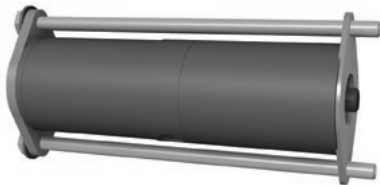


VA35 and VG35 Outlets



Part Number	Model Number	Description	Porting
348-9176-002	DVA35-TR99	Tank Return	SAE 20
348-9176-004	DVA35-PB90	Power Beyond	SAE 20
348-9176-007	DVG35-TTR99	Tank Return	SAE 20
348-9176-008	DVG35-TTB90	Power Beyond Porting	SAE 20

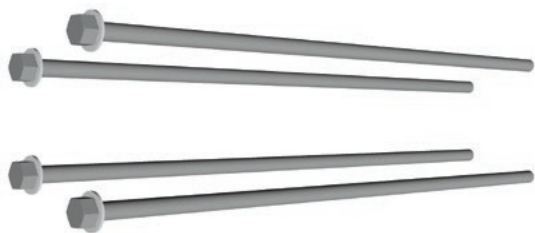
VA35 and VG35 Positioner Kits



Part Number	Model Number	Description
391-1873-203	DV35-K-213	Pneumatic Shifter
391-1873-027	DV35-K-201	3-Position Detent
391-1873-026	DV35-K-200	Spring Center Detent



VA35 and VG35 Stud Kits



Part Number	Model Number	Description
391-1873-053	DVA35-SK1	1 Work Section
391-1873-054	DVA35-SK2	2 Work Sections
391-1873-055	DVA35-SK3	3 Work Sections
391-1873-056	DVA35-SK4	4 Work Sections
391-1873-057	DVA35-SK5	5 Work Sections
391-1873-058	DVA35-SK6	6 Work Sections
391-1873-059	DVA35-SK7	7 Work Sections
391-1873-060	DVA35-SK8	8 Work Sections
391-1873-138	DVG35-TSK1	1 Work Section
391-1873-139	DVG35-TSK2	2 Work Sections
391-1873-140	DVG35-TSK3	3 Work Sections
391-1873-141	DVG35-TSK4	4 Work Sections
391-1873-142	DVG35-TSK5	5 Work Sections
391-1873-143	DVG35-TSK6	6 Work Sections
391-1873-144	DVG35-TSK7	7 Work Sections
391-1873-145	DVG35-TSK8	8 Work Sections



TSK have studs and nuts

Plugs



Part Number	Model Number	Description
08650298	K-SAE-10	Plug 5/8" O-Ring
08650299	K-SAE-12	Plug 3/4" O-Ring
08650301	K-SAE-16	Plug 1" O-Ring
391-1873-016	DV-DPL-12	Plug 3/4" O-Ring
391-1873-017	DV-DPL-16	Plug 1" O-Ring
391-1873-018	DV-DPL-20	Plug 1 1/4" O-Ring