

Chelsea® 252 Series

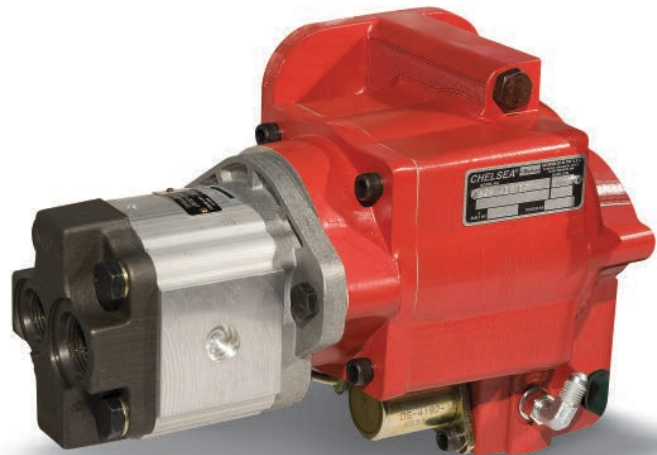
Allison, Aisin, Dodge/Ram



Overview:

Parker Chelsea understands that your time is valuable, that's why our 252 Series PTO is designed with ease of installation in mind. No longer do you have to deal with the hassles created by remote solenoids or the routing of multiple hoses. The 252 Series is designed with an integrated cartridge valve and one hose to save time on your installation. The housing was designed to slip through the floor access panel so you will not have to drop the exhaust system providing you with another time savings on your installation. The 252 Series comes standard with the unmatched reliability and toughness you have come to expect from Parker Chelsea.

- Dump
- Aerial
- Tow & Recovery
- Tire Service



Contact Information: Product Features and Benefits:

Parker Hannifin Corporation
Chelsea Products Division
8225 Hacks Cross Road
Olive Branch, MS 38654 USA

Phone: 1-888-PH4-TRUK
(1-888-744-8785)
Fax: 1-662-895-1069
chelseacustserv@parker.com

www.parker.com/chelsea

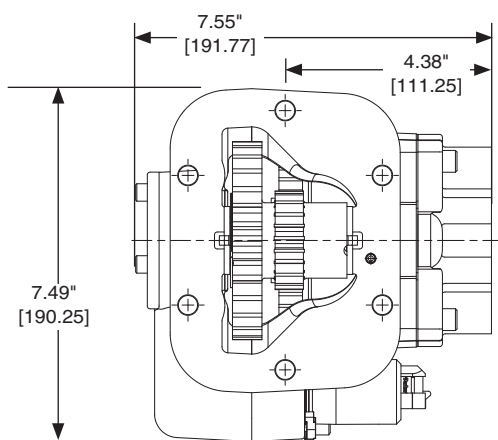
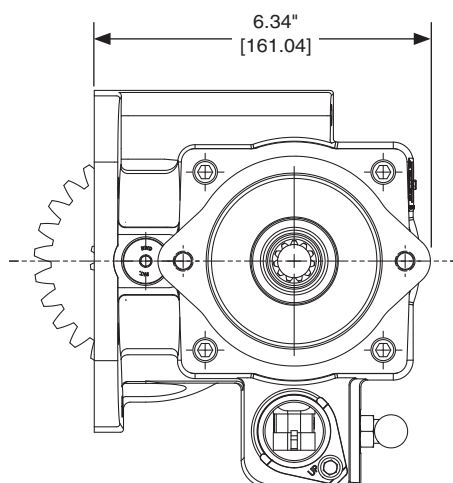
- **Controlled Compression Interface Gasket** – Eliminates the setting of gear backlash
- **Lightweight Housing Design** – Allows for maximum heat dissipation
- **Excellent Gear Contact Ratio** – Quiet operation
- **Weather Tight Electrical Connectors** – Secure under vehicle connections
- **Integrated Cartridge Valve** – Reduced installation time
- **Compact Size** – Can fit through Dodge floor access panel for transmission installation saving time
- **Torque up to 120 lb-ft** – Able to power your application requirements
- **Two Speed Ratios** – Coverage for varying applications



ENGINEERING YOUR SUCCESS.

252 SERIES POWER TAKE-OFF SPECIFICATIONS AND TECHNICAL DATA

Basic Model 252	2 5 2	R	D	K U	P	-	B	5	A D	Output Option
Mounting Option										Driveline Output
G = Metric Mount										XB = 1" Round Keyed Shaft, 1/4" Key
D = Dodge/Aisin (MY2010 & Prior)										Pump Mount
R = RAM/Aisin (MY2011 and Later)										1116 = Hyd Pump 1.6 GPM @ 1000 RPM
										1121 = Hyd Pump 2.1 GPM @ 1000 RPM
										1126 = Hyd Pump 2.6 GPM @ 1000 RPM
										1129 = Hyd Pump 2.9 GPM @ 1000 RPM
										1137 = Hyd Pump 3.7 GPM @ 1000 RPM
										1449 = Hyd Pump 4.9 GPM @ 1000 RPM
										1462 = Hyd Pump 6.2 GPM @ 1000 RPM
										P37 = Hyd Pump 3.7 GPM @ 1000 RPM
										P42 = Hyd Pump 4.2 GPM @ 1000 RPM
										P55 = Hyd Pump 5.5 GPM @ 1000 RPM
										P71 = Hyd Pump 7.1 GPM @ 1000 RPM
										P82 = Hyd Pump 8.2 GPM @ 1000 RPM
										AD = SAE A 2-Bolt Flange, SAE AH Shaft (3/4" - 11T)
										XE = SAE A 2 or 4-Bolt Flange, SAE A Shaft (5/8" - 9T)
Gear Ratio										Assembly Arrangement
Internal										5 = Left side - bulge down
D = 19/37										Right side - bulge up
M = 24/32										Shift Option
Input Option										Hydraulic
HV = Allison										B = 12V Elec/Hyd
KU = Dodge/RAM										
NOTE: For more details, see Application Catalog (Transmission model number required)										
Lube Option										
X = No Pressure Lube										
Pressure										
P = Pressure Lube Only										



252 Pumps offered in the PGP511 (5/8" - 9T / SAE A Flange – XE Output)

Option Order Code	Chelsea Pump Model	Displacement in ³ /rev	Displacement Gal/rev	Max Pressure PSI	Max Speed RPM	Shaft Size	Porting	
							Inlet	Outlet
1116	CGP-P11C016-1AC	0.37	0.002	3988	3500	5/8" - 9T	SAE12	SAE10
1121	CGP-P11C021-1AC	0.49	0.003	3988	4000	5/8" - 9T	SAE12	SAE10
1126	CGP-P11C026-1AC	0.61	0.003	3988	3600	5/8" - 9T	SAE12	SAE10
1129	CGP-P11C029-1AC	0.67	0.003	3988	3600	5/8" - 9T	SAE12	SAE10
1137	CGP-P11C037-1AC	0.85	0.004	3988	3300	5/8" - 9T	SAE12	SAE10
1449	CGP-P31C054-1AE	1.24	0.005	3500	3000	5/8" - 9T	SAE16	SAE10
1462	CGP-P31C061-1AE	1.40	0.006	3500	3000	5/8" - 9T	SAE16	SAE10

252 Pumps offered in the PGP511 (3/4" - 11T / SAE A Flange – AD Output)

Option Order Code	Chelsea Pump Model	Displacement in ³ /rev	Displacement Gal/rev	Max Pressure PSI	Max Speed RPM	Shaft Size	Porting	
							Inlet	Outlet
P37	CGP-P11C037-5AC	0.85	0.004	3988	3300	3/4" - 11T	SAE12	SAE10
P42	CGP-P11C042-5AC	0.98	0.004	3988	3000	3/4" - 11T	SAE12	SAE10
P55	CGP-P11C055-5AC	1.28	0.006	33404	2800	3/4" - 11T	SAE12	SAE10
P71	CGP-P11C071-5AC	1.65	0.007	2900	2400	3/4" - 11T	SAE12	SAE10
P82	CGP-P11C082-5AC	1.89	0.008	2465	2300	3/4" - 11T	SAE12	SAE10

© 2023 Parker Hannifin Corporation

Supersedes HY25-0082-B1/US June 2022

HY25-0082-B1/US April 2023



ENGINEERING YOUR SUCCESS.