

Chelsea® 288 Series

Constant Mesh 10-Bolt PTO for
Allison 3000/4000 Family Transmissions

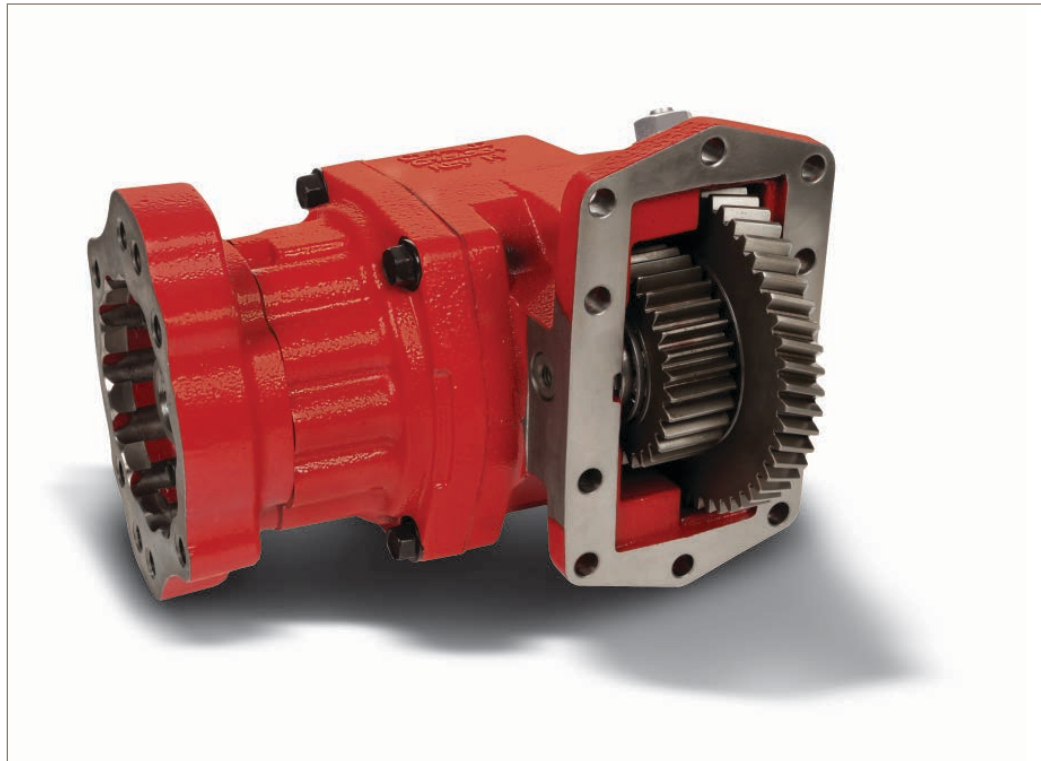


Overview:

The 288 Series is a 10-Bolt, constant mesh PTO design which features wider gears and larger capacity bearing to provide a single, continuous duty torque rating of up to 390 lb-ft. The 288 Series is now built with ductile iron bearing caps, which are 117% stronger than its predecessor. It also features an o-ring sealing configuration between the housing and bearing cap to improve clamp load. These improvements are focused on reducing the damaging vibrational effects caused by today's and future engine designs. The standard output shaft features positive stop for driveline outputs which eliminates oil seal damage from shaft couplings. Wet Spline technology is available for the 288 Series, which prevents premature spline fretting and increases pump shaft life by providing a fresh, clean flow of oil through the PTO and pump shaft.

Applications:

- Snow & Ice
- Vacuum
- Aerial
- Refuse



Contact Information:

Parker Hannifin Corporation
Chelsea Products Division
8225 Hacks Cross Road
Olive Branch, MS 38654 USA

Phone: 1-888-PH4-TRUK
(1-888-744-8785)
chd_support@support.parker.com

www.parker.com/chelsea



Product Features and Benefits:

- Ductile Iron Bearing Cap – 117% stronger than gray iron.
- Improved Seal – O-ring sealing configuration to reduce vibrational effects and improve clamp load.
- Torque – Features a single, continuous duty torque rating.
- Constant Mesh – Economical workhorse features a cast iron housing.
- Clearance – Interference issues have been reduced with rotatable, cast iron flanges.
- Positive Stop – Driveline outputs; eliminates oil seal damage from coupling.
- Protection – Wet Spline Lubrication option provides 7 to 10 times greater shaft life.
- Speeds – Nine speed ratios including low and high speeds.
- Hose Included – No need to order separately.

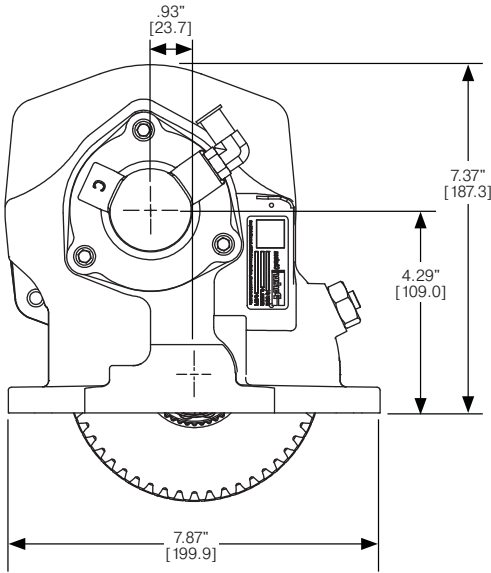
ENGINEERING YOUR SUCCESS.

288 SERIES POWER TAKE-OFF SPECIFICATIONS AND TECHNICAL DATA

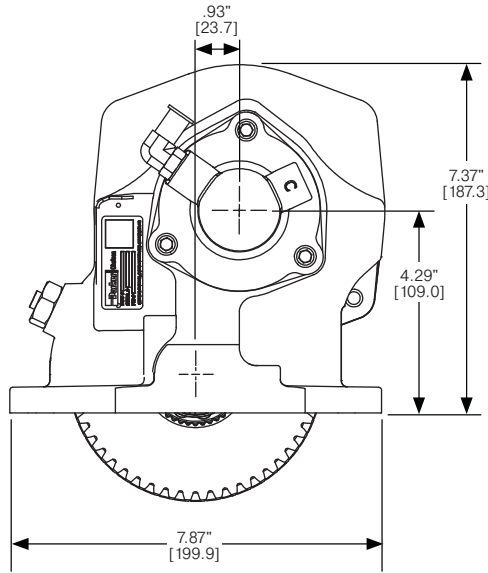
	2 8 8	G	B	F J	P	-	M	5	X V	
Basic Model										
288										
Mounting Option										
G = Standard 10-Bolt Mount w/ Metric Studs										
Gear Ratio										
3 & 5 Arr.										
B = 22/50										
C = 25/47										
D = 28/44										
G = 31/41										
K = 33/39										
M = 35/37										
P = 37/35										
S = 39/33										
T = 41/31										
8 Arr.										
B = 22/53										
C = 25/50										
D = 28/47										
G = 31/44										
M = 35/40										
P = 37/38										
S = 39/36										
T = 42/33										
Input Option										
FJ = Allison										
KV = Caterpillar										
NOTE: For more details, see Application Catalog (Transmission Model Number required)										
Lube Option										
Pressure										
P = Pressure Lube										
R = Valve Cap Rotated 120°										
S = Valve Cap Rotated 240°										
Wet Spline										
⁵ W = Wet Spline										
⁵ V = Valve Cap Rotated 120° w/ Wet Spline										
⁵ Y = Valve Cap Rotated 240° w/ Wet Spline										

288 SERIES POWER TAKE-OFF SPECIFICATIONS AND TECHNICAL DATA

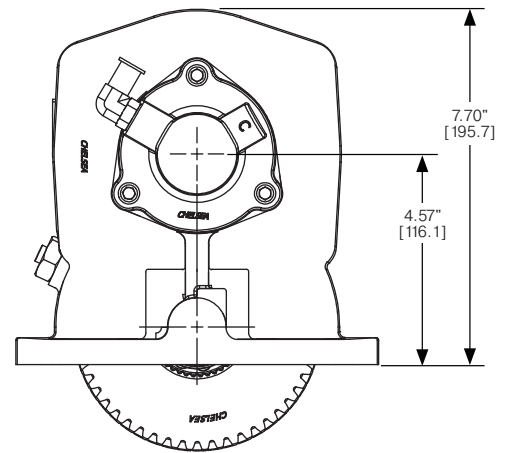
Dimensions – For PTO output information see application catalog



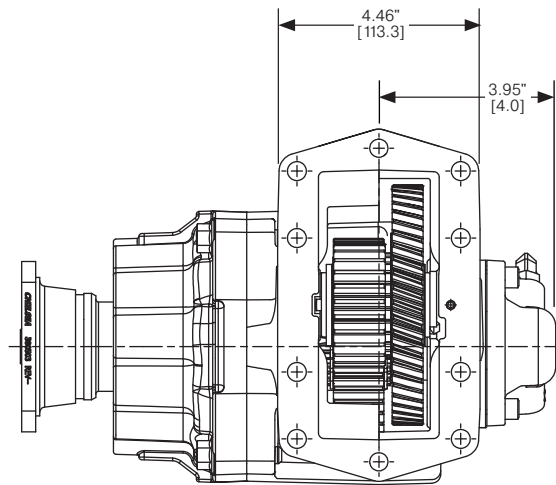
Assembly 3



Assembly 5



Assembly 8



Specifications Chart

Approximate Weight: 44 lbs. [20 kg]

	288*B	288*C	288*D	288*G	288*K	288*M	288*P	288*S	288*T
Continuous Torque Rating (lb-ft) [N-m]	300 [407]	390 [529]	390 [529]	360 [488]	340 [461]	318 [431]	290 [393]	265 [359]	240 [325]
HP Rating for Continuous Duty									
At 500 RPM of Output Shaft (HP) [kW]	29 [21]	37 [28]	37 [28]	34 [26]	32 [24]	30 [23]	28 [21]	25 [19]	23 [17]
At 1000 RPM of Output Shaft (HP) [kW]	57 [43]	74 [55]	74 [55]	69 [51]	65 [48]	61 [45]	55 [41]	50 [38]	46 [34]