

# Chelsea® 885 Series

## Heavy Duty 8-Bolt PowerShift PTO



### Overview:

The Chelsea 885 PTO is another example of why Chelsea PTO technology is the best in the business. This 8-Bolt PowerShift is a workhorse in the Chelsea PTO line. It features a cast iron housing and heavy duty ball bearings on the output shaft. The large clutch pack provides you with a torque rating up to 500 lbs-ft providing you with a long service life in heavy duty applications. Two output options, four internal speed ratios, five shift options and our Electric Overspeed Control (EOC) option make this one versatile PTO. Take advantage of over 65 years of Chelsea PTO technology to increase performance and lower costs.

- Oil Field Application
- Bulk Transporter Trucks
- Fire and Rescue



### Contact Information:

Parker Hannifin Corporation  
**Chelsea Products Division**  
8225 Hacks Cross Road  
Olive Branch, MS 38654 USA

**Phone: 1-888-PH4-TRUK**  
**(1-888-744-8785)**  
**Fax: 1-662-895-1069**  
**chelseacustserv@parker.com**

[www.parker.com/chelsea](http://www.parker.com/chelsea)

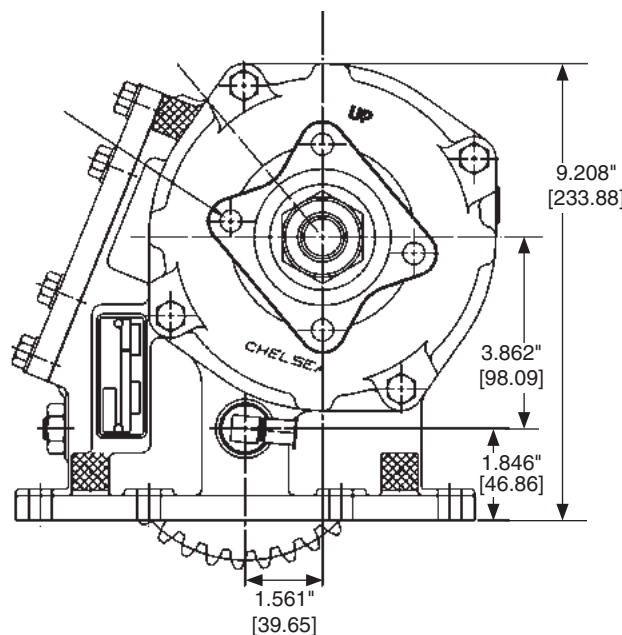
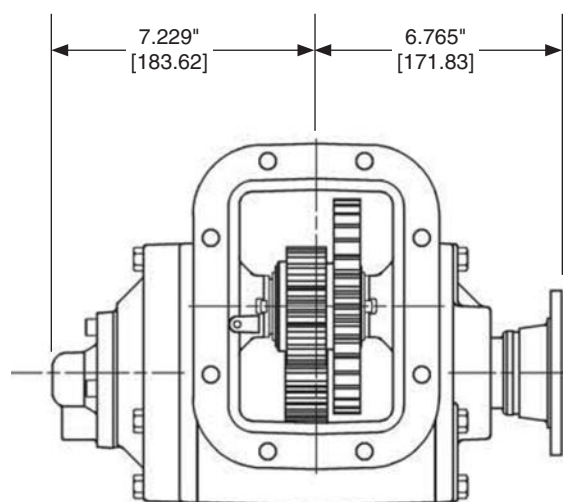
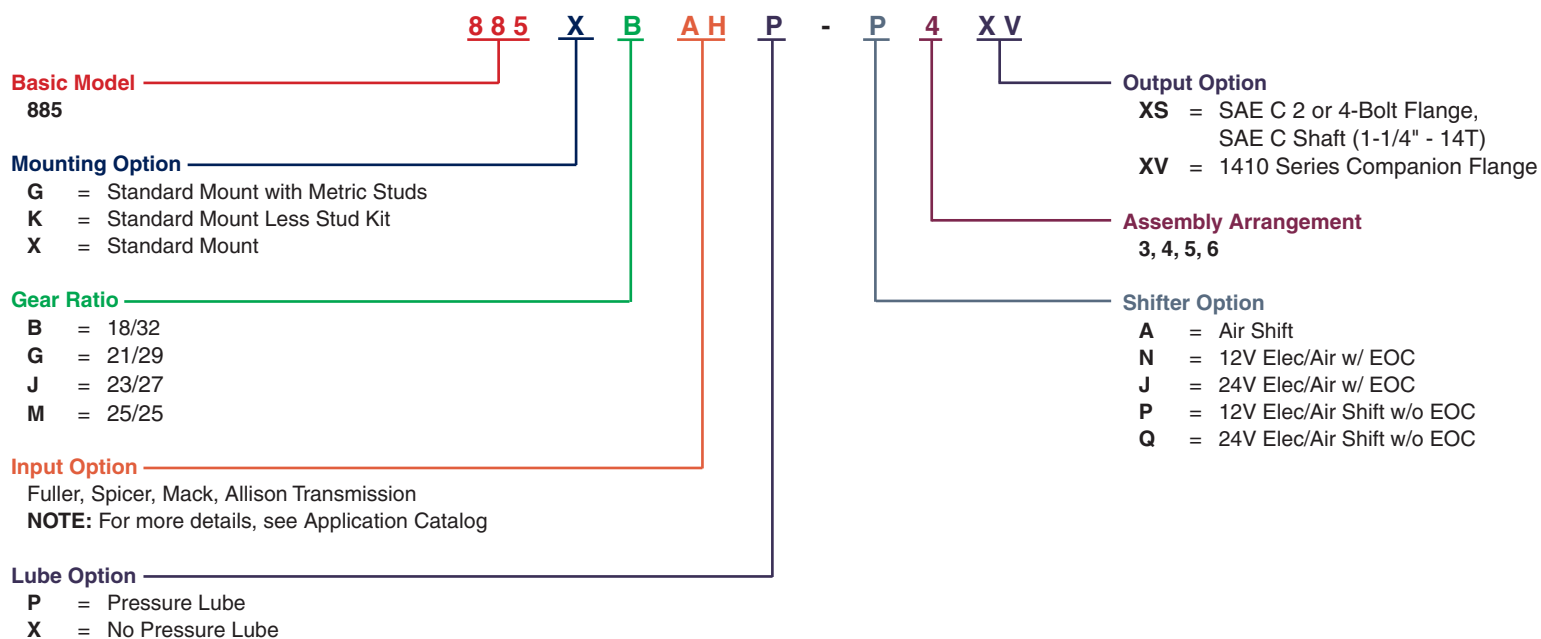
### Product Features and Benefits:

- **Power** - Designed for Heavy Duty applications such as pneumatic blowers.
- **Robust** - Rugged cast iron housing.
- **Speeds** - Four speed ratios available.
- **Protection** - Pressure lubrication standard.
- **Confidence** - Two Year Warranty.



ENGINEERING YOUR SUCCESS.

# 885 SERIES POWER TAKE-OFF SPECIFICATIONS AND TECHNICAL DATA



## Specifications Chart

Approximate Weight: 88 lbs. [40 kg]

	885*B, G, J, M
Intermittent & Continuous Torque Rating (lbs-ft) [Nm]	500 [678]
HP Rating for Intermittent & Continuous Service	
At 500 RPM of Output Shaft (HP) [Kw]	48 [36]
At 1000 RPM of Output Shaft (HP) [Kw]	95 [71]

© 2021 Parker Hannifin Corporation

Supersedes HY25-0119-B1/US August 2016 HY25-0119-B1/US April 2021



ENGINEERING YOUR SUCCESS.